

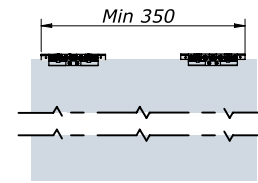
OXIDAL
your_project_partner

Sistemi
scorrevoli

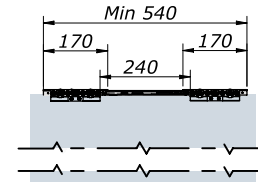
Sliding
systems

Sistema scorrevole SLIM
SLIM sliding system

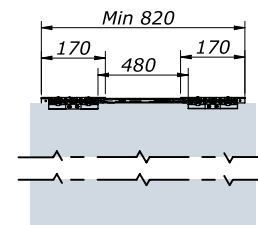




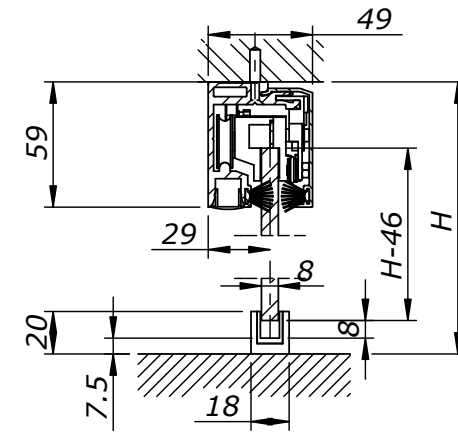
Larghezza minima anta senza ammortizzatore
Minimum door width without shock absorber



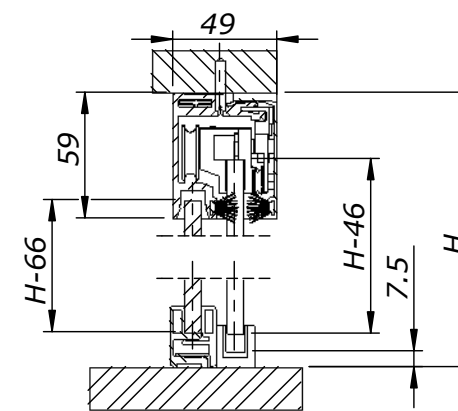
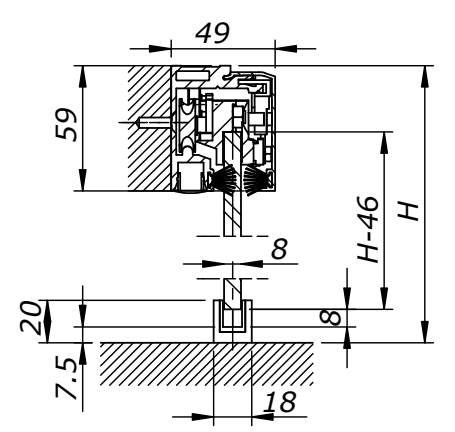
Larghezza minima con ammortizzatore singolo
Minimum door width with single shock absorber



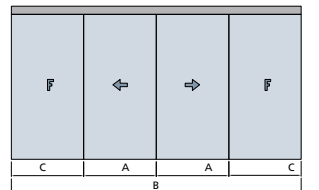
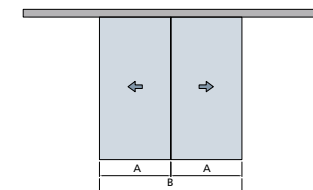
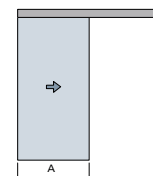
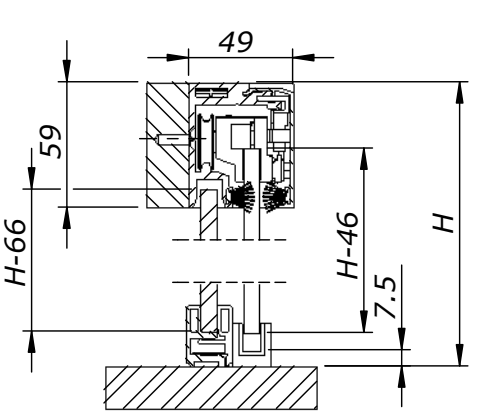
Larghezza minima con ammortizzatore doppio
Minimum door width with double shock absorber



Porta scorrevole singola con fissaggio a soffitto o parete
Single sliding door with top or lateral fixing



Porta scorrevole singola con fisso laterale fissaggio a soffitto o parete
Single sliding door with lateral fixed glass with top or lateral fixing



Sistema scorrevole SLIM

Binario di dimensioni compatte che agisce da guida scorrevole e da supporto per l'eventuale fisso laterale, il vetro è installato senza tacche. Sistema integrabile con ammortizzatore e apertura sincronizzata.

Caratteristiche principali

- Spessore vetro applicabile 8 mm
- Portata 60 kg
- Dimensioni massime anta mm 1000x2700

SLIM sliding system

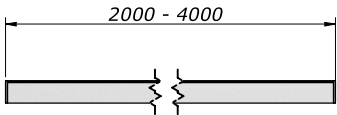
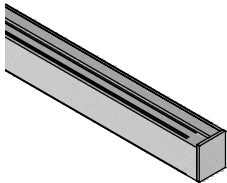
The guide has compact dimensions, the supporting profile hold sliding doors and fixed glass, glass is installed without notches. Shock absorber and synchronized opening can be inserted as optional.

Main features

- Glass thickness 8 mm
- Capacity 60 kg
- Maximum door dimensions mm 1000x2700

#1 Porta singola Single door	#2 Porta singola con fisso laterale Single door with fixed glass	#3 Porta doppia Double door	#4 Porta doppia con fisso laterale Double door with fixed glass
No. 01 Art. 500	No. 01 Art. 500	No. 01 Art. 500	No. 01 Art. 500
No. 01 Art. 501	No. 01 Art. 501	No. 02 Art. 501	No. 02 Art. 501
No. 01 Art. Maniglia/Pomolo	No. 01 Art. 520	No. 02 Art. Maniglia/Pomolo	No. 01 Art. 520
	No. 01 Art. Maniglia/Pomolo		No. 02 Art. Maniglia/Pomolo
optional Ammortizzatore / Shock absorber	optional Ammortizzatore / Shock absorber	optional Ammortizzatore / Shock absorber	optional Ammortizzatore / Shock absorber
Ammortizzatore singolo Single shock absorber No. 01 Art. 502	Ammortizzatore singolo Single shock absorber No. 1 Art. 502	Ammortizzatore singolo Single shock absorber No. 02 Art. 502	Ammortizzatore singolo Single shock absorber No. 02 Art. 502
Ammortizzatore doppio Double shock absorber No. 02 Art. 502	Ammortizzatore doppio Double shock absorber No. 02 Art. 502	Ammortizzatore doppio Double shock absorber No. 04 Art. 502	Ammortizzatore doppio Double shock absorber No. 04 Art. 502
		Apertura sincronizzata Synchronized opening No. 01 Art. 503	Apertura sincronizzata Synchronized opening No. 01 Art. 503

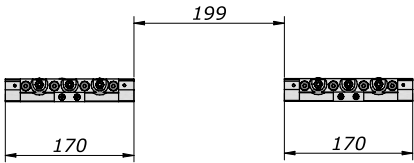
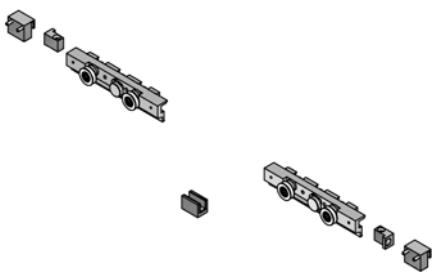
art. 500



Kit guida scorrevole incluso mantovana di copertura, spazzolino e tappi laterali
Sliding guide kit including brush profile, covers and lateral caps

lunghezza / length	argento / silver	cromato satinato / chrome mat
mm 2000	N-0500-A-200	N-0500-I-200
mm 2500	N-0500-A-250	N-0500-I-250
mm 3000	N-0500-A-300	N-0500-I-300
mm 4000	N-0500-A-400	N-0500-I-400

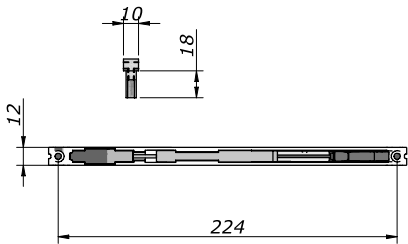
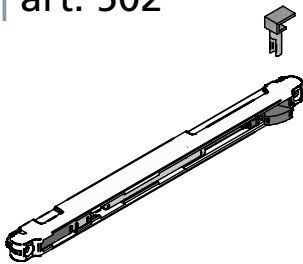
art. 501



Kit carrelli per anta scorrevole
Rollers set for sliding door

argento / silver
N-0501-A

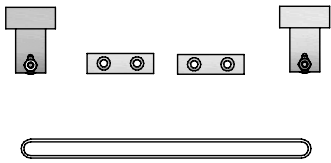
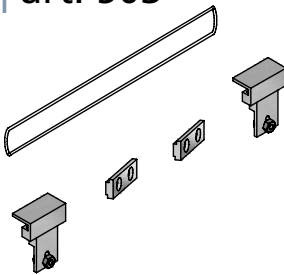
art. 502



Ammortizzatore
Soft closer

argento / silver
N-0502-A

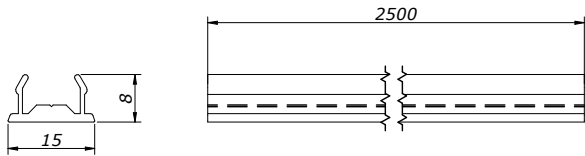
art. 503



Kit per chiusura sincronizzata
Synchronized closing kit

argento / silver
N-0503-A

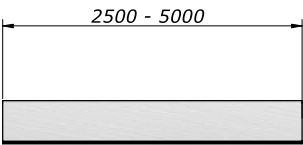
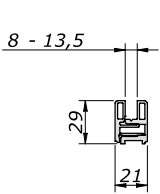
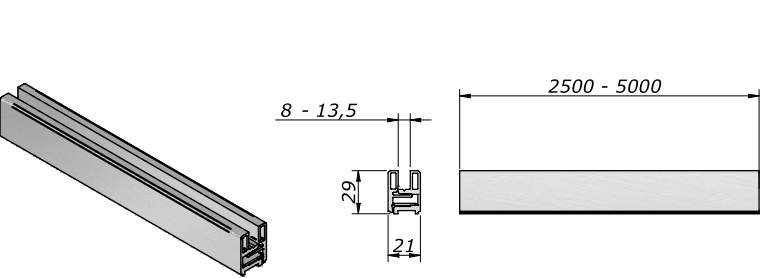
art. 504



Profilo di tamponamento inferiore
Bottom closing profile

argento / silver	cromato satinato / chrome mat
N-0504-A	N-0504-I

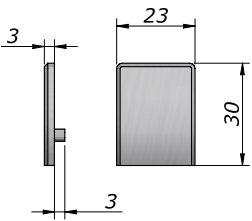
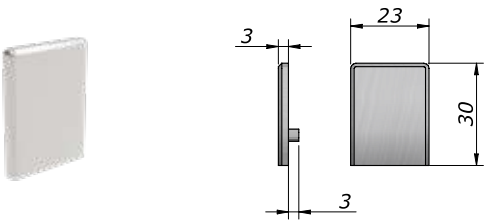
art. 520



Profilo a scatto per vetri fissi
Snap profile for fixed glass

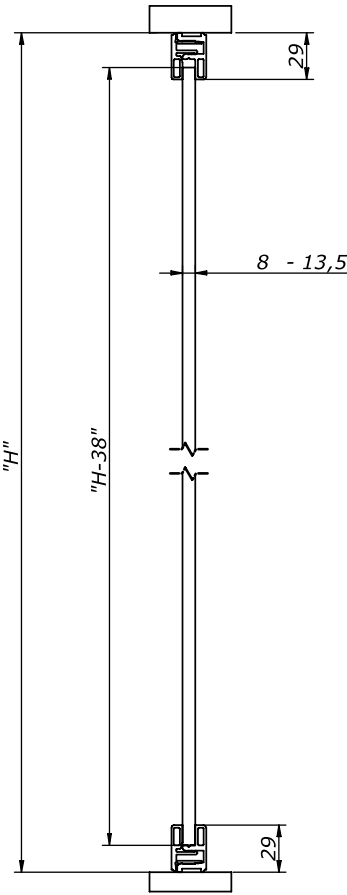
lunghezza / length	argento / silver	cromato satinato / chrome mat
mm 2500	N-0520-A-250	N-0520-I-250
mm 5000	N-0520-A-500	N-0520-I-500

art. 521



Tappo laterale per art. 520
Side cap for art. 520

argento / silver	cromato satinato / chrome mat
N-0521-A	N-0521-I





Sistema scorrevole standard

Standard sliding system



Sistema scorrevole standard

Sistema binari combinabili per qualsiasi tipo di installazione: porte singole o doppie, fissaggio a soffitto, laterale o a vetro.

Caratteristiche principali:

- Spessore vetro applicabile 8 a 12 mm
- Portata 130 kg/mt
- Dimensioni massime anta mm 1250x2700

Standard sliding systems

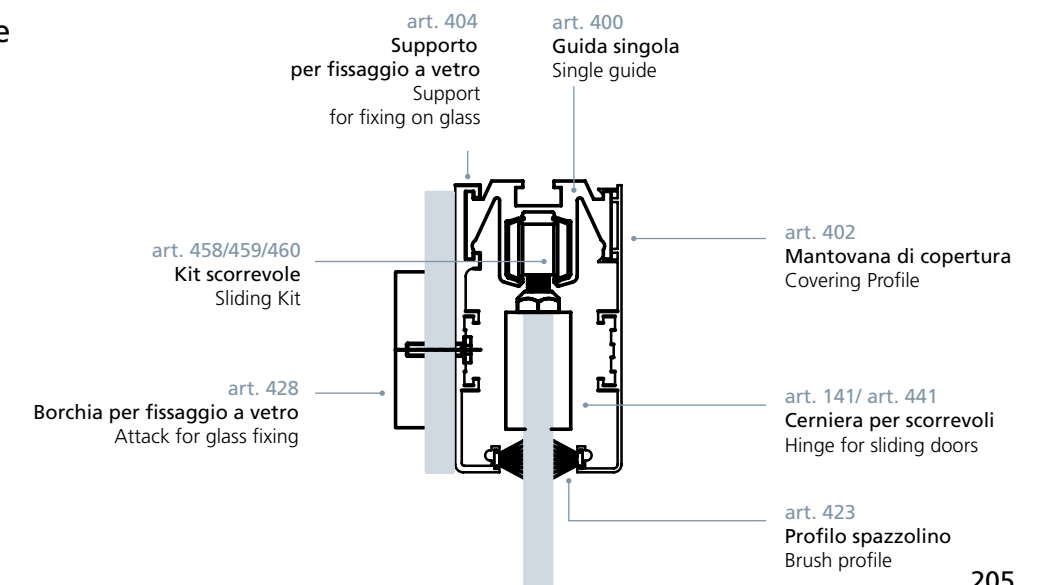
Profiles are combinable for any type of installation: single or double doors, top, side or glass mounting.

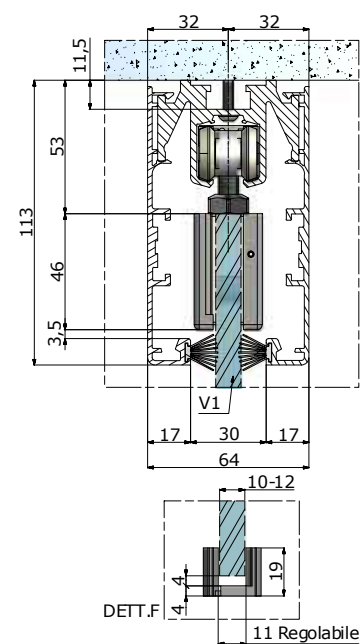
Main features:

- Glass thickness 8 to 12 mm
- Capacity 130 kg / mt
- Maximum door dimensions mm 1250x2700

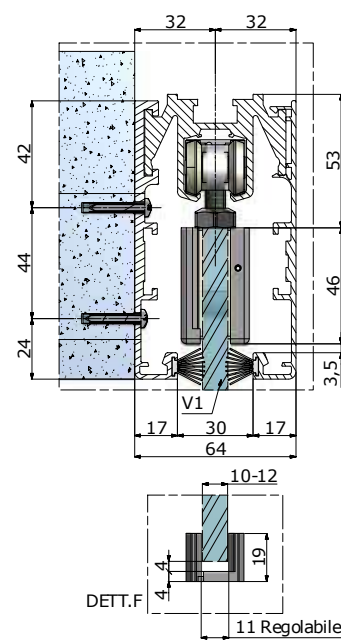
Esempi di composizione

Composition examples

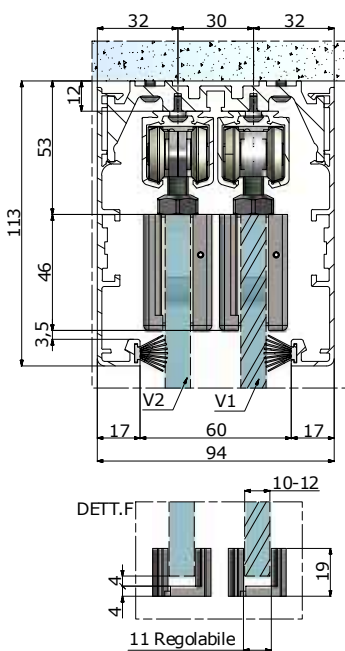




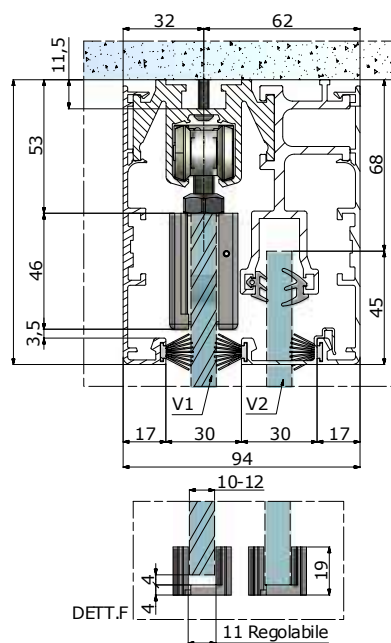
Scorrevole singolo
con fissaggio a soffitto
Single sliding door
with top fixing



Scorrevole singolo
con fissaggio a parete
Single sliding door
with wall fixing

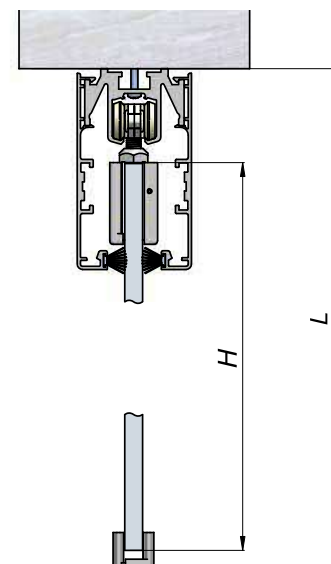


Scorrevole doppio
con fissaggio a soffitto
Double sliding door
with top fixing



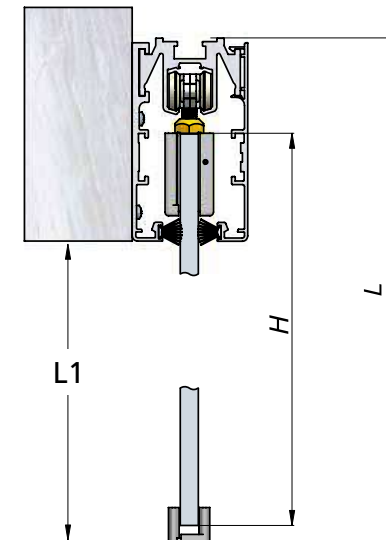
Scorrevole
con fissaggio a soffitto e fisso laterale
Sliding door
with top fixing and side fixed glass

H = Altezza porta / Door high
H1 = Altezza vetro fisso / Fixed glass high
L = Altezza vano da sopra guida / Room high dimension from sliding guide top
L1 = Altezza vano passaggio / Room high dimension



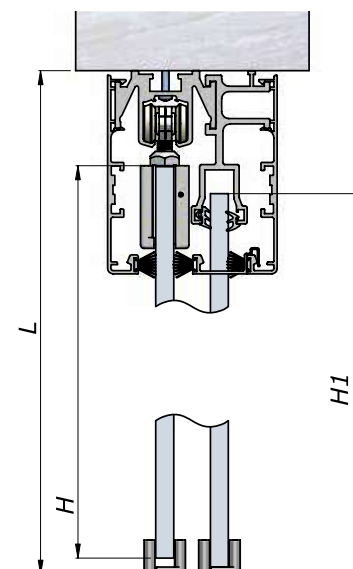
H = L - 65
Con art. 141 (cerniera con tacca)
With art. 141 (hinges with cut out)

H = L - 95
Con art. 441 (cerniera senza tacca)
With art. 441 (hinges without cut out)



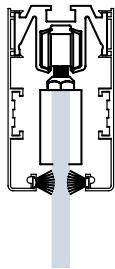
H = L1 + 113 - 65
Con art. 141 (cerniera con tacca)
With art. 141 (hinges with cut out)

H = L1 + 113 - 95
Con art. 441 (cerniera senza tacca)
With art. 441 (hinges without cut out)

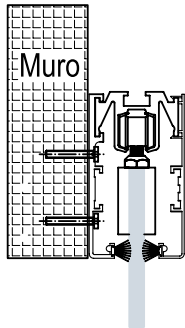


H1 = L - 65

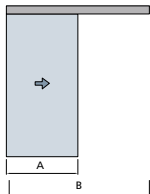
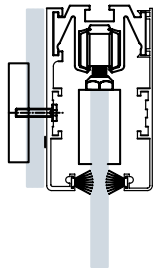
Fissaggio a soffitto
Top fastening



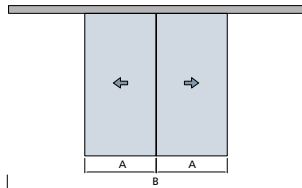
Fissaggio laterale
Lateral fastening



Fissaggio a vetro
Fastening on glass

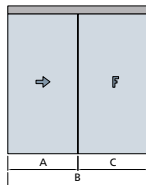
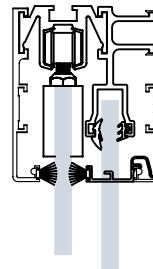


#1 Porta singola fissaggio a soffitto Single door top fastening	#2 Porta singola fissaggio a parete Single door lateral fastening	#3 Porta singola fissaggio a vetro Single door glass fastening
$B = A \times 2$	$B = A \times 2$	$B = A \times 2$
No. 01 Art. 400 lungh. / length = B	No. 01 Art. 400 lungh. / length = B	No. 01 Art. 400 lungh. / length = B
No. 02 Art. 402 lungh. / length = B	No. 01 Art. 402 lungh. / length = B	No. 01 Art. 402 lungh. / length = B
No. 02 Art. 410	No. 01 Art. 404 lungh. / length = B	No. 01 Art. 404 lungh. / length = B
No. 02 Art. 423 lungh. / length = B	No. 02 Art. 410	No. 02 Art. 410
No. 02 Art. 141 / 441	No. 02 Art. 423 lungh. / length = B	No. 02 Art. 423 lungh. / length = B
No. 01 Art. 460 / 458 / 459	No. 02 Art. 141 / 441	No. 03 Art. 428 q.tà ind. 1 ogni / ind. q.ty 1 every 400 mm
No. 01 Art. maniglia_pomolo/handles_knobs	No. 01 Art. 460 / 458 / 459	No. 02 Art. 141 / 441
	No. 01 Art. maniglia_pomolo/handles_knobs	No. 01 Art. 460 / 458 / 459
		No. 01 Art. maniglia_pomolo/handles_knobs



#4 Porta doppia fissaggio a soffitto Double door top fastening	#5 Porta doppia fissaggio a parete Double door lateral fastening	#6 Porta doppia fissaggio a vetro Double door glass fastening
$B = A \times 4$	$B = A \times 4$	$B = A \times 4$
No. 01 Art. 400 lungh. / length = B	No. 01 Art. 400 lungh. / length = B	No. 01 Art. 400 lungh. / length = B
No. 02 Art. 402 lungh. / length = B	No. 01 Art. 402 lungh. / length = B	No. 01 Art. 402 lungh. / length = B
No. 02 Art. 410	No. 01 Art. 404 lungh. / length = B	No. 01 Art. 404 lungh. / length = B
No. 02 Art. 423 lungh. / length = B	No. 02 Art. 410	No. 02 Art. 410
No. 04 Art. 141 / 441	No. 02 Art. 423 lungh. / length = B	No. 02 Art. 423 lungh. / length = B
No. 02 Art. 460 / 458 / 459	No. 04 Art. 141 / 441	No. 05 Art. 428 q.tà ind. 1 ogni / ind. q.ty 1 every 400 mm
No. 02 Art. maniglia_pomolo/handles_knobs	No. 02 Art. 460 / 458 / 459	No. 04 Art. 141 / 441
	No. 02 Art. maniglia_pomolo/handles_knobs	No. 02 Art. 460 / 458 / 459
		No. 02 Art. maniglia_pomolo/handles_knobs

Fissaggio a soffitto
Top fastening

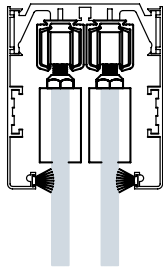


#7 Porta singola con fisso laterale fissaggio a soffitto Single door with fixed glass top fastening
$B = A + C$
No. 01 Art. 400 lungh. / length = B
No. 02 Art. 402 lungh. / length = B
No. 01 Art. 405 lungh. / length = B
No. 01 Art. 406 lungh. / length = A
No. 02 Art. 411
No. 01 Art. 420 lungh. / length = C x 2
No. 02 Art. 423 ungh. / length = B
No. 02 Art. 141 / 441
No. 01 Art. 460 / 458 / 459
No. 01 Art. Art. maniglia_pomolo/handles_knobs
No. 01 Art. 520

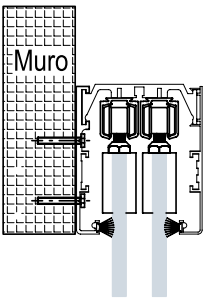


#8 Porta doppia con doppio fisso laterale fissaggio a soffitto Double door with double fixed glass top fastening
$B = A \times 2 + C \times 2$
No. 01 Art. 400 lungh. / length = B
No. 02 Art. 402 lungh. / length = B
No. 01 Art. 405 lungh. / length = B
No. 01 Art. 406 lungh. / length = A + A
No. 02 Art. 411
No. 01 Art. 420 lungh. / length = C x 4
No. 02 Art. 423 lungh. / length = B
No. 04 Art. 141 / 441
No. 02 Art. 460 / 458 / 459
No. 02 Art. maniglia_pomolo/handles_knobs
No. 01 Art. 520

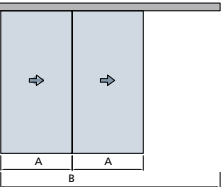
Fissaggio a soffitto
Top fastening



Fissaggio laterale
Lateral fastening

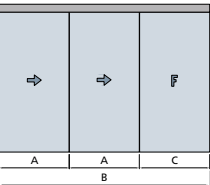
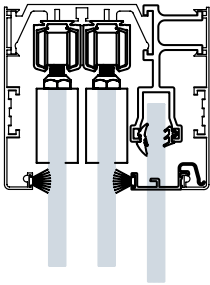


#9 Porta sopra con apertura sovrapposta fissaggio a soffitto Double door with overlapping opening and top fastening	#10 Porta sopra con apertura sovrapposta fissaggio laterale Double door with overlapping opening and lateral fastening
$B = A + A$	$B = A + A$
No. 01 Art. 401 lungh. / length = B	No. 01 Art. 401 lungh. / length = B
No. 02 Art. 461 lungh. / length = B	No. 02 Art. 461 lungh. / length = B
No. 02 Art. 402 lungh. / length = B	No. 01 Art. 402 lungh. / length = B
No. 02 Art. 411	No. 01 Art. 404 lungh. / length = B
No. 02 Art. 423 lungh. / length = B	No. 02 Art. 411
No. 04 Art. 141 / 441	No. 02 Art. 423 lungh. / length = B
No. 02 Art. 460 / 458 / 459	No. 04 Art. 141 / 441
No. 02 Art. maniglia_pomolo/handles_knobs	No. 02 Art. 460 / 458 / 459
	No. 02 Art. maniglia_pomolo/handles_knobs



#11 Porta doppia con apertura stesso lato fissaggio a soffitto Double door opening on same side top fastening	#12 Porta doppia con apertura stesso lato fissaggio laterale Double door opening on same side and lateral fastening
$B = A \times 3$	$B = A \times 3$
No. 01 Art. 401 lungh. / length = B	No. 01 Art. 401 lungh. / length = B
No. 02 Art. 461 lungh. / length = B	No. 02 Art. 461 lungh. / length = B
No. 02 Art. 402 lungh. / length = B	No. 01 Art. 402 lungh. / length = B
No. 02 Art. 411	No. 01 Art. 404 lungh. / length = B
No. 02 Art. 423 lungh. / length = B	No. 02 Art. 411
No. 04 Art. 141 / 441	No. 02 Art. 423 lungh. / length = B
No. 02 Art. 460 / 458 / 459	No. 04 Art. 141 / 441
No. 02 Art. maniglia_pomolo/handles_knobs	No. 02 Art. 460 / 458 / 459
	No. 02 Art. maniglia_pomolo/handles_knobs

Fissaggio a soffitto
Top fastening



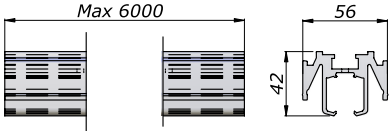
#13 Porta doppia con apertura stesso lato e fisso laterale fissaggio a soffitto Double door opening on same side with fixed glass top fastening
$B = A \times 2 + B$
No. 01 Art. 401 lungh. / length = B
No. 02 Art. 461 lungh. / length = B
No. 02 Art. 402 lungh. / length = B
No. 01 Art. 405 lungh. / length = B
No. 01 Art. 406 lungh. / length = B
No. 02 Art. 412
No. 01 Art. 420 lungh. / length = C X 2
No. 02 Art. 423 lungh. / length = B
No. 04 Art. 141 / 441
No. 02 Art. 460 / 458 / 459
No. 02 Art. maniglia_pomolo/handles_knobs

art. 400



Guida singola per scorrevole
Single sliding rail

argento / silver	
N-0400-A	



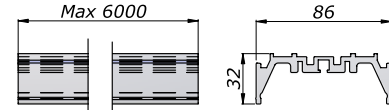
specificare lunghezza / specify length

art. 401



Porta guida doppio
Double rail holder

argento / silver	
N-0401-A	



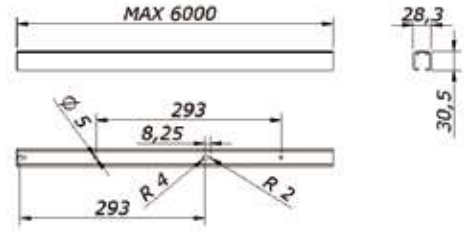
specificare lunghezza / specify length

art. 461



Guida singola per scorrevole
Single sliding rail

argento / silver	
N-0461-A	



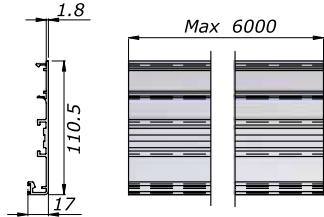
specificare lunghezza / specify length

art. 402



Mantovana di copertura
Covering profile

argento / silver	cromato satinato / chrome mat
N-0402-A	N-0402-I



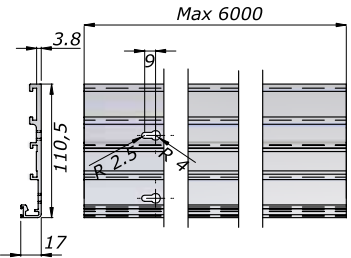
specificare lunghezza / specify length

art. 404



Porta guida per fissaggio a muro/vetro
Sliding rail holder for wall/glass fixing

argento / silver	cromato satinato / chrome mat
N-0404-A	N-0404-I



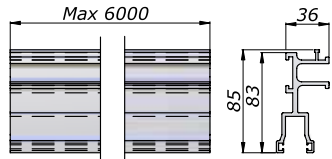
specificare lunghezza / specify length

art. 405



Profilo portavetro fisso
Fixed glass holder profile

argento / silver	
N-0405-A	



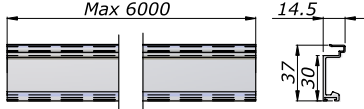
specificare lunghezza / specify length

art. 406



Profilo di tamponamento inferiore per Art. 405
Room closing profile for Art. 405

argento / silver	cromato satinato / chrome mat
N-0406-A	N-0406-I



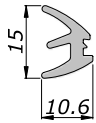
specificare lunghezza / specify length

art. 420



Guarnizione per art. 405
Rubber gasket for Art. 405

argento / silver	
N-0420-A	



specificare lunghezza / specify length

art. 423



Profilo spazzolino per Art. 402/404
Brush profile for Art. 402/404

argento/silver	
N-0423-A	

art. 410



Tappo laterale largh. 64,5 mm
End cap width 64,5 mm

argento / silver	cromato satinato / chrome mat
N-0410-A	N-0410-I

art. 411



Tappo laterale largh. 94,5 mm
End cap width 94,5 mm

argento / silver	cromato satinato / chrome mat
N-0411-A	N-0411-I

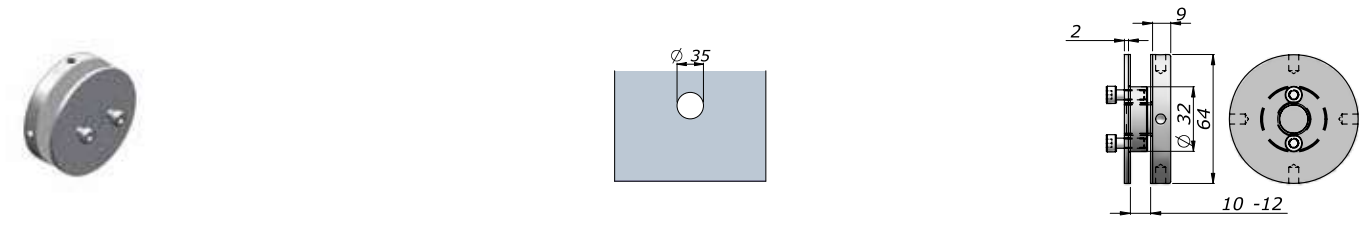
art. 412



Tappo laterale largh. 124,5 mm
End cap width 124,5 mm

argento / silver	cromato satinato / chrome mat
N-0412-A	N-0412-I

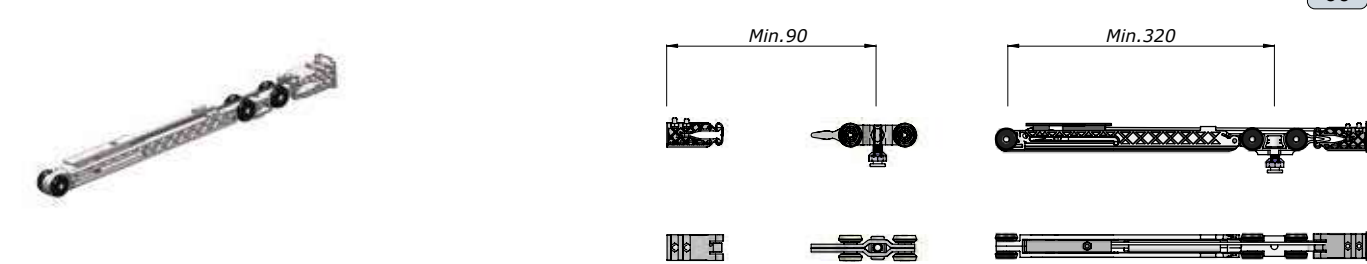
art. 428



Borchia per fissaggio a vetro
Glass point-fixing connection fitting

argento/silver	cromato satinato / chrome mat
N-0428-A	N-0428-I

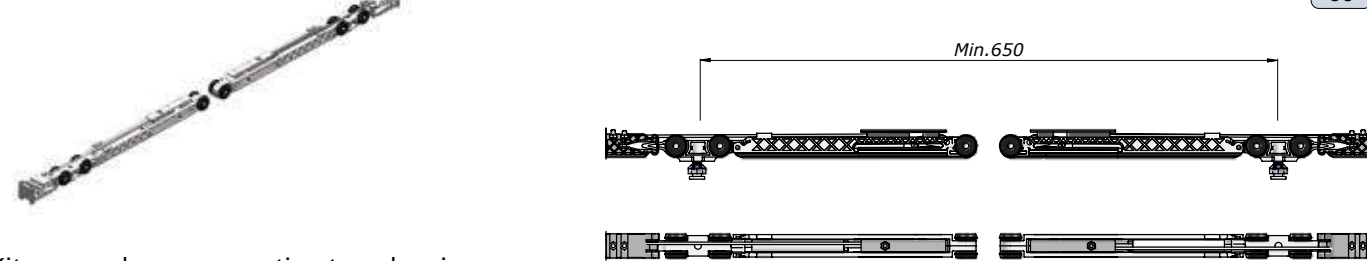
art. 458



Kit scorrevole con ammortizzatore singolo
Sliding kit with single shock absorber

argento/silver	
N-0458-A	

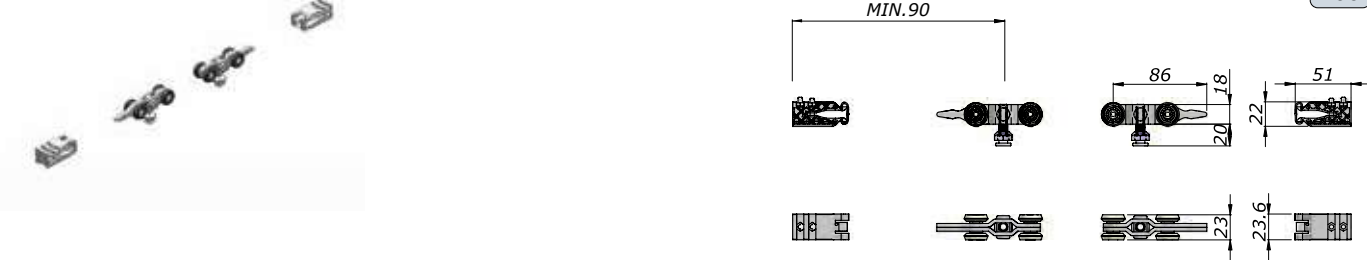
art. 459



Kit scorrevole con ammortizzatore doppio
Sliding kit with double shock absorber

argento/silver	
N-0459-A	

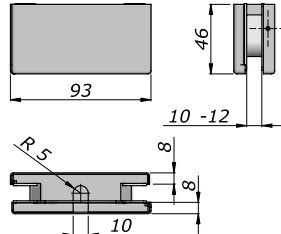
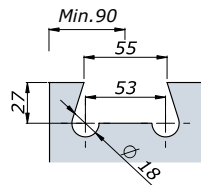
art. 460



Kit scorrevole standard
Standard sliding kit

argento/silver	
N-0460-A	

art. 141

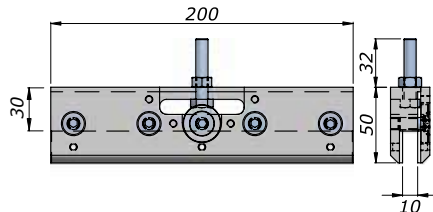


kg
100

Cerniera per porte scorrevoli
Sliding doors hinge

argento/silver	nero / black	cromato / chrome	crom. sat / chro. mat
N-0141-A	N-0141-N	N-0141-C	N-0141-I

art. 441

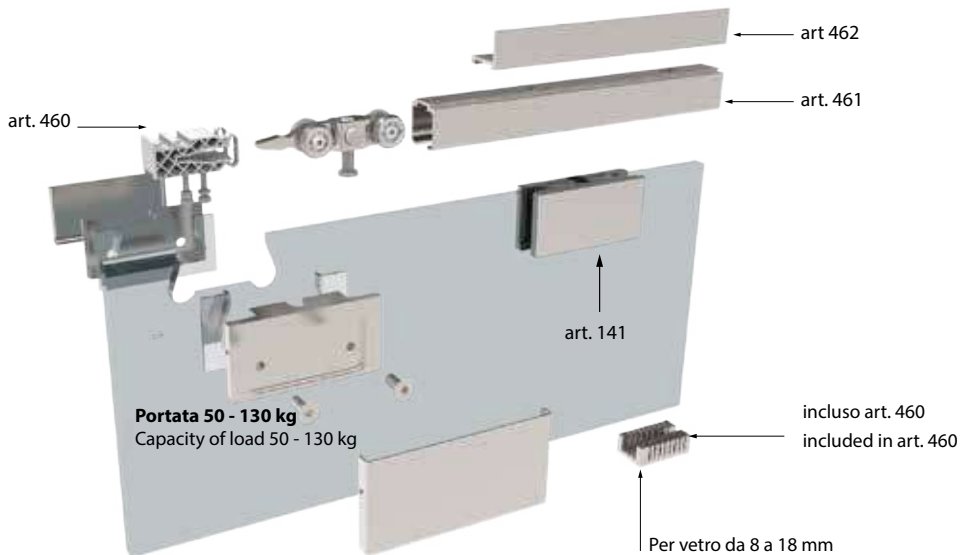


kg
30

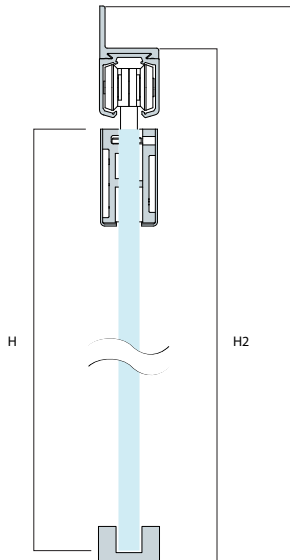
Cerniera per porte scorrevoli senza tacca
Sliding door hinge without cut-out

argento/silver
N-0441-A

Sistema scorrevole per vetri da 8 a 12 mm di spessore
Sliding system for 8 to 12 mm glass thickness



Dimensioni vetro
Glass dimensions

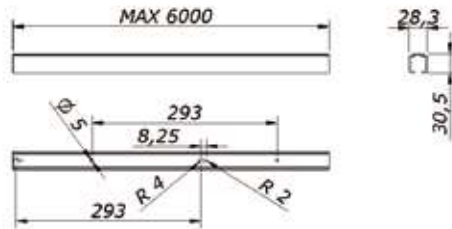


H = H2 - 55 mm
H = H1 - 68 mm

- art. 141 Cerniera per scorrevoli
art. 460 Kit scorrevole (include carrucole, fermi laterali, guida inferiore e accessori per montaggio di una porta singola)
art. 461 Guida scorrevole
art. 462 Portaguida per aggancio a parete

- art. 141 Sliding hinge
art. 460 Sliding Kit (including wheels, lateral stops, bottom guide and accessories for the assembling of a single door)
art. 461 Sliding guide
art. 462 Guide holder for wall attack

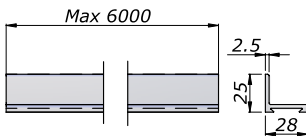
art. 461



Guida singola per scorrevole
Single sliding rail

argento/silver
N-0461-A

art. 462



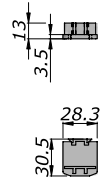
Porta guida per fissaggio a muro (non utilizzabile con art. 470)
Sliding rail holder for wall fixing (not suitable for art. 470)

argento/silver
N-0462-A

| art. 464

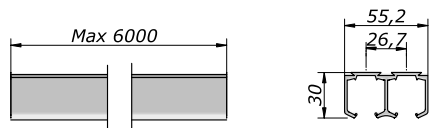


Tappo laterale per guida Art. 461
End cap to be used with Art. 461



argento / silver
N-0464-A

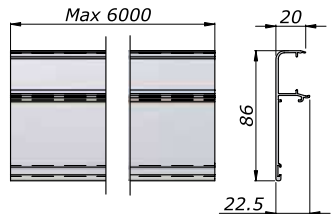
| art. 465



Guida doppia per scorrevoli
Double sliding rail

argento / silver
N-0465-A

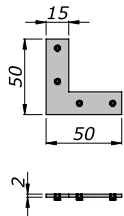
| art. 470



Mantovana di copertura
Covering profile

argento / silver
N-0470-A

| art. 471



Angolare di connessione per Art. 470
Angular connection for Art. 470

argento / silver
N-0471-A

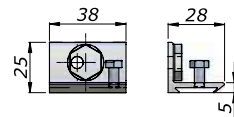
| art. 472



Guida inferiore per scorrevoli nichelato
Floor sliding guide nickel-plated

argento / silver
N-0472-A

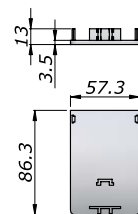
| art. 473



Angolare di fissaggio a muro per Art. 461 con Art. 470
Wall connection for Art. 461 with Art. 470

argento / silver
N-0473-A

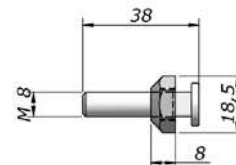
| art. 474



Tappo laterale per guida Art. 470
End cap to be use Art. 470

argento / silver
N-0474-A

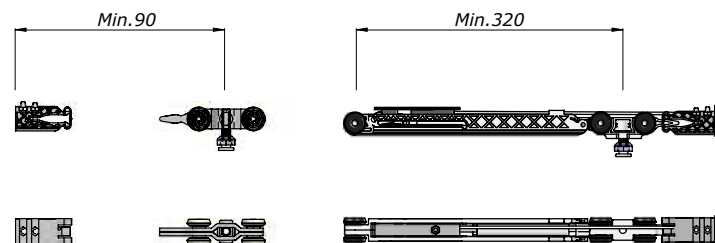
| art. 475



Vite e dado di ricambio per carrelli scrigno
Replacing screw and nut for "scigno" rollers

argento / silver
N-0475-A

art. 458



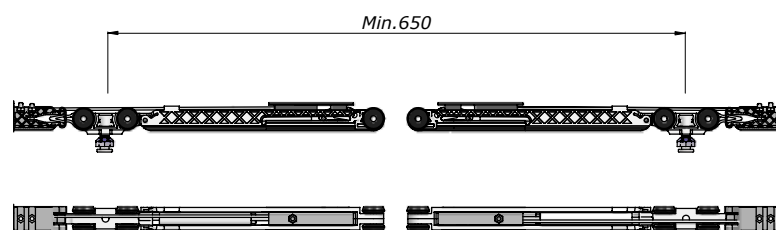
kg
60

Kit scorrevole con ammortizzatore singolo
Sliding kit with single shock absorber

argento / silver

N-0458-A

art. 459



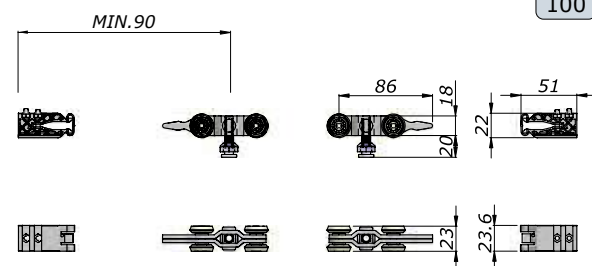
kg
60

Kit scorrevole con ammortizzatore doppio
Sliding kit with double shock absorber

argento / silver

N-0459-A

art. 460



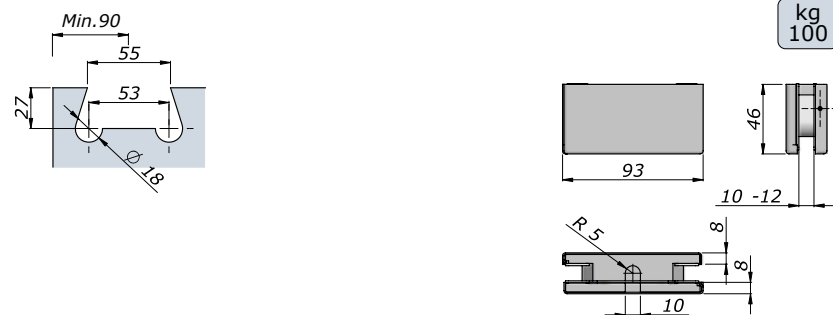
kg
100

Kit scorrevole standard
Standard sliding kit

argento / silver

N-0460-A

art. 141



kg
100

Cerniera per porte scorrevoli
Sliding doors hinge

argento / silver	nero / black	cromato / chrome	crom. sat / chro. mat
N-0141-A	N-0141-N	N-0141-C	N-0141-I

Maniglie, serrature e guarnizioni per scorrevoli Sliding handles, locks and gaskets



Sistema scorrevole per vetri da 6 mm di spessore
Sliding system for 6 mm glass thickness

- art. 466

Kit scorrevole
- art. 467

Guida singola
- art. 468

Guida doppia
- art. 469

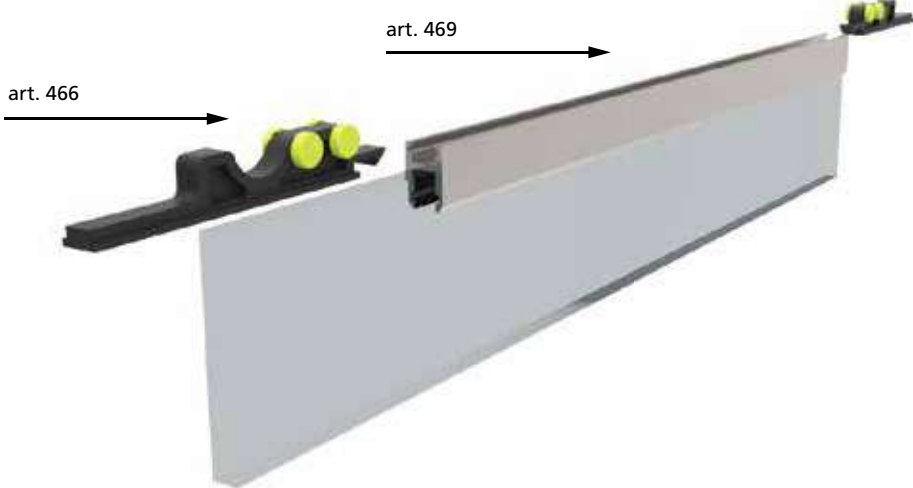
Guida portavetro
- art. 466

Sliding Kit
- art. 467

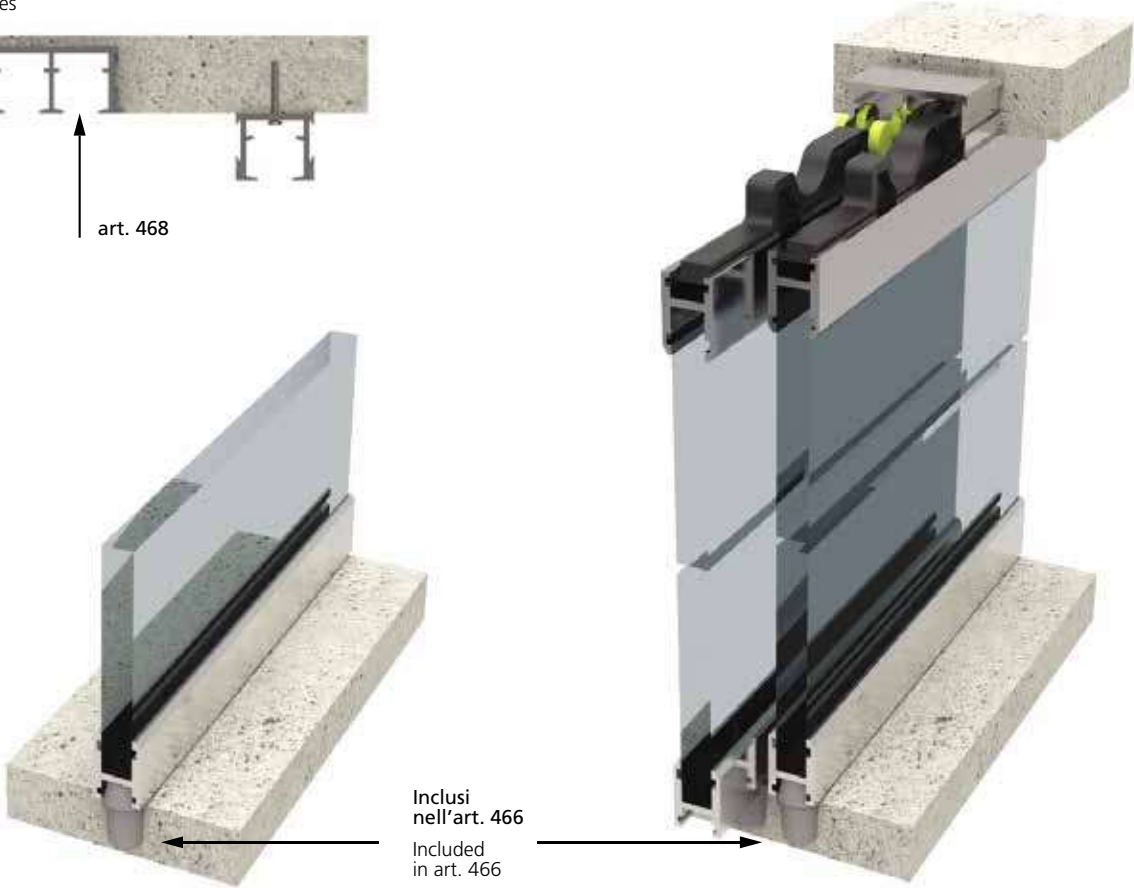
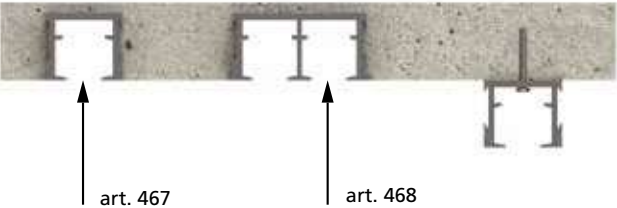
Single sliding guide
- art. 468

Double sliding guide
- art. 469

Glass holder guide



Possibili fissaggi superiori
Different top fixing possibilities



Possibili fissaggi inferiori
Different bottom fixing possibilities

Inclusi nell'art. 466
Included in art. 466

#1	#3
Porta singola Single door	Porta doppia Double door
No. 01 Art. 466	No. 02 Art. 466
No. 01 Art. 467 (L = misura anta x 2 / door width x 2)	No. 01 Art. 468 L = misura anta x 2 / door width x 2)
No. 01 Art. 469 (L = misura anta / door width)	No. 02 Art. 469 (L = misura anta / door width)
optional	optional
No. 01 Art. 469 (L = misura anta / door width)	No. 02 Art. 469 (L = misura anta / door width)

art. 466



Kit scorrevole per spessore max 6 mm
Sliding kit for glass max 6 mm

argento/silver
N-0466-A

art. 467



Guida scorrevole singola per 6 mm
Single sliding rail glass thickness max 6 mm

argento/silver
N-0467-A

art. 468



Guida scorrevole doppia per spess. max 6 mm
Double sliding rail glass thickness max 6 mm

argento/silver
N-0468-A

art. 469



Guida porta vetro per spessore max 6 mm
Glass holder guide glass thickness max 6 mm

argento/silver
N-0469-A

