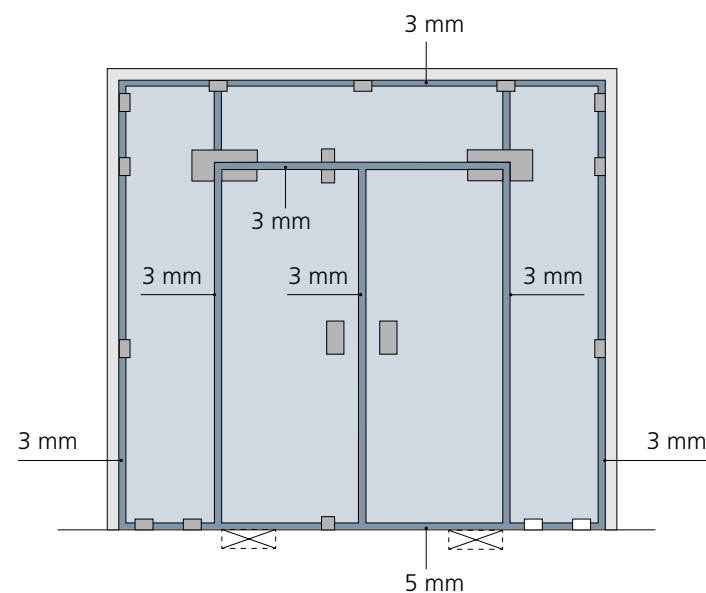




OXIDAL
your_project_partner

**Sistemi
porte in vetro**

Glass doors
systems



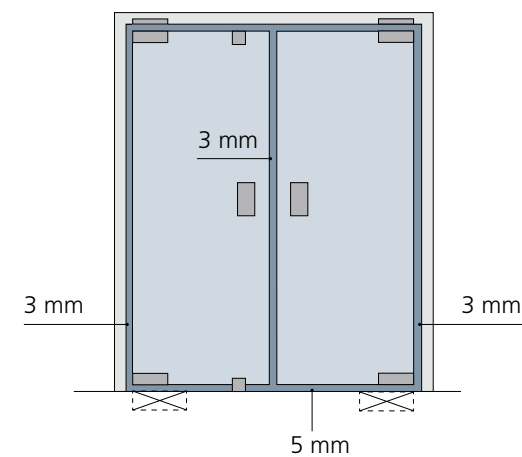
Per una corretta installazione:

- Verificare che lo spessore e il materiale di soffitti, pavimenti e strutture portanti siano adatti e sufficienti per l’inserimento e il fissaggio di chiudiporta e perni.
- Nel dimensionamento dei vetri va considerata una tolleranza tra vetro e vetro e tra vetro e muro variabile da 2 a 5 mm a seconda dello stato del vano, della precisione della lavorazione e della tipologia della struttura. Salvo dove richiesto, la somma degli spazi in altezza non deve superare i 12/15 mm (5 mm a pavimento + 3 mm a soffitto), si rischia altrimenti di non avere sufficiente regolazione e tenuta dei perni inferiori e superiori.
- Gli spessori devono essere opportunamente calcolati in base alle dimensioni delle lastre. Di seguito sono riportati gli spessori minimi consigliati per porte in vetro temperato.

For a correct installation:

- Carefully check thickness and material of ceiling, floor and bearing structures. They must be adapted and correspond with the floor spring and pins.
- While dimensioning the glass it must be consider a space between glass/glass and glass/wall. Such space can range from 2 to 5 mm according to the condition of the space, working precision and structure typology. Except where clearly indicated the total space in height cannot be over 12/15 mm (5 mm bottom + 3 mm ceiling). In case of different measures, bottom and top pins couldn’t be correctly adjusted and safely inserted.
- The glass thickness has to be suitably calculated according to the dimension of the glass sheets. Please find hereunder the minimum thickness suggested for tempered glass doors.

spessore thickness		altezza / height (mm)									
		1500	1600	1700	1800	1900	2000	2100	2200	2300	2500
larghezza / width	500	–	6	6	8	8	8	8	10	10	12
	600	–	6	6	8	8	8	10	10	12	12
	700	–	6	6	8	8	8	10	10	12	12
	800	–	6	8	8	8	10	10	12	12	12
	900	–	6	8	8	8	10	10	12	12	12
	1000	–	8	8	8	10	10	12	12	12	12
	1100	–	8	8	10	10	10	12	12	12	12
	1200	–	8	8	10	10	12	12	12	12	12
spessori validi per porte in vetro monolitico temperato / thickness right for monolithic tempered glass doors											



- I fori e le tacche devono essere realizzati con precisione e senza scheggiature o difetti dei bordi, eventuali difetti infatti possono causare problemi di rottura durante il processo di tempera. Tutte le imperfezioni devono essere riparate prima di tale fase.
- La distanza minima del bordo dei fori dal bordo del vetro è pari a due volte lo spessore del vetro.
- Tacche e fori hanno dimensioni maggiorate rispetto all’ingombro dell’accessorio per permettere un’ulteriore regolazione in fase di posa. Una volta posizionato l’accessorio, lo spazio rimanente tra accessorio e bordo-tacca-foro deve essere opportunamente riempito in modo da evitare qualsiasi movimento.
- Le guarnizioni in dotazione non necessitano alcun incollaggio, devono essere semplicemente posizionate tra lastra e piastra di fissaggio.
- È consigliato per i morsetti che non richiedono tacche l’utilizzo di lastre di medie dimensioni e comunque in strutture che vincolino il vetro impedendo lo scorrimento o la caduta quindi con il lato inferiore sempre in appoggio.

- Drills and cut outs have to be realized with precision and without chipping or defects on the edge, any defect can cause problems of breakage during the tempering process. All imperfections should be repaired prior to that stage.
- The minimum distance between the hole edge and the glass edge is twice the glass thickness.
- The cut outs and holes have dimension slightly larger than the accessories dimension, to allow further adjustments. Once the accessory is positioned the remaining space has to be filled up appropriately to avoid any movement.
- The gasket we supply doesn’t need to be glued, it has to be simply placed between glass and fixing plate.
- It’s recommended to use medium sides glass for clamps that don’t require any cut out. It’s advised to use them in structures that constrain the glass to prevent sliding or fall, so with the bottom side always supported.



Cerniere standard
Standard hinges



Porta doppia con sopra luce
Double door with over panel



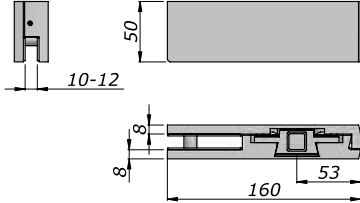
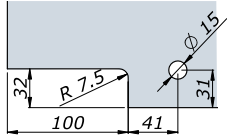
Porta doppia
con sopra luce e fisso laterale
Double door
with over panel and side fixed glass



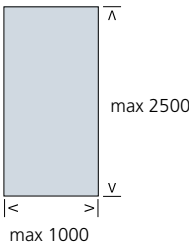
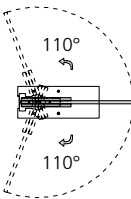
Porta doppia
con sopra luce e doppio fisso laterale
Double door
with over panel and double side fixed glass

#5	#6	#7
No. 02 Art. 101	No. 02 Art. 101	No. 02 Art. 101
No. 02 Art. 102	No. 02 Art. 102	No. 02 Art. 102
No. 02 Art. 103	No. 01 Art. 103	No. 02 Art. 104
No. 02 Art. 311/8000	No. 01 Art. 104	No. 02 Art. 311/8000
No. 02 Art. 304/305	No. 02 Art. 311/8000	No. 14 Art. 304/305
+ Serratura_Maniglia / Lock_handle	No. 08 Art. 304/305	+ Serratura_Maniglia / Lock_handle
	+ Serratura_Maniglia / Lock_handle	

art. 101



Esempi di composizione e consigli tecnici / Set composition examples and technical informations



Porta singola
Single door



Porta singola
con sopra luce
Single door
with over panel



Porta singola con sopra luce
e fisso laterale
Single door with over panel
and side fixed glass



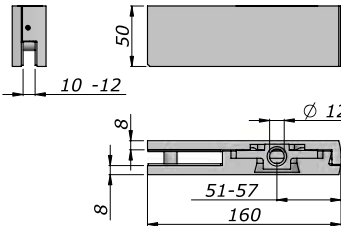
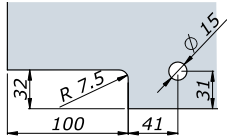
Porta doppia
Double door

portata / load	spessori/thickness	#1	#2	#3	#4
kg 100	8 -20	No. 01 Art. 101	No. 01 Art. 101	No. 01 Art. 101	No. 02 Art. 101
		No. 01 Art. 102	No. 01 Art. 102	No. 01 Art. 102	No. 02 Art. 102
		No. 01 Art. 301	No. 01 Art. 103	No. 01 Art. 104	No. 02 Art. 301
		No. 01 Art. 311/8000	No. 01 Art. 311/8000	No. 01 Art. 311/8000	No. 02 Art. 311/8000
		+ Serratura_Maniglia + Lock_handle	No. 01 Art. 330/331 No. 02 Art. 304/305	No. 01 Art. 330/331 No. 08 Art. 304/305	+ Serratura_Maniglia + Lock_handle
			+ Serratura_Maniglia + Lock_handle	+ Serratura_Maniglia + Lock_handle	

Cerniera inferiore
Bottom hinge

spessore/thickness	argento/silver	bronzo/bronze	oro/gold	nero/black	verniciato/powder	cromato/chrome	oro luc./bright gold	crom.sat/chro.mat
max 12 mm	N-0101-A	N-0101-B	N-0101-O	N-0101-N	N-0101-V	N-0101-C	N-0101-L	N-0101-I
max 14 mm	N-0101-A-14	-	-	-	-	N-0101-C-14	-	N-0101-I-14
max 18 mm	N-0101-A-18	-	-	-	-	N-0101-C-18	-	N-0101-I-18
max 21,52 mm	N-0101-A-20	-	-	-	-	N-0101-C-20	-	N-0101-I-20

art. 102



Cerniera superiore
Top hinge

spessore/thickness	argento/silver	bronzo/bronze	oro/gold	nero/black	verniciato/powder	cromato/chrome	oro luc./bright gold	crom.sat/chro.mat
max 12 mm	N-0102-A	N-0102-B	N-0102-O	N-0102-N	N-0102-V	N-0102-C	N-0102-L	N-0102-I
max 14 mm	N-0102-A-14	-	-	-	-	N-0102-C-14	-	N-0102-I-14
max 18 mm	N-0102-A-18	-	-	-	-	N-0102-C-18	-	N-0102-I-18
max 21,52 mm	N-0102-A-20	-	-	-	-	N-0102-C-20	-	N-0102-I-20

art. 301



Piastra superiore per Art. 102/109
Top pivot for Art. 102/109

argento/silver
N-0301-A

art. 311



Piletta a pavimento
Floor pivot

argento/silver
N-0311-A

art. 103



Attacco sopra luce con fissaggio a muro
Over panel patch fitting with wall fixing plate

spessore/thickness	argento/silver	bronzo/bronze	oro/gold	nero/black	verniciato/powder	cromato/chrome	oro luc./bright gold	crom.sat/chro.mat
max 12 mm	N-0103-A	N-0103-B	N-0103-O	N-0103-N	N-0103-V	N-0103-C	N-0103-L	N-0103-I
max 14 mm	N-0103-A-14	-	-	-	-	N-0103-C-14	-	N-0103-I-14
max 18 mm	N-0103-A-18	-	-	-	-	N-0103-C-18	-	N-0103-I-18
max 21,52 mm	N-0103-A-20	-	-	-	-	N-0103-C-20	-	N-0103-I-20

art. 104



Attacco sopra luce e fisso laterale
Side fixed panel and over panel patch

spessore/thickness	argento/silver	bronzo/bronze	oro/gold	nero/black	verniciato/powder	cromato/chrome	oro luc./bright gold	crom.sat/chro.mat
max 12 mm	N-0104-A	N-0104-B	N-0104-O	N-0104-N	N-0104-V	N-0104-C	N-0104-L	N-0104-I
max 14 mm	N-0104-A-14-DX	-	-	-	-	N-0104-C-14-DX	-	N-0104-I-14-DX
Dx / Sx	N-0104-A-14-SX	-	-	-	-	N-0104-C-14-SX	-	N-0104-I-14-SX
max 18 mm	N-0104-A-18-DX	-	-	-	-	N-0104-C-18-DX	-	N-0104-I-18-DX
Dx / Sx	N-0104-A-18-SX	-	-	-	-	N-0104-C-18-SX	-	N-0104-I-18-SX
max 21,52 mm	N-0104-A-20-DX	-	-	-	-	N-0104-C-20-DX	-	N-0104-I-20-DX
Dx / Sx	N-0104-A-20-SX	-	-	-	-	N-0104-C-20-SX	-	N-0104-I-20-SX

art. 104A



Attacco sopra luce e fisso con morsetto
Side fixed and over panel patch fitting with clamp

	argento/silver	cromato / chrome	crom. sat / chro. mat
destra/right	N-104A-A-DX	N-104A-C-DX	N-104A-I-DX
sinistra/left	N-104A-A-SX	N-104A-C-SX	N-104A-I-SX

art. 104B



Attacco sopra luce e fisso ad angolo
Corner side fixed and over panel patch fitting

	argento/silver	cromato / chrome	crom. sat / chro. mat
destra/right	N-104B-A-DX	N-104B-C-DX	N-104B-I-DX
sinistra/left	N-104B-A-SX	N-104B-C-SX	N-104B-I-SX

art. 150S



Cerniera superiore per porte ad arco
Arched doors top hinge

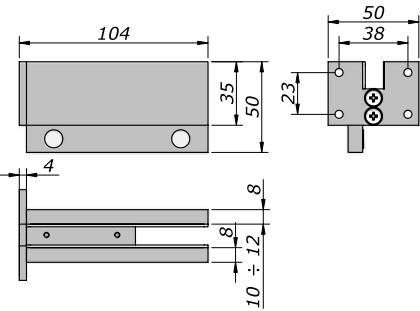
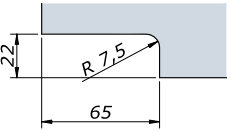
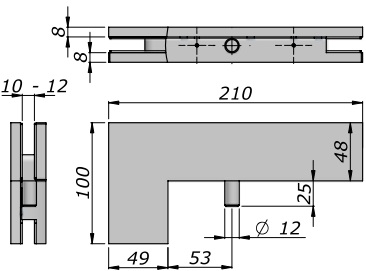
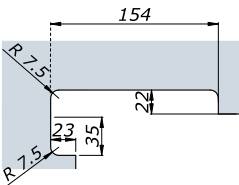
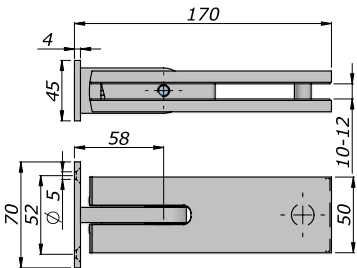
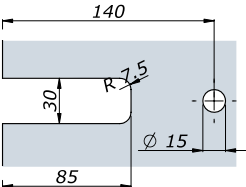
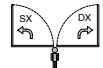
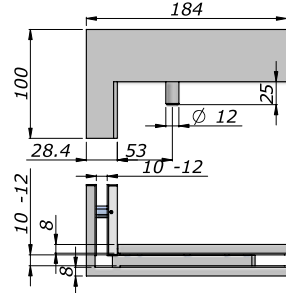
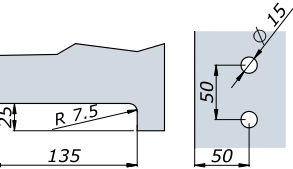
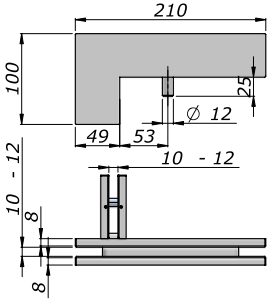
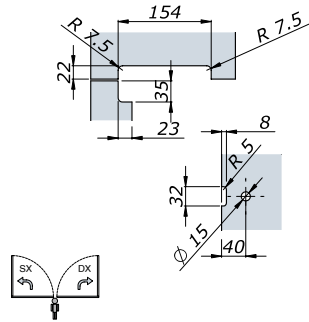
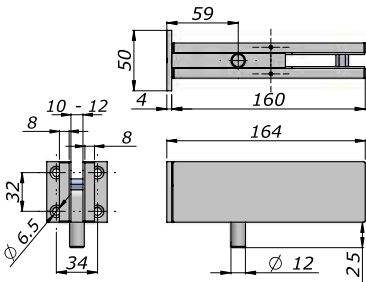
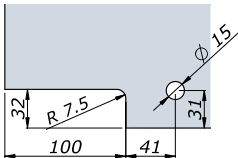
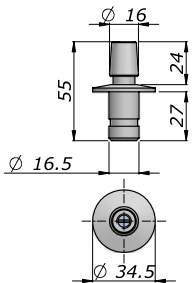
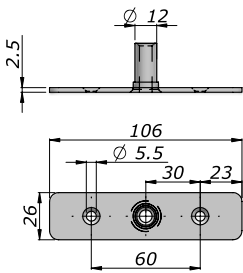
argento / silver	bronzo / bronze	oro / gold	nero / black	verniciato / powder	cromato / chrome	oro luc. / bright gold	crom. sat / chro. mat
N-150S-A	N-150S-B	N-150S-O	N-150S-N	N-150S-V	N-150S-C	N-150S-L	N-0150S-I

art. 330

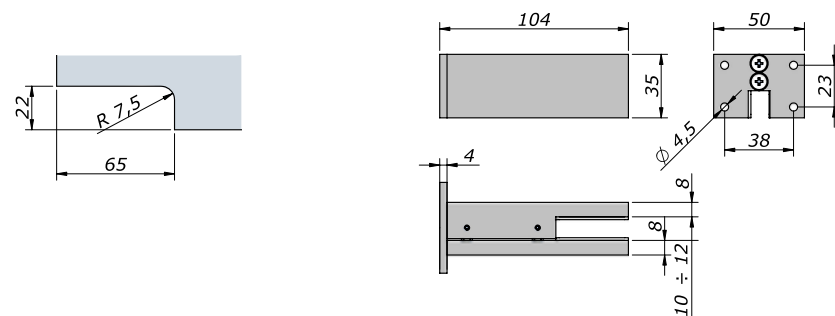


Reggisopraluce con battuta
Over panel patch fitting with stop

argento / silver	bronzo / bronze	oro / gold	nero / black	verniciato / powder	cromato / chrome	oro luc. / bright gold	crom. sat / chro. mat
N-0330-A	N-0330-B	N-0330-O	N-0330-N	N-0330-V	N-0330-C	N-0330-L	N-0330-I



art. 331



Reggisopraluce
Over panel patch fitting

argento/silver	bronzo / bronze	oro / gold	nero / black	verniciato / powder	cromato / chrome	oro luc. / bright gold	crom. sat / chro. mat
N-0331-A	N-0331-B	N-0331-O	N-0331-N	N-0331-V	N-0331-C	N-0331-L	N-0331-I

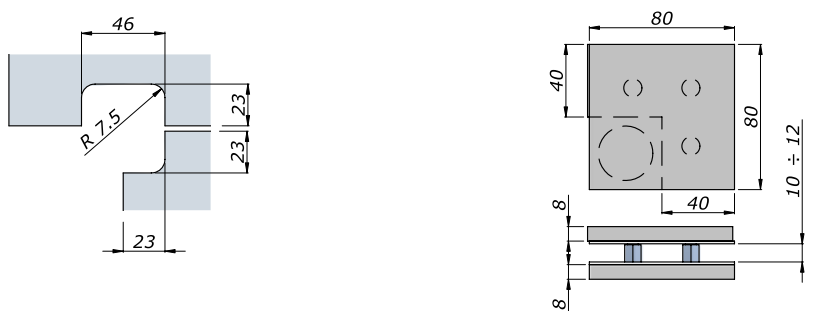
art. 340



Squadretta reggisopraluce
Small "L" shape connection

argento / silver	bronzo / bronze	oro / gold	nero / black	verniciato / powder	cromato / chrome	oro luc. / bright gold	crom. sat / chro. mat
N-0340-A	N-0340-B	N-0340-O	N-0340-N	N-0340-V	N-0340-C	N-0340-L	N-0340-I

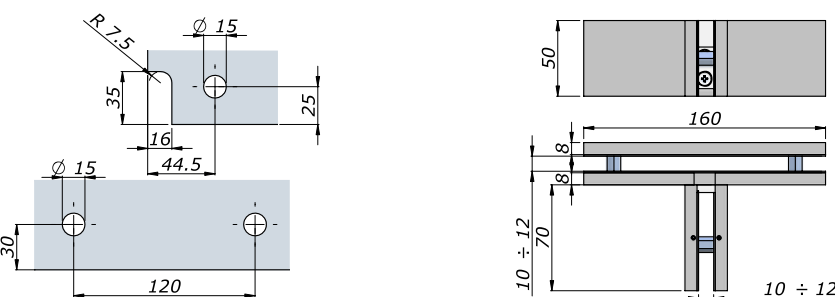
art. 341



Squadretta reggisopraluce con battuta
Small "L" shape connection with stop

argento / silver	bronzo / bronze	oro / gold	nero / black	verniciato / powder	cromato / chrome	oro luc. / bright gold	crom. sat / chro. mat
N-0341-A	N-0341-B	N-0341-O	N-0341-N	N-0341-V	N-0341-C	N-0341-L	N-0341-I

art. 340A



Reggisopraluce a tre vie
Over panel patch fitting with fin

argento / silver	bronzo / bronze	oro / gold	nero / black	verniciato / powder	cromato / chrome	oro luc. / bright gold	crom. sat / chro. mat
N-340A-A	N-340A-B	N-340A-O	N-340A-N	N-340A-V	N-340A-C	N-340A-L	N-340A-I

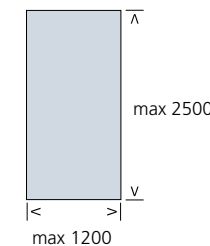
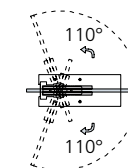
Cerniere decentrate Decentralized hinges

Esempi di composizione e consigli tecnici Set composition examples and technical informations



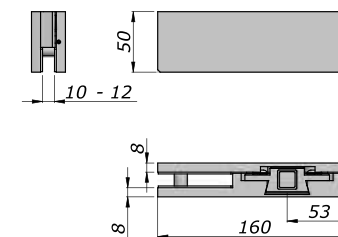
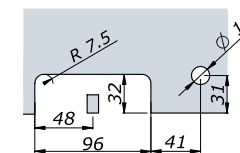
Porta singola
Single door

#1
No. 01 Art. 108
No. 01 Art. 109
No. 01 Art. 301
No. 01 Art. 311/8000
+ Serratura_Maniglia / Lock_handle



portata / load	spessori/thickness
kg 140	8 -12

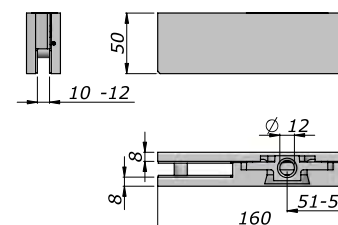
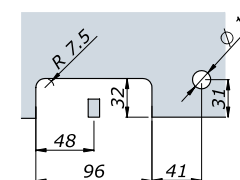
art. 108



Cerniera decentrata bassa
Decentralized bottom hinge

argento/silver	bronzo / bronze	oro / gold	nero / black	verniciato / powder	cromato / chrome	oro luc. / bright gold	crom. sat / chro. mat
N-0108-A	N-0108-B	N-0108-O	N-0108-N	N-0108-V	N-0108-C	N-0108-L	N-0108-I

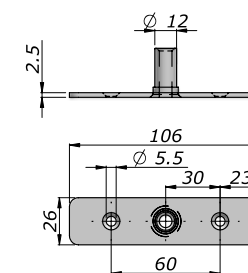
art. 109



Cerniera decentrata alta
Decentralized top hinge

argento/silver	bronzo / bronze	oro / gold	nero / black	verniciato / powder	cromato / chrome	oro luc. / bright gold	crom. sat / chro. mat
N-0109-A	N-0109-B	N-0109-O	N-0109-N	N-0109-V	N-0109-C	N-0109-L	N-0109-I

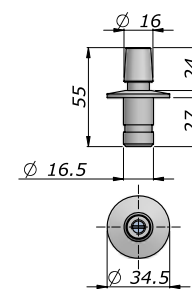
art. 301



Piastra superiore per Art. 102/109
Top pivot for Art. 102/109

argento/silver
N-0301-A

art. 311



Piletta a pavimento
Floor pivot

argento/silver
N-0311-A

Cerniere per alti spessori Hinges for high thicknesses

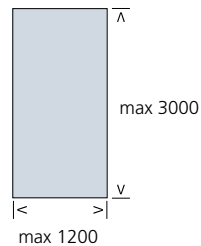
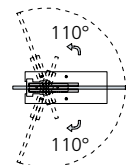
Esempi di composizione e consigli tecnici / Set composition examples and technical informations



Porta singola
Single door



Porta singola con sopraluce
Single door with over panel



#1	#2
No. 01 Art. 701	No. 01 Art. 701
No. 01 Art. 702	No. 01 Art. 702
No. 01 Art. 306	No. 01 Art. 703
No. 01 Art. 311/8000	No. 01 Art. 306
+ Serratura_Maniglia / Lock_handle	No. 01 Art. 311/8000
	+ Accessori tenuta sopraluce / Over panel fastening accessories
	+ Serratura_Maniglia / Lock_handle

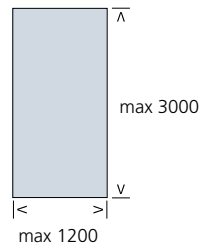
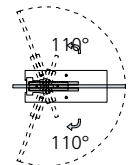
portata / load	spessori/thickness
kg 150	16 - 25



Porta singola
Single door



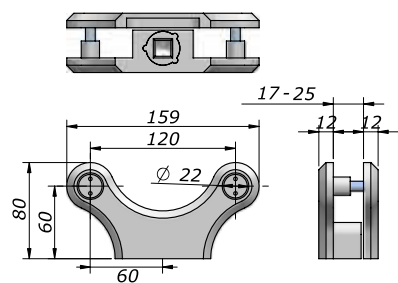
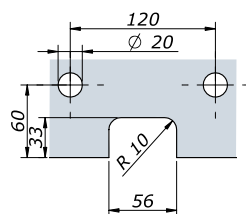
Porta singola con sopraluce
Single door with over panel



#3	#4
No. 01 Art. 721	No. 01 Art. 721
No. 01 Art. 722	No. 01 Art. 722
No. 01 Art. 307	No. 01 Art. 723
No. 01 Art. 311/8000	No. 01 Art. 307
+ Serratura_Maniglia / Lock_handle	No. 01 Art. 311/8000
	+ Serratura_Maniglia / Lock_handle

portata / load	spessori/thickness
kg 150	16 - 25

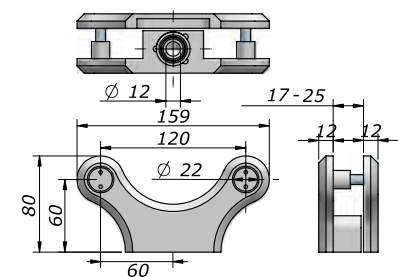
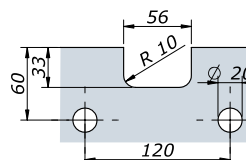
| art. 701



Cerniera bassa per spessori fino a 25 mm
Bottom hinge for thickness till 25 mm

argento/silver	bronzo / bronze	oro / gold	nero / black	verniciato / powder	cromato / chrome	oro luc. / bright gold	crom. sat / chro. mat
N-0701-A	N-0701-B	N-0701-O	N-0701-N	N-0701-V	N-0701-C	N-0701-L	N-0701-I

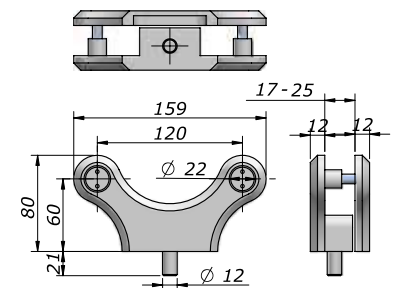
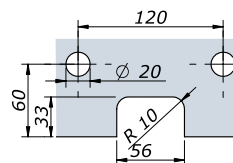
| art. 702



Cerniera alta per spessori fino a 25 mm
Top hinge for thickness till 25 mm

argento/silver	bronzo / bronze	oro / gold	nero / black	verniciato / powder	cromato / chrome	oro luc. / bright gold	crom. sat / chro. mat
N-0702-A	N-0702-B	N-0702-O	N-0702-N	N-0702-V	N-0702-C	N-0702-L	N-0702-I

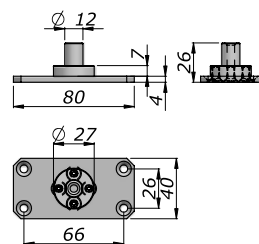
| art. 703



Attacco sopraluce per Art. 702
Over panel patch fitting for Art. 702

argento/silver	bronzo / bronze	oro / gold	nero / black	verniciato / powder	cromato / chrome	oro luc. / bright gold	crom. sat / chro. mat
N-0703-A	N-0703-B	N-0703-O	N-0703-N	N-0703-V	N-0703-C	N- 0703-L	N-0703-I

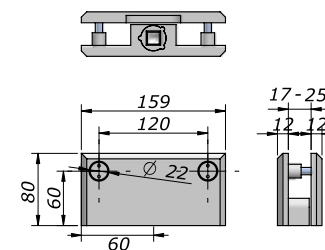
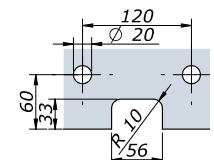
| art. 306



Piastra superiore per Art. 702
Top pivot for Art. 702

argento/silver
N-0306-A

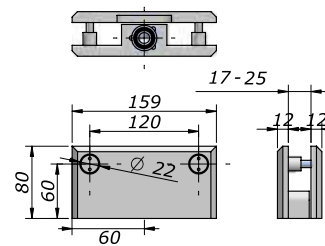
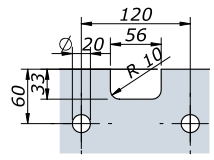
| art. 721



Cerniera bassa per spessori fino a 25 mm
Bottom hinge for thickness till 25 mm

argento/silver	bronzo / bronze	oro / gold	nero / black	verniciato / powder	cromato / chrome	oro luc. / bright gold	crom. sat / chro. mat
N-0721-A	N-0721-B	N-0721-O	N-0721-N	N-0721-V	N-0721-C	N-0721-L	N-0721-I

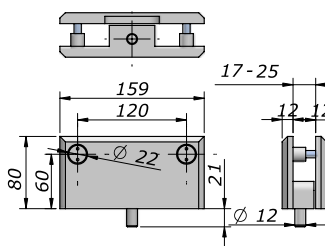
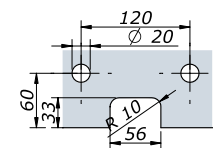
| art. 722



Cerniera alta per spessori fino a 25 mm
Top hinge for thickness till 25 mm

argento/silver	bronzo / bronze	oro / gold	nero / black	verniciato / powder	cromato / chrome	oro luc. / bright gold	crom. sat / chro. mat
N-0722-A	N-0722-B	N-0722-O	N-0722-N	N-0722-V	N-0722-C	N-0722-L	N-0722-I

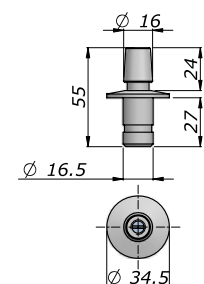
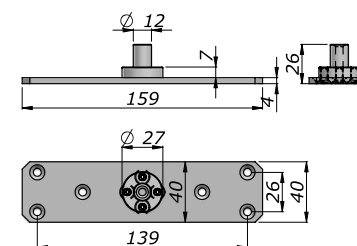
| art. 723



Attacco sopraluce per Art. 722
Over panel patch fitting for Art. 722

argento/silver	bronzo / bronze	oro / gold	nero / black	verniciato / powder	cromato / chrome	oro luc. / bright gold	crom. sat / chro. mat
N-0723-A	N-0723-B	N-0723-O	N-0723-N	N-0723-V	N-0723-C	N- 0723-L	N-0723-I

| art. 307



Piastra superiore per Art. 722
Top pivot for Art. 722

argento/silver
N-0307-A

| art. 311

Piletta a pavimento
Floor pivot

argento/silver
N-0311-A



Cerniere con borchie
Point fix hinges

Esempi di composizione e consigli tecnici / Set composition examples and technical informations

Porta singola
Single door

Porta singola con sopraluce
Single door with over panel

Porta singola con sopraluce e fisso laterale
Single door with over panel and side fixed glass

Porta doppia
Double door

max 2500
max 1000

#1	#2	#3	#4
No. 01 Art. 133/135	No. 01 Art. 133/135	No. 01 Art. 133/135	No. 02 Art. 133/135
No. 01 Art. 134/136	No. 01 Art. 134/136	No. 01 Art. 134/136	No. 02 Art. 134/136
No. 01 Art. 300	No. 01 Art. 129/130	No. 01 Art. 131/132	No. 02 Art. 300
No. 01 Art. 311/8000	No. 01 Art. 311/8000	No. 01 Art. 311/8000	No. 02 Art. 311/8000
+ Serratura_Maniglia + Lock_handle	No. 04 Art. 350/351 + Serratura_Maniglia + Lock_handle	No. 08 Art. 350/351 + Serratura_Maniglia + Lock_handle	+ Serratura_Maniglia + Lock_handle

portata / load	spessori/thickness
kg 100	8 -14



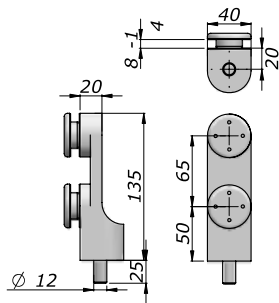
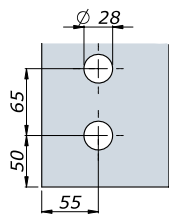
#5	#6	#7
No. 02 Art. 133/135	No. 02 Art. 133/135	No. 02 Art. 133/135
No. 02 Art. 134/136	No. 02 Art. 134/136	No. 02 Art. 134/136
No. 02 Art. 131/132	No. 01 Art. 129/130	No. 02 Art. 131/132
No. 02 Art. 311/8000	No. 01 Art. 131/132	No. 02 Art. 311/8000
No. 04 Art. 350/351	No. 02 Art. 311/8000	No. 14 Art. 350/351
+ Serratura_Maniglia / Lock_handle	No. 08 Art. 350/351 + Serratura_Maniglia / Lock_handle	+ Morsetti tenuta per fisso Clamp for fixed glass + Serratura_Maniglia / Lock_handle

art. 129

Attacco sopraluce per art. 134
Over panel patch fitting for art. 134

argento / silver	bronzo / bronze	oro / gold	nero / black	verniciato / powder	cromato / chrome	oro luc. / bright gold	crom. sat / chro. mat
N-0129-A	N-0129-B	N-0129-O	N-0129-N	N-0129-V	N-0129-C	N-0129-L	N-0129-I

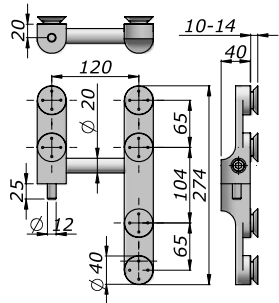
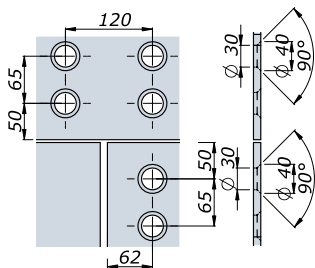
art. 130



Attacco sopra luce per art. 136
Over panel patch fitting for art. 136

argento/silver	bronzo / bronze	oro / gold	nero / black	verniciato / powder	cromato / chrome	oro luc. / bright gold	crom. sat / chro. mat
N-0130-A	N-0130-B	N-0130-O	N-0130-N	N-0130-V	N-0130-C	N-0130-L	N-0130-I

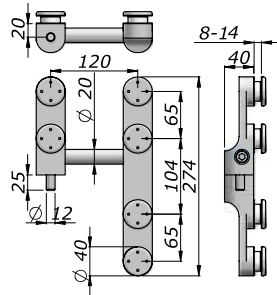
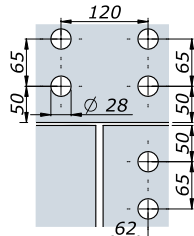
art. 131



Attacco sopra luce e fisso laterale per art. 134
Fixed and over panel patch fitting for art. 134

argento/silver	bronzo / bronze	oro / gold	nero / black	verniciato / powder	cromato / chrome	oro luc. / bright gold	crom. sat / chro. mat
N-0131-A	N-0131-B	N-0131-O	N-0131-N	N-0131-V	N-0131-C	N-0131-L	N-0131-I

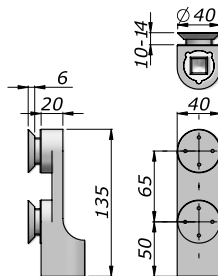
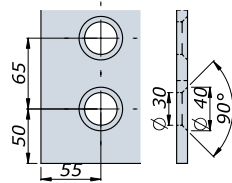
art. 132



Attacco sopra luce e fisso laterale per art. 136
Fixed and over panel patch fitting for art. 136

argento/silver	bronzo / bronze	oro / gold	nero / black	verniciato / powder	cromato / chrome	oro luc. / bright gold	crom. sat / chro. mat
N-0132-A	N-0132-B	N-0132-O	N-0132-N	N-0132-V	N-0132-C	N-0132-L	N-0132-I

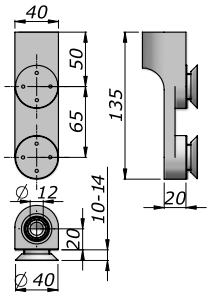
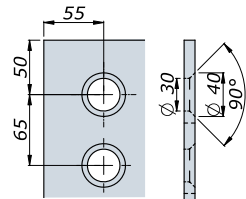
art. 133



Cerniera bassa con borchie svasate
Bottom hinge with countersunk bosses

argento / silver	bronzo / bronze	oro / gold	nero / black	verniciato / powder	cromato / chrome	oro luc. / bright gold	crom. sat / chro. mat
N-0133-A	N-0133-B	N-0133-O	N-0133-N	N-0133-V	N-0133-C	N- 0133-L	N-0133-I

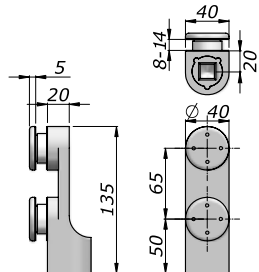
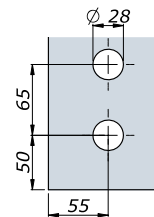
art. 134



Cerniera alta con borchie svasate
Top hinge with countersunk bosses

argento / silver	bronzo / bronze	oro / gold	nero / black	verniciato / powder	cromato / chrome	oro luc. / bright gold	crom. sat / chro. mat
N-0134-A	N-0134-B	N-0134-O	N-0134-N	N-0134-V	N-0134-C	N-0134-L	N-0134-I

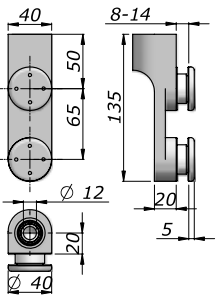
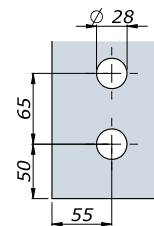
art. 135



Cerniera bassa con borchie piatte
Bottom hinge with flat bosses

argento / silver	bronzo / bronze	oro / gold	nero / black	verniciato / powder	cromato / chrome	oro luc. / bright gold	crom. sat / chro. mat
N-0135-A	N-0135-B	N-0135-O	N-0135-N	N-0135-V	N-0135-C	N- 0135-L	N-0135-I

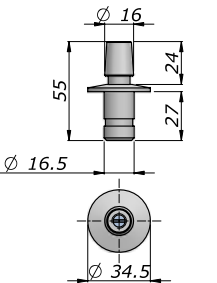
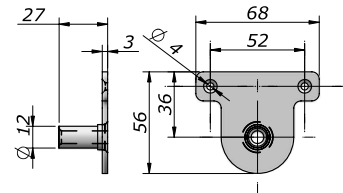
art. 136



Cerniera alta con borchie piatte
Top hinge with flat bosses

argento / silver	bronzo / bronze	oro / gold	nero / black	verniciato / powder	cromato / chrome	oro luc. / bright gold	crom. sat / chro. mat
N-0136-A	N-0136-B	N-0136-O	N-0136-N	N-0136-V	N-0136-C	N-0136-L	N-0136-I

art. 300



Piastra superiore per Art. 134/136
Top pivot for Art. 134/136

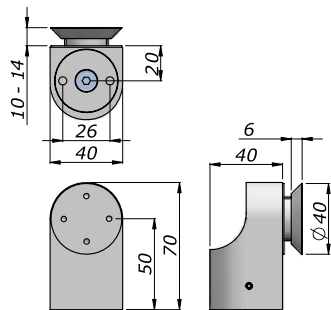
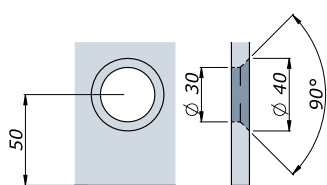
argento/silver
N-0300-A

art. 311

Piletta a pavimento
Floor pivot

argento/silver
N-0311-A

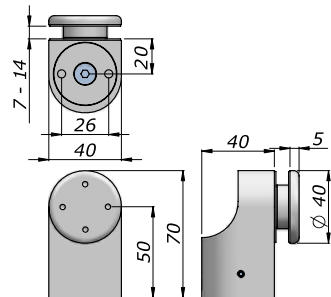
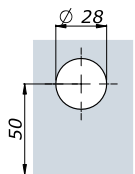
art. 350



Morsetto con borchia svasata
Point fixed clamp with countersunk boss

argento / silver	bronzo / bronze	oro / gold	nero / black	verniciato / powder	cromato / chrome	oro luc. / bright gold	crom. sat / chro. mat
N-0350-A	N-0350-B	N-0350-O	N-0350-N	N-0350-V	N-0350-C	N- 0350-L	N-0350-I

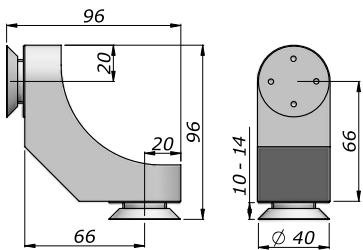
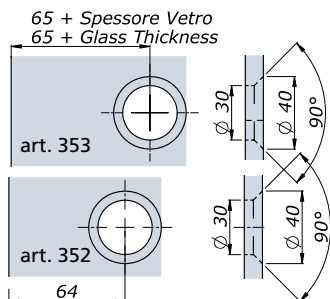
art. 351



Morsetto con borchia piatta
Point fixed clamp with flat boss

argento / silver	bronzo / bronze	oro / gold	nero / black	verniciato / powder	cromato / chrome	oro luc. / bright gold	crom. sat / chro. mat
N-0351-A	N-0351-B	N-0351-O	N-0351-N	N-0351-V	N-0351-C	N-0351-L	N-0351-I

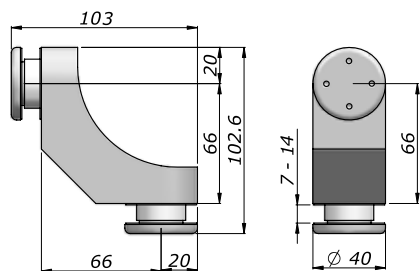
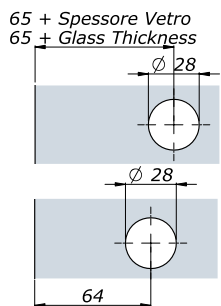
art. 352



Morsetto angolare con borchie svasate
Angular point fixed clamp with countersunk bosses

argento / silver	bronzo / bronze	oro / gold	nero / black	verniciato / powder	cromato / chrome	oro luc. / bright gold	crom. sat / chro. mat
N-0352-A	N-0352-B	N-0352-O	N-0352-N	N-0352-V	N-0352-C	N-0352-L	N-0352-I

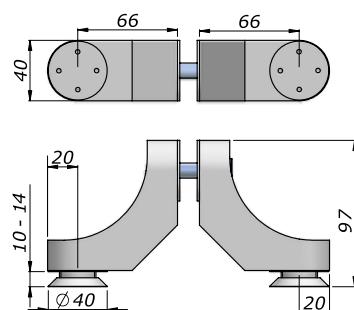
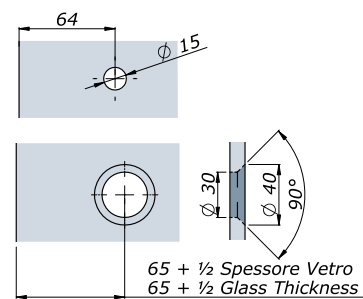
art. 353



Morsetto angolare con borchie piatte
Angular point fixed clamp with flat bosses

argento / silver	bronzo / bronze	oro / gold	nero / black	verniciato / powder	cromato / chrome	oro luc. / bright gold	crom. sat / chro. mat
N-0353-A	N-0353-B	N-0353-O	N-0353-N	N-0353-V	N-0353-C	N-0353-L	N-0353-I

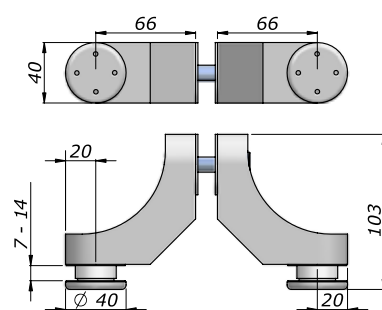
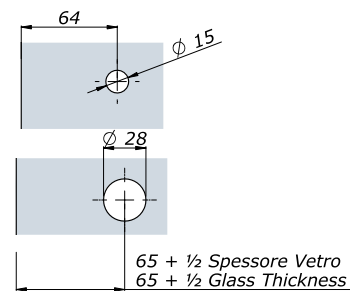
art. 354



Morsetto a tre vie con borchie svasate
Point fixed three ways clamp countersunk bosses

argento / silver	bronzo / bronze	oro / gold	nero / black	verniciato / powder	cromato / chrome	oro luc. / bright gold	crom. sat / chro. mat
N-0354-A	N-0354-B	N-0354-O	N-0354-N	N-0354-V	N-0354-C	N- 0354-L	N-0354-I

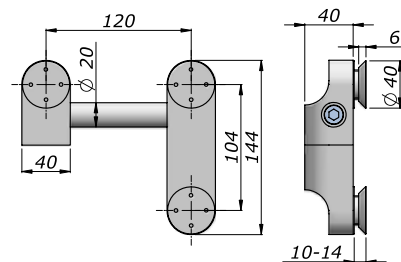
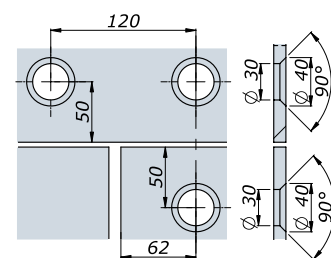
art. 355



Morsetto a tre vie con borchie piatte
Point fixed three ways clamp flat bosses

argento / silver	bronzo / bronze	oro / gold	nero / black	verniciato / powder	cromato / chrome	oro luc. / bright gold	crom. sat / chro. mat
N-0355-A	N-0355-B	N-0355-O	N-0355-N	N-0355-V	N-0355-C	N-0355-L	N-0355-I

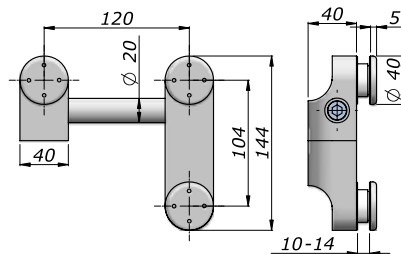
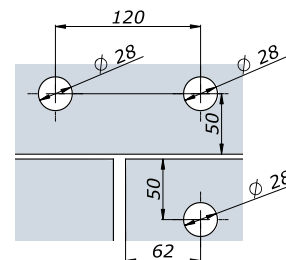
art. 356



Attacco sopraluce e fisso laterale con borchie svasate
Side fixed and over panel patch fitting with countersunk bosses

argento / silver	bronzo / bronze	oro / gold	nero / black	verniciato / powder	cromato / chrome	oro luc. / bright gold	crom. sat / chro. mat
N-0356-A	N-0356-B	N-0356-O	N-0356-N	N-0356-V	N-0356-C	N-0356-L	N-0356-I

art. 357



Attacco sopraluce e fisso laterale con borchie piatte
Side fixed and over panel patch fitting with flat bosses

argento / silver	bronzo / bronze	oro / gold	nero / black	verniciato / powder	cromato / chrome	oro luc. / bright gold	crom. sat / chro. mat
N-0357-A	N-0357-B	N-0357-O	N-0357-N	N-0357-V	N-0357-C	N-0357-L	N-0357-I

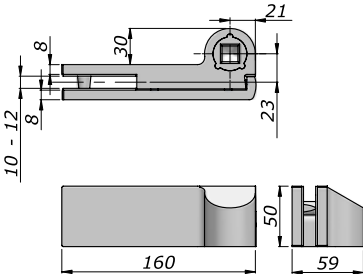
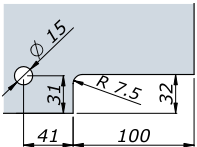
Cerniere sfalsate Offset hinges



Esempi di composizione e consigli tecnici / Set composition examples and technical informations

			
Porta singola Single door	Porta singola con sopra luce Single door with over panel	Porta doppia con sopra luce Double door with over panel	
#1	#2	#3	portata / load spessori/thickness
No. 01 Art. 105 dx/sx	No. 01 Art. 105 dx/sx	No. 02 Art. 105 (1dx+1sx)	kg 120 8 -12
No. 01 Art. 106 dx/sx	No. 01 Art. 106 dx/sx	No. 02 Art. 106 (1dx+1sx)	
No. 01 Art. 302 dx/sx	No. 01 Art. 107 dx/sx	No. 02 Art. 107 (1dx+1sx)	
No. 01 Art. 311/8000	No. 01 Art. 311/8000	No. 02 Art. 311/8000	
+ Serratura_Maniglia +Lock_handle	No. 01 Art. 330/331 No. 02 Art. 304/305 + Serratura_Maniglia +Lock_handle	No. 02 Art. 304/305 + Serratura_Maniglia +Lock_handle	

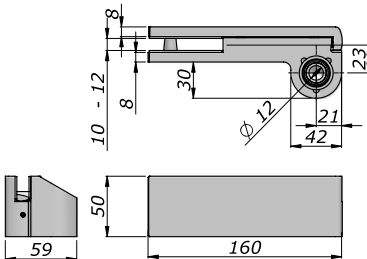
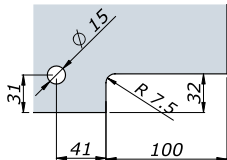
art. 105



Cerniera sfalsata bassa
Offset bottom hinge

	argento/silver	bronzo/bronze	oro/gold	nero/black	verniciato/powder	cromato/chrome	oro luc./bright gold	crom.sat/chro.mat
destra/right	N-0105-A-DX	N-0105-B-DX	N-0105-O-DX	N-0105-N-DX	N-0105-V-DX	N-0105-C-DX	N- 0105-L-DX	N-0105-I-DX
sinistra/left	N-0105-A-SX	N-0105-B-SX	N-0105-O-SX	N-0105-N-SX	N-0105-V-SX	N-0105-C-SX	N- 0105-L-SX	N-0105-I-SX

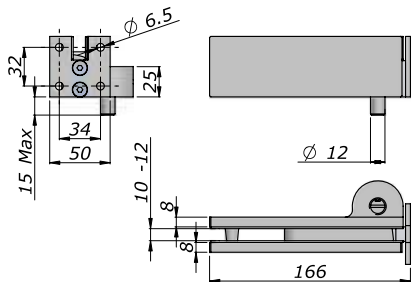
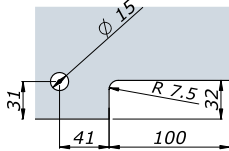
art. 106



Cerniera sfalsata alta
Offset top hinge

	argento/silver	bronzo/bronze	oro/gold	nero/black	verniciato/powder	cromato/chrome	oro luc./bright gold	crom.sat/chro.mat
destra/right	N-0106-A-DX	N-0106-B-DX	N-0106-O-DX	N-0106-N-DX	N-0106-V-DX	N-0106-C-DX	N- 0106-L-DX	N-0106-I-DX
sinistra/left	N-0106-A-SX	N-0106-B-SX	N-0106-O-SX	N-0106-N-SX	N-0106-V-SX	N-0106-C-SX	N- 0106-L-SX	N-0106-I-SX

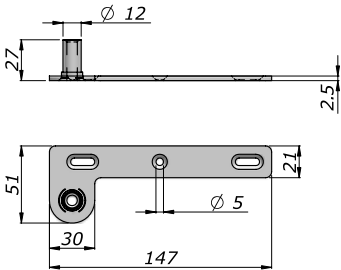
art. 107



Attacco sopra luce sfalsato
Offset over panel patch fitting

	argento/silver	bronzo/bronze	oro/gold	nero/black	verniciato/powder	cromato/chrome	oro luc./bright gold	crom.sat/chro.mat
destra/right	N-0107-A-DX	N-0107-B-DX	N-0107-O-DX	N-0107-N-DX	N-0107-V-DX	N-0107-C-DX	N- 0107-L-DX	N-0107-I-DX
sinistra/left	N-0107-A-SX	N-0107-B-SX	N-0107-O-SX	N-0107-N-SX	N-0107-V-SX	N-0107-C-SX	N- 0107-L-SX	N-0107-I-SX

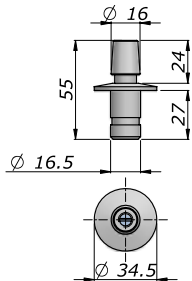
art. 302



Piastra per Art. 106
Top pivot for Art. 106

	argento / silver
destra/right	N-0302-A-DX
sinistra/left	N-0302-A-SX

art. 311



Piletta a pavimento
Floor pivot

	argento / silver
	N-0311-A

Zoccoli
Rails

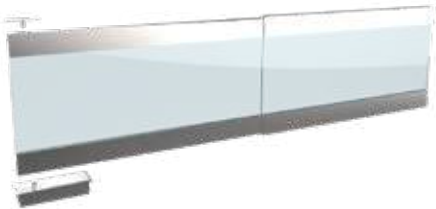
Esempi di composizione e consigli tecnici / Set composition examples and technical informations



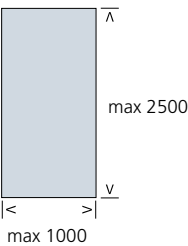
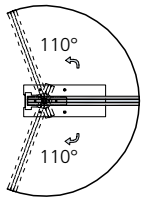
Porta singola senza chiusura
Single door without lock



Porta singola con chiusura
Single door with lock



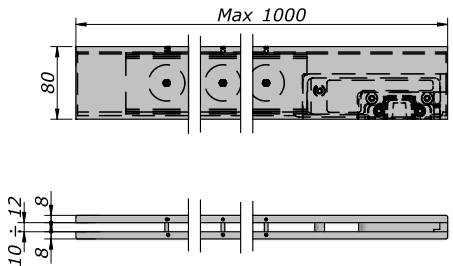
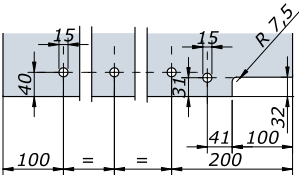
Porta singola con fisso laterale
Single door with side fixed glass



#1	#2	#3
No. 01 Art. 450	No. 01 Art. 450A	No. 01 Art. 450
No. 01 Art. 451	No. 01 Art. 451A	No. 01 Art. 451
No. 01 Art. 301	No. 01 Art. 301	No. 01 Art. 301
No. 01 Art. 311/8000	No. 01 Art. 311/8000	No. 01 Art. 311/8000
+ Maniglia / Handle	No. 01 Art. 314 + Maniglia / Handle	No. 02 Art. 452 No. 04 Art. 304 + Serratura_Maniglia / Lock_handle

portata / load	spessori/thickness
kg 100	8 -12
NB: specificare lunghezza in caso d'ordine length has to be specified while ordering	
oltre 1000 mm realizzabili su richiesta over 1000 mm on request	

art. 450

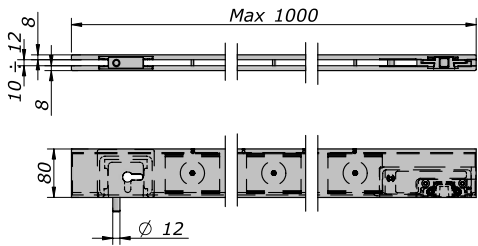
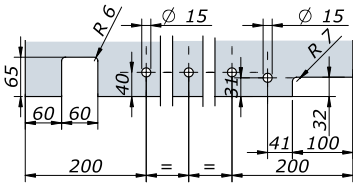


Zoccolo con cerniera bassa
Bottom rail with hinge

specificare lunghezza / specify length

argento / silver	bronzo / bronze	nero / black	crom. sat / chro. mat	altre finiture / other finishes
N-0450-A	N-0450-B	N-0450-N	N-0450-I	a richiesta / on demand

art. 450A

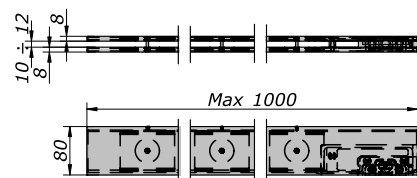
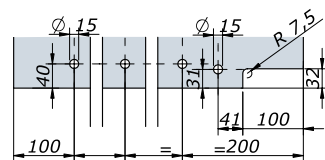


Zoccolo con cerniera bassa e serratura
Rail with bottom hinge and lock

specificare lunghezza / specify length

argento / silver	bronzo / bronze	nero / black	crom. sat / chro. mat	altre finiture / other finishes
N-450A-A	N-450A-B	N-450A-N	N-450A-I	a richiesta / on demand

art. 451

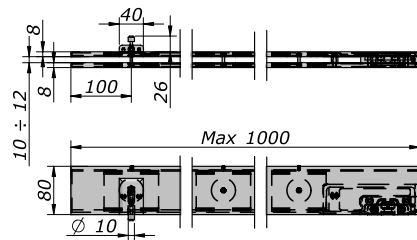
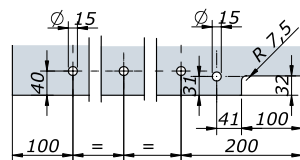


Zoccolo con cerniera alta
Top rail with hinge

specificare lunghezza / specify length

argento / silver	bronzo / bronze	nero / black	crom. sat / chro. mat	altre finiture / other finishes
N-0451-A	N-0451-B	N-0451-N	N-0451-I	a richiesta / on demand

art. 451A

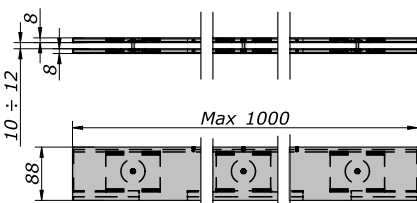
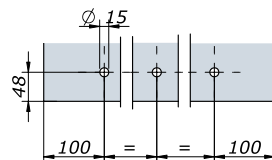


Zoccolo con cerniera alta e catenaccio
Top rail with hinge and bolt

specificare lunghezza / specify length

argento / silver	bronzo / bronze	nero / black	crom. sat / chro. mat	altre finiture / other finishes
N-451A-A	N-451A-B	N-451A-N	N-451A-I	a richiesta / on demand

art. 452

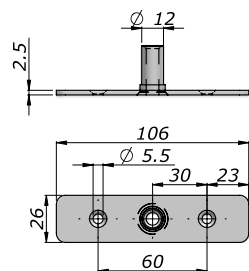


Zoccolo fisso
Fixed rail

specificare lunghezza / specify length

argento / silver	bronzo / bronze	nero / black	crom. sat / chro. mat	altre finiture / other finishes
N-0452-A	N-0452-B	N-0452-N	N-0452-I	a richiesta / on demand

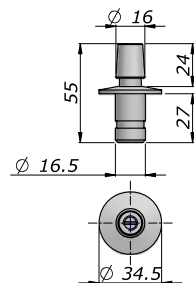
art. 301



Piastra superiore per Art. 102/109
Top pivot for Art. 102/109

argento/silver
N-0301-A

art. 311



Piletta a pavimento
Floor pivot

argento/silver
N-0311-A

Chiudiporta
Floorsprings



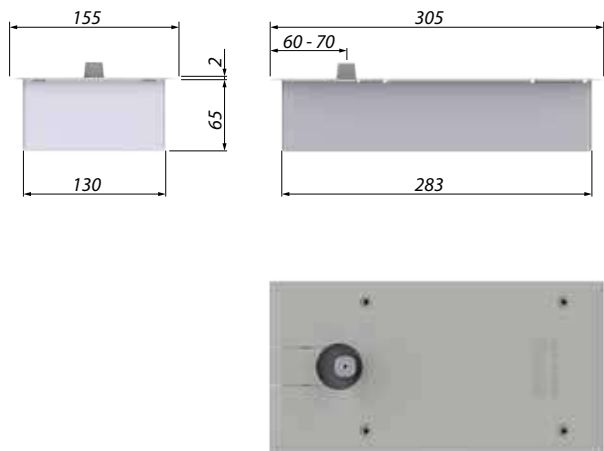
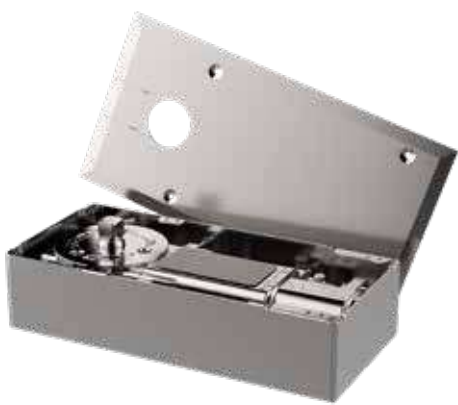
Chiudiporta

I chiudiporta sono studiati per offrire una funzionalità "easy opening". Il momento di apertura della porta è stato attentamente studiato per facilitarne l'apertura quando non vi è più l'inerzia della spinta persona. Infatti l'indurimento iniziale diminuisce leggermente dopo i primi 15°-20° rendendo possibile l'apertura della porta anche per bambini ed anziani.

Floorspring

Door closers are designed for easy opening. The opening time has been carefully designed to make the door open easily when the inactivity of the movement ends. That is why the resistance decreases slightly after the first 15°-20° making the door opening easier for children and elderly.

Art.	2500	6000	6800
Forze standard Standard strength	F2	F2	-
	F3	F3	F3
	F4/5	-	-
Heavy-Duty	Fino a 350 kg a richiesta Up to 350 kg upon request	-	-
Forze per disabili Strength for disabled	A richiesta Upon request	A richiesta Upon request	-
Ambienti aggressivi Aggressive environments	A richiesta Upon request	A richiesta Upon request	-



Chiudiporta grande
Big floor spring

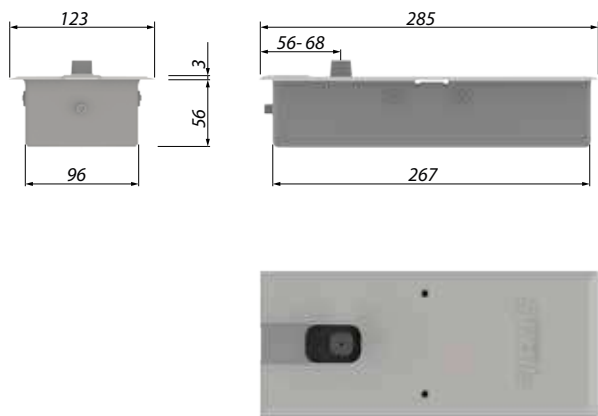
	Forza Strength	Esterni Exterior	Interni Interior	Codice Code
Larghezza Massima Porta Maximum door width	F2 (Giallo/Yellow)	750 mm	850 mm	N-2502-I
	F3 (Rosso/Red)	1000 mm	1100 mm	N-2500-I (90°) / N-2500-I-0 (0°)
	F4/5 (Nero/Black)	1100 mm	1400 mm	N-2504-I
Peso massimo porta Maximum door weight		120 kg		
Dimensioni cassetta cementare Dimensions of cement case		130 x 283 x 65 mm		

Caratteristiche principali

- Grandi possibilità di regolazione all'interno della cassetta a cementare soprattutto in senso longitudinale per consentire l'impiego anche dove vi sono interessi di incernieramento molto diversi.
- Due circuiti d'olio completamente indipendenti per la programmazione delle velocità di chiusura con due valvole di regolazione: una da circa 115° a 15° e l'altra da circa 15° a 0°.
- A richiesta esecuzione speciale per porte sino a 350 kg.
- Il tassello (abbinato al coperchio) viene inserito e fissato a scatto, a porta e coperchio montati. La sua dimenticanza non implica lo smontaggio della porta.
- Una sola forza (predefinita in fabbrica) si adatta perfettamente al 90% delle porte. Due forze supplementari coprono completamente il restante 10% delle porte.
- A richiesta blocco corsa ed indurimento a partire da 70°.
- A richiesta versione con teste di perno intercambiabili.
- A richiesta versione con perno prolungato.
- A richiesta termocostanza.
- Garanzia 24 mesi / 2.000.000 di cicli.

Main features

- Huge adjustment possibilities inside the cement case, above all longitudinally to allow the use even where hinge axes are very different.
- Two completely independent oil circuits to program the desired closing speed by two regulating valves: one from about 115° to 15° and the other from about 15° to 0°.
- Special execution for doors up to 350 kg upon request.
- The rear part of the cover is inserted and fastened by snapping it, after the door and the cover have been installed. If this step is forgotten, you can easily snap it without dismantling the door.
- A single strength (pre-set in factory) perfectly suits to 90% of doors. Two additional forces covers the remaining 10% of other doors.
- Back stop and back check from 70° upon request.
- We can supply a version with interchangeable spindle heads upon request.
- We can supply a version with an extended spindle upon request.
- Thermo constancy available upon request.
- Warranty 24 months / 2.000.000 cycles.



Chiudiporta piccolo
Small floor spring

	Forza Strength	Esterni Exterior	Interni Interior	Codice Code
Larghezza Massima Porta Maximum door width	F2 (Giallo/Yellow)	750 mm	850 mm	N-6002-I
	F3 (Rosso/Red)	1000 mm	1100 mm	N-6000-I (90°) / N-6000-I-0 (0°)
Peso massimo porta Maximum door weight		160 kg		
Dimensioni cassetta cementare Dimensions of cement case		96,5 x 267 x 56 mm		

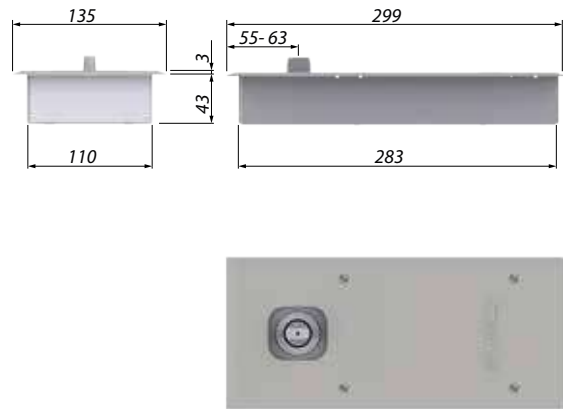
Caratteristiche principali

- Non è necessario tagliare il coperchio lato stipite in quanto sono previste 3 posizioni di fissaggio sulla cassetta da scegliere in cantiere.
- Il sistema di bloccaggio brevettato è unico e consente una regolazione in altezza che eccede l'altezza della cassetta a cementare di ben 5 mm o spessorando il chiudiporta fuoriesce addirittura di 10 mm.
- Il sistema di blocco prevede 3 viti a punta che potrebbero essere sufficienti per fissare il chiudiporta nelle installazioni in cui non è possibile cementare la cassetta su tutti i lati.
- La cassetta ha margini arrotondati per facilitare lo scasso nel pavimento.
- È disponibile una versione speciale con cassetta, dispositivi di bloccaggio e viti di regolazione in acciaio inox adatta ad installazioni in ambiente aggressivo o per industrie alimentari, ospedali, piscine etc...
- L'inserimento del tassello è agevole e deve essere fatto a porta e coperchio installati. Per rimuoverlo non è necessario smontare la porta.
- Termocostanza di serie.
- Una valvola programma le velocità di chiusura da ca. 130° a 15°. Una valvola regola lo scatto finale da ca. 15° a 0°.
- A richiesta versione con teste di perno intercambiabili.
- A richiesta versione con perno prolungato.
- Garanzia 24 mesi / 2.000.000 di cicli.

Main features

- You can avoid cutting the cover on the jamb side as you can choose directly on job-site three different fixing positions of the cover on the cement case.
- Our patented blocking system is unique and allows to adjust the height, which exceeds the height of the cement case by 5 mm or by using spacers the door closer comes out even by 10 mm.
- The blocking system foresees 3 tip screws that could be enough to fix the door closer in installations where it is not possible to cement all around the case.
- The cement case has rounded edges to make it easier to prepare the floor hole.
- It is available a special version with stainless steel cement case, blocking system and regulating screws suitable for aggressive installations or food industries, hospitals, swimming pools etc.
- The insertion of the rear cover is easy and needs to be done once the over ant the door are installed, it is not necessary to dismantle the door to remove it.
- Thermo constancy as standard.
- One valve programs the closing speeds from about 130° to 15° and another one regulates the latch speed from about 15° to 0°.
- Version with interchangeable spindle heads upon request.
- Version with extended spindle upon request.
- Warranty 24 months / 2.000.000 cycles.

| art. 6800



Chiudiporta piccolo
Small floor spring

	Forza Strength	Esterni Exterior	Interni Interior	Codice Code
Larghezza Massima Porta Maximum door width	F3 (Rosso/Red)	850 mm	950 mm	N-6800-I
Peso massimo porta Maximum door weight		100 kg		
Dimensioni cassetta cementare Dimensions of cement case		110 x 280 x 43 mm		

Caratteristiche principali

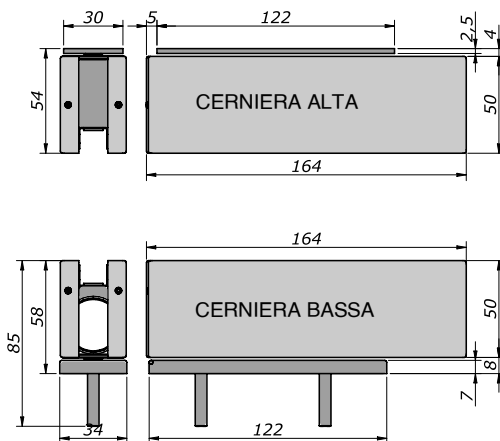
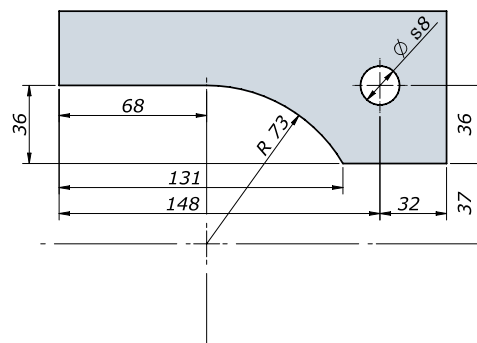
- Profondità di scasso ridotta.
- Studiato e realizzato per essere utilizzato in installazioni interne.
- Non è consigliabile l'utilizzo in luoghi ad alta frequenza di passaggio.
- Una sola forza (predefinita in fabbrica) si adatta perfettamente al 90% delle porte.
- Due circuiti d'olio completamente indipendenti per la programmazione delle velocità di chiusura desiderate con due valvole di regolazione. Una da ca. 115° a 15° e l'altra da ca. 15° a 0°.
- Il fissaggio del coperchio alla cassetta a cementare con due posizioni predefinite permette di installare il chiudiporta con qualsiasi interasse di rotazione senza dover modificare in cantiere il coperchio.
- Blocco corsa di serie a 120°.
- Garanzia 24 mesi / 500.000 di cicli.

Main features

- Particularly suitable for installations that require a minimum depth of excavation for thin slab applications.
- It was designed and built to be installed on interior.
- it is not recommended for high traffic areas use.
- A single strength (pre-set in factory) perfectly suits to 90% of doors.
- Two completely independent oil circuits to program the desired closing speed with two regulating valves. One from about 115° to 15° and the other from about 15° to 0°.
- The fixing of the cover to the cement case with two pre-set positions allows the door closer installation without cutting the cover on site.
- Back stop standard at 120°.
- Warranty 24 months / 500.000 cycles.

Cerniere idrauliche Hydraulic hinges





Kit cerniera idraulica incluso cerniera alta e perni di fissaggio
Hydraulic hinge kit including top hinge and fixing pins

Forza	Larghezza Massima Porta	Peso Massimo Porta	Spessore massimo	Codice Code			
				Argento Silver	Inox satinato Saten staniless steel	Inox lucido Polish stainless steel	Altre finiture Other finish
Strength	Maximum door width	Maximum door width	Maximum thickness				
Light	900 mm	100 kg	10-13,52 mm	N-3000-A	N-3000-I	N-3000-C	A richiesta Upon request

Caratteristiche principali

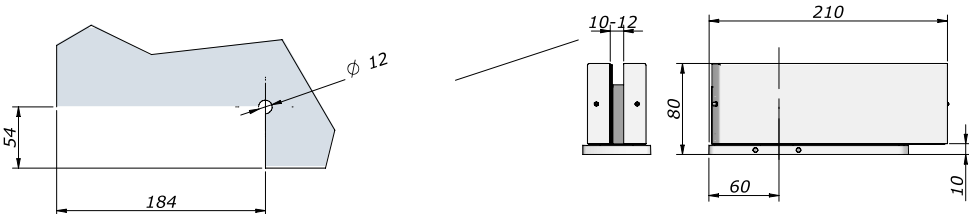
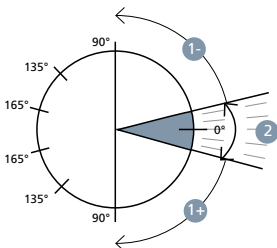
- Nessuno scasso a pavimento.
- La piastra di fissaggio a pavimento permette di regolare la posizione di chiusura di +/- 3°.
- Fermo standard a 90°.
- A richiesta altre finiture e finiture RAL.

Main features

- No floor breaking.
- The floor fixing plate allows to adjust the closing position by +/- 3°.
- Standard 90° stop.
- On request RAL and other finishes.



- 1 = spazio di regolazione velocità di chiusura
adjustment of closing speed
- 2 = spazio di regolazione scatto di chiusura
adjustment of latching speed



Cerniera idraulica
Hydraulic hinge

Forza	Larghezza Massima Porta	Peso Massimo Porta	Spessore massimo	Codice Code	
				Inox satinato Satin Stainless Steel	Inox lucido Polish Stainless Steel
Strength	Maximum door width	Maximum door width	Maximum thickness		
Light	700 mm	80 kg	10-12 mm	N-5002-I	N-5002-C
Standard	1000 mm	100 kg	10-12 mm	N-5000-I	N-5000-C
Heavy	1100 mm (esterni/exterior)	Fino a / Up to 200 kg	10-12 mm	N-5004-I	N-5004-C
	700 mm		13,52 – 17,52	N-5005-I	N-5005-C

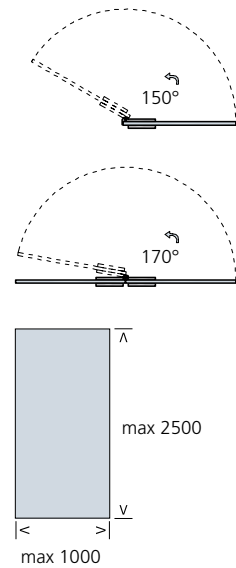
Caratteristiche principali

- Nessuno scasso a pavimento.
- La piastra di fissaggio a pavimento permette un'ampia regolazione della posizione del perno (6 mm avanti/indietro, 3 mm destra/sinistra).
- Regolazione del punto della posizione di chiusura di +/- 14°.
- Fermo standard a 90°.
- Versione standard sempre disponibile, a richiesta altre portate e fermo a 135°/165°/180° o senza fermo.

Main features

- No floor breaking.
- Floor fixing plate allows a wide adjustment of the pin position (6 mm backward/ forward, 3 mm left/right).
- Adjustment of closing position by +/- 14°.
- Door hold open at 90°.
- Standard 90° stop.
- Standard version available on stock, other version and closing at 135°/165°/180° or without stop are available on demand.

Cerniere a bandiera
Flag hinges



portata / load	spessori/thickness
kg 100	8 -12



Porta doppia vetro-vetro
Sagle door glass to glass

#3
No. 02 Art. 152
No. 04 Art. 304
+ Serratura_Maniglia / Lock_handle



Porta singola vetro-muro
Sagle door wall to glass

#1
No. 02 Art. 120
+ Serratura_Maniglia / Lock_handle



Porta singola vetro-muro
Sagle door wall to glass

#2
No. 02 Art. 150
+ Serratura_Maniglia / Lock_handle



Porta singola vetro-muro
Sagle door wall to glass

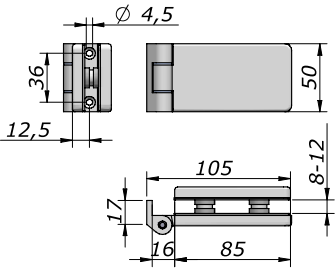
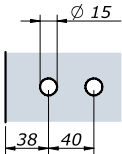
#4
No. 02 Art. 151
+ Serratura_Maniglia / Lock_handle



Porta doppia vetro-vetro
Sagle door glass to glass

#5
No. 02 Art. 151
No. 02 Art. 153
No. 04 Art. 304
+ Serratura_Maniglia / Lock_handle

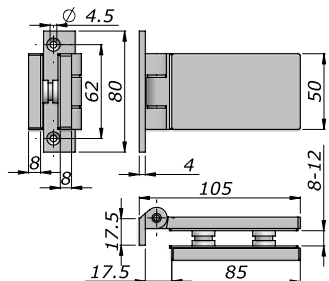
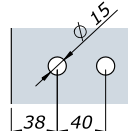
| art. 120



Cerniera a bandiera
Flag hinge

argento / silver	bronzo / bronze	oro / gold	nero / black	verniciato / powder	cromato / chrome	oro luc. / bright gold	crom. sat / chro. mat
N-0120-A	N-0120-B	N-0120-O	N-0120-N	N- 0120-V	N-0120-C	N-0120-L	N-0120-I

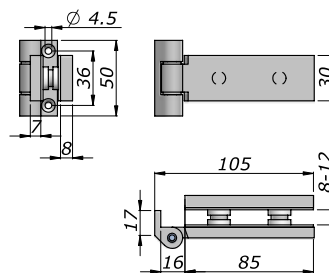
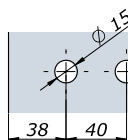
art. 150



Cerniera a bandiera
Flag hinge

argento / silver	bronzo / bronze	oro / gold	nero / black	verniciato / powder	cromato / chrome	oro luc. / bright gold	crom. sat / chro. mat
N-0150-A	N-0150-B	N-0150-O	N-0150-N	N- 0150-V	N-0150-C	N-0150-L	N-0150-I

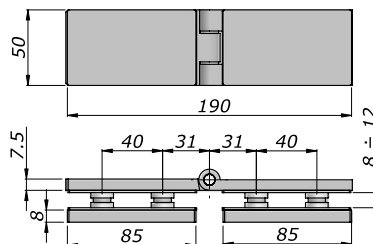
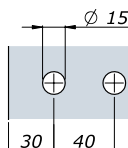
art. 151



Cerniera a bandiera ridotta
Small flag hinge

argento / silver	bronzo / bronze	oro / gold	nero / black	verniciato / powder	cromato / chrome	oro luc. / bright gold	crom. sat / chro. mat
N-0151-A	N-0151-B	N-0151-O	N-0151-N	N-0151-V	N-0151-C	N-0151-L	N-0151-I

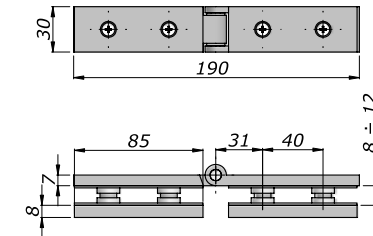
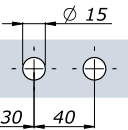
art. 152



Cerniera a bandiera doppia
Double flag hinge

argento / silver	bronzo / bronze	oro / gold	nero / black	verniciato / powder	cromato / chrome	oro luc. / bright gold	crom. sat / chro. mat
N-0152-A	N-0152-B	N-0152-O	N-0152-N	N-0152-V	N-0152-C	N- 0152-L	N-0152-I

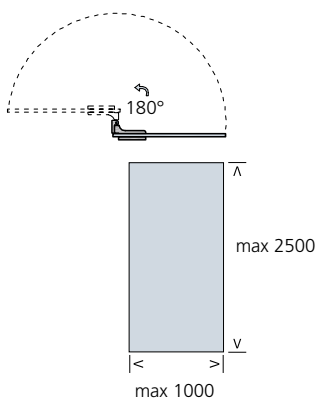
art. 153



Cerniera a bandiera doppia ridotta
Small double flag hinge

argento / silver	bronzo / bronze	oro / gold	nero / black	verniciato / powder	cromato / chrome	oro luc. / bright gold	crom. sat / chro. mat
N-0153-A	N-0153-B	N-0153-O	N-0153-N	N- 0153-V	N-0153-C	N- 0153-L	N-0153-I

Esempi di composizione e consigli tecnici / Set composition examples and technical informations



Porta singola vetro-muro
Single door wall to glass



Porta singola vetro-muro
Single door wall to glass

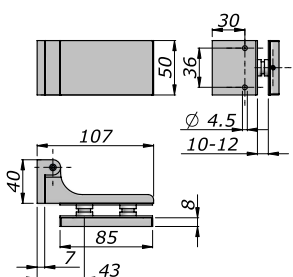
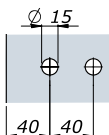


Porta doppia vetro-vetro
Single door glass to glass

portata / load	spessori/thickness
kg 100	8 -14

#1	#2	#3
No. 02 Art. 137	No. 02 Art. 138	No. 02 Art. 139
+ Serratura_Maniglia / Lock_handle	+ Serratura_Maniglia / Lock_handle	+ Serratura_Maniglia / Lock_handle

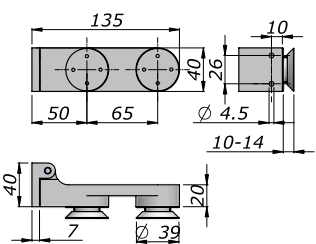
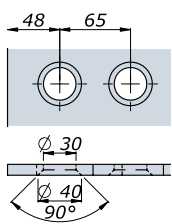
art. 139



Cerniera a bandiera con apertura a 180°
Flag hinge with 180° opening

argento / silver	bronzo / bronze	oro / gold	nero / black	verniciato / powder	cromato / chrome	oro luc. / bright gold	crom. sat / chro. mat
N-0139-A	N-0139-B	N-0139-O	N-0139-N	N-0139-V	N-0139-C	N- 0139-L	N-0139-I

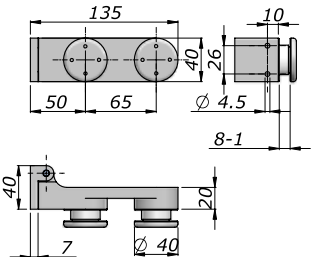
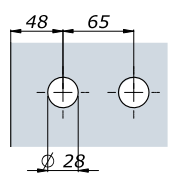
art. 137



Cerniera a bandiera con borchie svasate
Flag hinge with countersunk bosses

argento / silver	bronzo / bronze	oro / gold	nero / black	verniciato / powder	cromato / chrome	oro luc. / bright gold	crom. sat / chro. mat
N-0137-A	N-0137-B	N-0137-O	N-0137-N	N-0137-V	N-0137-C	N- 0137-L	N-0137-I

art. 138



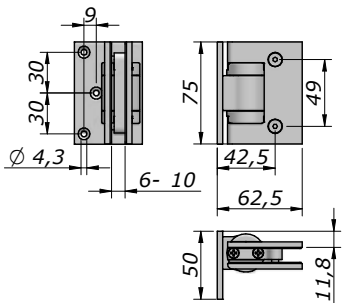
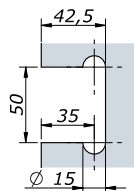
Cerniera a bandiera con borchie piatte
Flag hinge with flat bosses

argento / silver	bronzo / bronze	oro / gold	nero / black	verniciato / powder	cromato / chrome	oro luc. / bright gold	crom. sat / chro. mat
N-0138-A	N-0138-B	N-0138-O	N-0138-N	N-0138-V	N-0138-C	N-0138-L	N-0138-I

Cerniere a scatto Hinges with stop



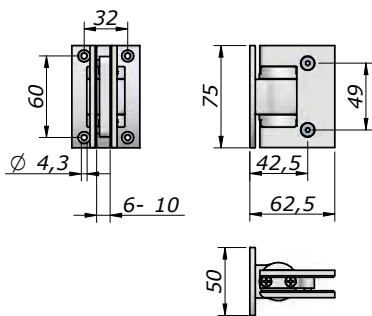
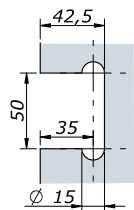
art. 146



Cerniera a scatto singola con piastra sfalsata
Single hinge with stop and offset fixing plate

argento/silver	bronzo/bronze	oro/gold	nero/black	verniciato/powder	cromato/chrome	oro luc./bright gold	silver luc./bright silver	crom. sat/chro. mat
N-0146-A	N-0146-B	N-0146-O	N-0146-N	N-0146-V	N-0146-C	N-0146-L	N-0146-D	N-0146-I

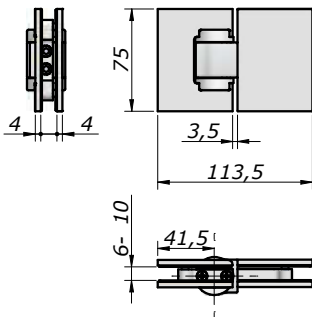
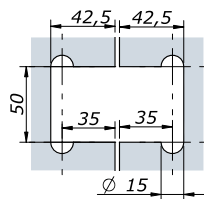
art. 148



Cerniera a scatto singola
Single hinge with stop

argento/silver	bronzo/bronze	oro/gold	nero/black	verniciato/powder	cromato/chrome	oro luc./bright gold	silver luc./bright silver	crom. sat/chro. mat
N-0148-A	N-0148-B	N-0148-O	N-0148-N	N-0148-V	N-0148-C	N-0148-L	N-0148-D	N-0148-I

art. 149



Cerniera a scatto doppia
Double hinge with stop

argento/silver	bronzo/bronze	oro/gold	nero/black	verniciato/powder	cromato/chrome	oro luc./bright gold	silver luc./bright silver	crom. sat/chro. mat
N-0149-A	N-0149-B	N-0149-O	N-0149-N	N-0149-V	N-0149-C	N-0149-L	N-0149-D	N-0149-I

Esempi di composizione e consigli tecnici / Set composition examples and technical informations



Anta singola
Single door

#1	#1	#1
No. 02 Art. 148	No. 04 Art. 148	No. 02 Art. 147
No. 01 Pomolo/Knob	No. 01 Pomolo/Knob	No. 02 Art. 149
		No. 01 Pomolo/Knob



Anta doppia
Double door



Anta + fisso laterale
Double + fixed glass

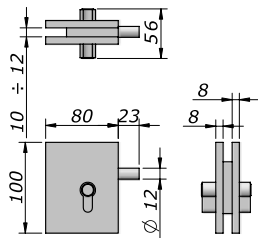
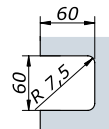




Serrature con catenaccio

Lock with deadbolt

art. 220

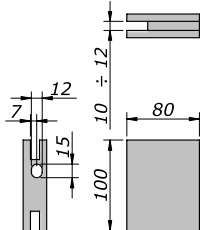
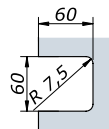


Serratura verticale

Vertical lock

spessore/thickness	argento/silver	bronzo/bronze	oro/gold	nero/black	verniciato/powder	cromato/chrome	oro luc./bright gold	crom.sat/chro.mat
max 12 mm	N-0220-A	N-0220-B	N-0220-O	N-0220-N	N-0220-V	N-0220-C	N-0220-L	N-0220-I
max 14 mm	N-0220-A-14	-	-	-	-	N-0220-C-14	-	N-0220-I-14
max 18 mm	N-0220-A-18	-	-	-	-	N-0220-C-18	-	N-0220-I-18
max 21,52 mm	N-0220-A-20	-	-	-	-	N-0220-C-20	-	N-0220-I-20

art. 221

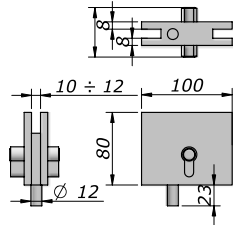
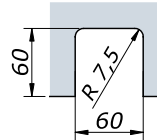


Contro per Art. 220/222

Lock keeper for Art. 220/222

spessore/thickness	argento/silver	bronzo/bronze	oro/gold	nero/black	verniciato/powder	cromato/chrome	oro luc./bright gold	crom.sat/chro.mat
max 12 mm	N-0221-A	N-0221-B	N-0221-O	N-0221-N	N-0221-V	N-0221-C	N-0221-L	N-0221-I
max 14 mm	N-0221-A-14	-	-	-	-	N-0221-C-14	-	N-0221-I-14
max 18 mm	N-0221-A-18	-	-	-	-	N-0221-C-18	-	N-0221-I-18
max 21,52 mm	N-0221-A-20	-	-	-	-	N-0221-C-20	-	N-0221-I-20

art. 222

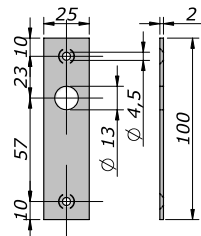


Serratura orizzontale

Horizontal lock

spessore/thickness	argento/silver	bronzo/bronze	oro/gold	nero/black	verniciato/powder	cromato/chrome	oro luc./bright gold	crom.sat/chro.mat
max 12 mm	N-0222-A	N-0222-B	N-0222-O	N-0222-N	N-0222-V	N-0222-C	N-0222-L	N-0222-I
max 14 mm	N-0222-A-14	-	-	-	-	N-0222-C-14	-	N-0222-I-14
max 18 mm	N-0222-A-18	-	-	-	-	N-0222-C-18	-	N-0222-I-18
max 21,52 mm	N-0222-A-20	-	-	-	-	N-0222-C-20	-	N-0222-I-20

art. 312A

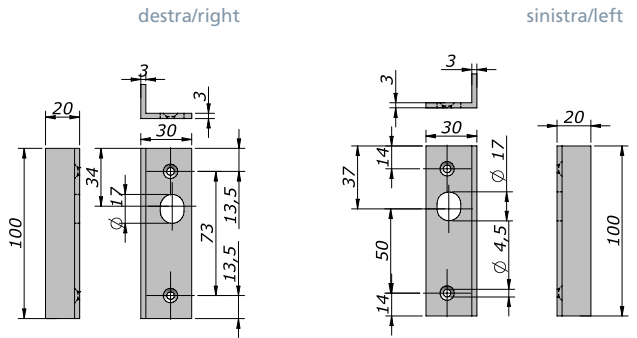
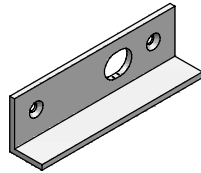
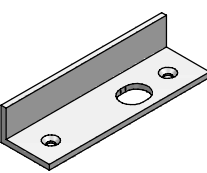


Bocchetta a 180° per art. 220/222/900

180° strike plate Art. 220/222/900

argento / silver	bronzo / bronze	oro / gold	nero / black	verniciato / powder	cromato / chrome	oro luc. / bright gold	crom. sat / chro. mat
N-312A-A	N-312A-B	N-312A-O	N-312A-N	N-312A-V	N-312A-C	N-312A-L	N-312A-I

art. 313A



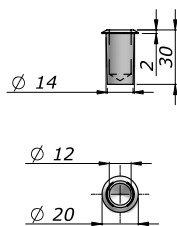
Battuta a 90° per Art. 220/222

90° strike plate for Art. 220/222



	argento/silver	bronzo/bronze	oro/gold	nero/black	verniciato/powder	cromato/chrome	oro luc./bright gold	crom. sat/chro. mat
destra/right	N-313A-A-DX	N-313A-B-DX	N-313A-O-DX	N-313A-N-DX	N-313A-V-DX	N-313A-C-DX	N-313A-L-DX	N-313A-I-DX
sinistra/left	N-313A-A-SX	N-313A-B-SX	N-313A-O-SX	N-313A-N-SX	N-313A-V-SX	N-313A-C-SX	N-313A-L-SX	N-313A-I-SX

art. 314

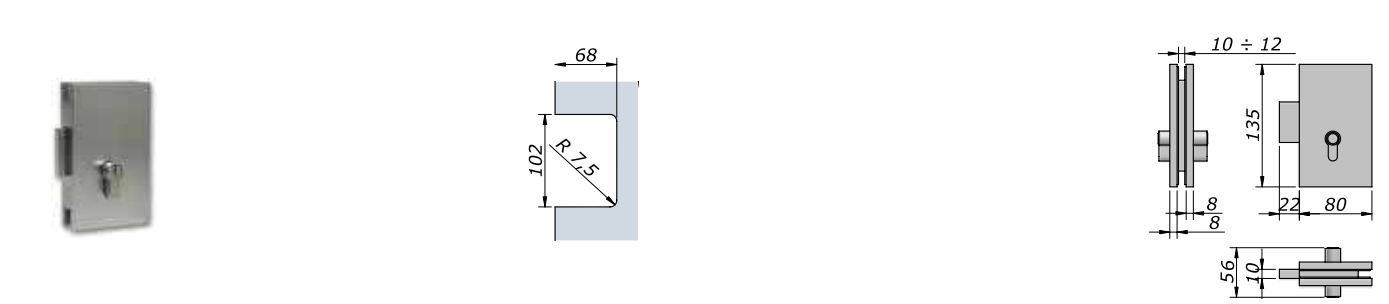


Bussola a pavimento grande

Big floor bush

argento / silver	bronzo / bronze	oro / gold	nero / black	verniciato / powder	cromato / chrome	oro luc. / bright gold	crom. sat / chro. mat
N-0314-A	N-0314-B	N-0314-O	N-0314-N	N-0314-V	N-0314-C	N-0314-L	N-0314-I

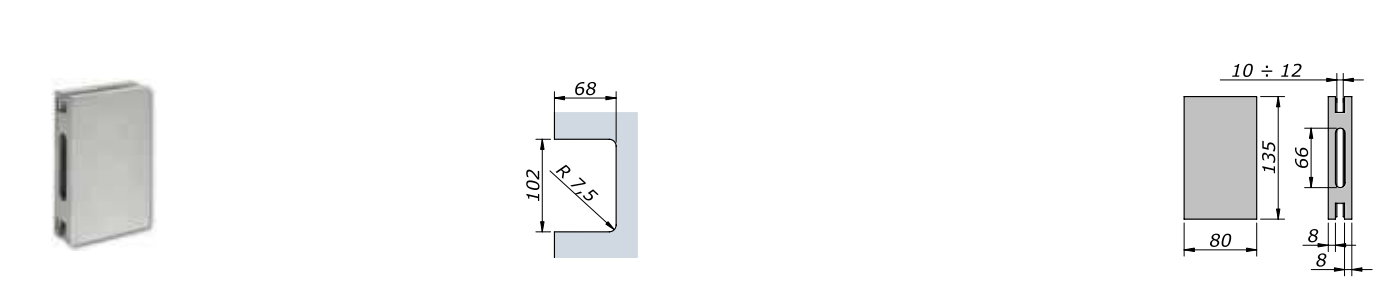
| art. 201



Serratura
Lock

argento / silver	bronzo / bronze	oro / gold	nero / black	verniciato / powder	cromato / chrome	oro luc. / bright gold	crom. sat / chro. mat
N-0201-A	N-0201-B	N-0201-O	N-0201-N	N-0201-V	N-0201-C	N- 0201-L	N-0201-I

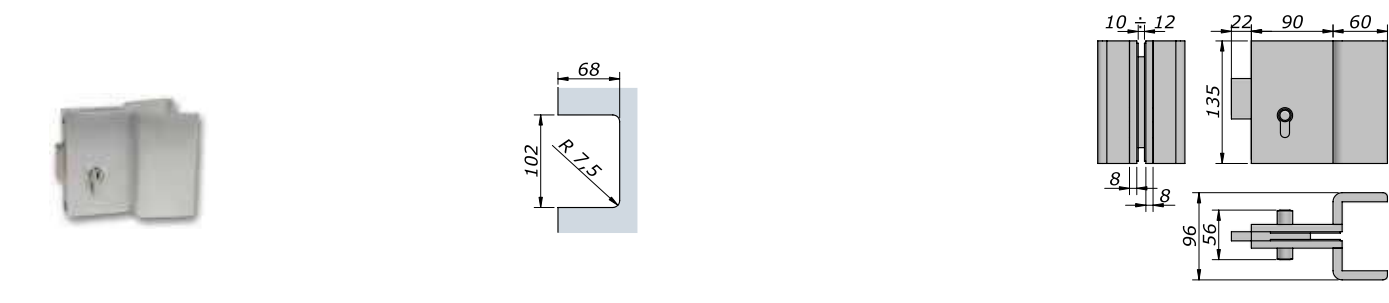
| art. 202



Contro per Art. 201/203
Lock keeper for Art. 201/203

argento / silver	bronzo / bronze	oro / gold	nero / black	verniciato / powder	cromato / chrome	oro luc. / bright gold	crom. sat / chro. mat
N-0202-A	N-0202-B	N-0202-O	N-0202-N	N-0202-V	N-0202-C	N- 0202-L	N-0202-I

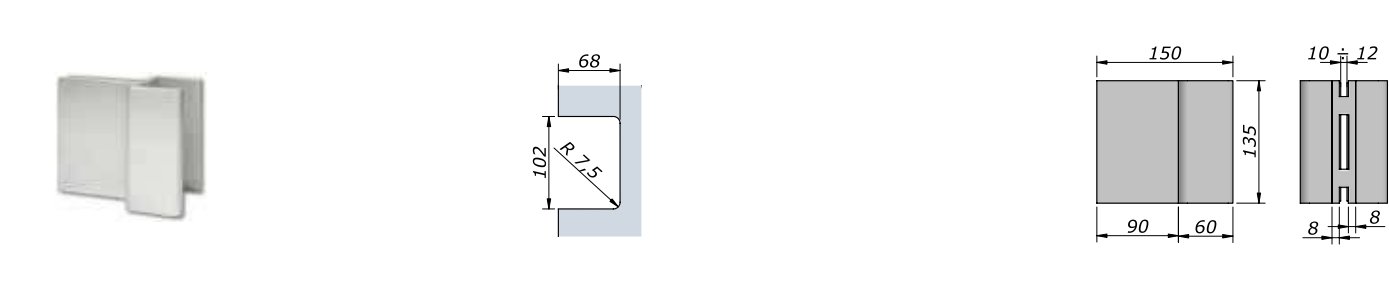
| art. 203



Serratura con maniglie
Lock with handles

argento / silver	bronzo / bronze	oro / gold	nero / black	verniciato / powder	cromato / chrome	oro luc. / bright gold	crom. sat / chro. mat
N-0203-A	N-0203-B	N-0203-O	N-0203-N	N-0203-V	N-0203-C	N- 0203-L	N-0203-I

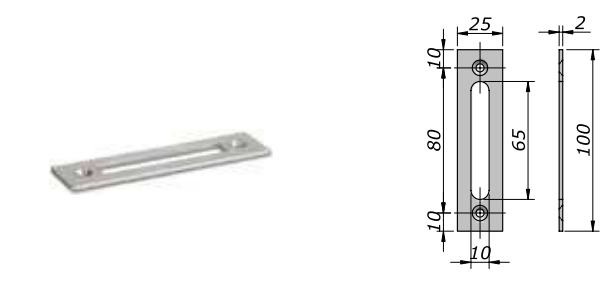
| art. 204



Contro per Art. 203
Lock keeper for Art. 203

argento / silver	bronzo / bronze	oro / gold	nero / black	verniciato / powder	cromato / chrome	oro luc. / bright gold	crom. sat / chro. mat
N-0204-A	N-0204-B	N-0204-O	N-0204-N	N-0204-V	N-0204-C	N-0204-L	N-0204-I

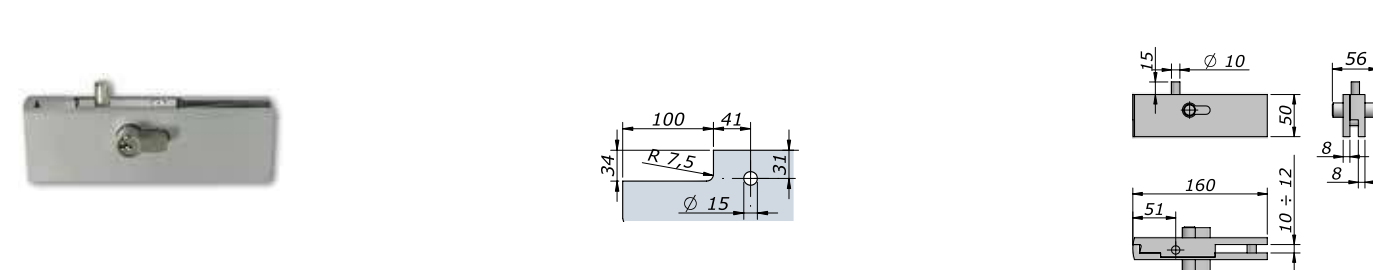
| art. 312



Bocchetta a 180° per Art. 201/203
180° strike plate for Art. 201/203

argento / silver	bronzo / bronze	oro / gold	nero / black	verniciato / powder	cromato / chrome	oro luc. / bright gold	crom. sat / chro. mat
Art. 312	N-0312-A	N-0312-B	N-0312-O	N-0312-N	N-0312-V	N-0312-C	N- 0312-L
Art. 313	N-0313-A	N-0313-B	N-0313-O	N-0313-N	N-0313-V	N-0313-C	N- 0313-L

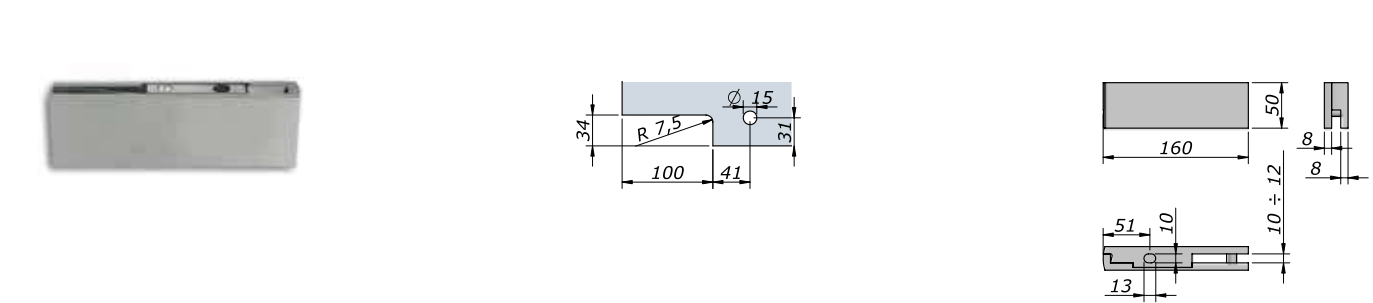
| art. 235



Serratura d'angolo
Corner lock

argento / silver	bronzo / bronze	oro / gold	nero / black	verniciato / powder	cromato / chrome	oro luc. / bright gold	crom. sat / chro. mat
N-0235-A	N-0235-B	N-0235-O	N-0235-N	N-0235-V	N-0235-C	N- 0235-L	N-0235-I

| art. 236



Contro per Art. 235
Lock keeper for Art. 235

argento / silver	bronzo / bronze	oro / gold	nero / black	verniciato / powder	cromato / chrome	oro luc. / bright gold	crom. sat / chro. mat
N-0236-A	N-0236-B	N-0236-O	N-0236-N	N-0236-V	N-0236-C	N-0236-L	N-0236-I

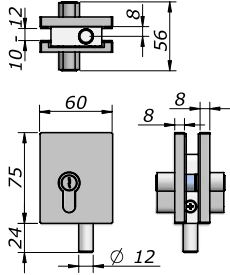
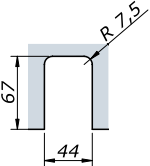

| art. 316



Bussola a pavimento piccola
Small floor bush

argento / silver	bronzo / bronze	oro / gold	nero / black	verniciato / powder	cromato / chrome	oro luc. / bright gold	crom. sat / chro. mat
N-0316-A	N-0316-B	N-0316-O	N-0316-N	N-0316-V	N-0316-C	N-0316-L	N-0316-I

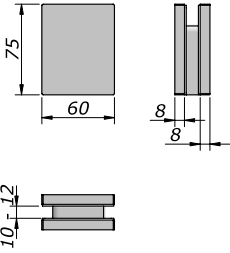
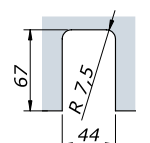

art. 240



Serratura piccola
Small lock

argento / silver	bronzo / bronze	oro / gold	nero / black	verniciato / powder	cromato / chrome	oro luc. / bright gold	crom. sat / chro. mat
N-0240-A	N-0240-B	N-0240-O	N-0240-N	N-0240-V	N-0240-C	N- 0240-L	N-0240-I

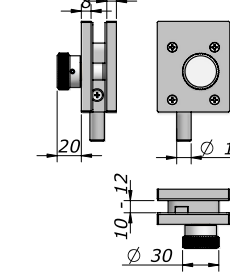
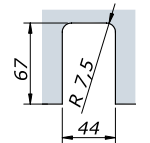

art. 241



Contro per Art. 240/242
Lock keeper for Art. 240/242

argento / silver	bronzo / bronze	oro / gold	nero / black	verniciato / powder	cromato / chrome	oro luc. / bright gold	crom. sat / chro. mat
N-0241-A	N-0241-B	N-0241-O	N-0241-N	N-0241-V	N-0241-C	N- 0241-L	N-0241-I

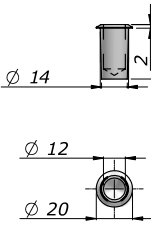

art. 242



Catenaccio con pomolo
Big bolt with knob

argento / silver	bronzo / bronze	oro / gold	nero / black	verniciato / powder	cromato / chrome	oro luc. / bright gold	crom. sat / chro. mat
N-0242-A	N-0242-B	N-0242-O	N-0242-N	N-0242-V	N-0242-C	N- 0242-L	N-0242-I

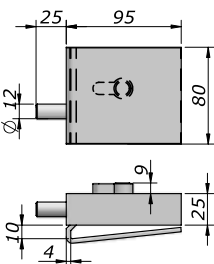
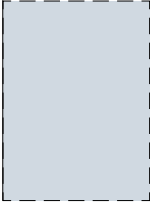

art. 314



Bussola a pavimento grande
Big floor bush

argento / silver	bronzo / bronze	oro / gold	nero / black	verniciato / powder	cromato / chrome	oro luc. / bright gold	crom. sat / chro. mat
N-0314-A	N-0314-B	N-0314-O	N-0314-N	N-0314-V	N-0314-C	N-0314-L	N-0314-I

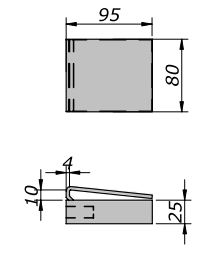


art. 900



Serratura senza tacca
Lock without cutout

argento / silver	bronzo / bronze	oro / gold	nero / black	verniciato / powder	cromato / chrome	oro luc. / bright gold	crom. sat / chro. mat
N-0900-A	N-0900-B	N-0900-O	N-0900-N	N-0900-V	N-0900-C	N- 0900-L	N-0900-I

art. 901



Contro per Art. 900
Lock keeper for Art. 900

argento / silver	bronzo / bronze	oro / gold	nero / black	verniciato / powder	cromato / chrome	oro luc. / bright gold	crom. sat / chro. mat
N-0901-A	N-0901-B	N-0901-O	N-0901-N	N-0901-V	N-0901-C	N-0901-L	N-0901-I

art. 314



Bussola a pavimento grande
Big floor bush

argento / silver	bronzo / bronze	oro / gold	nero / black	verniciato / powder	cromato / chrome	oro luc. / bright gold	crom. sat / chro. mat
N-0314-A	N-0314-B	N-0314-O	N-0314-N	N-0314-V	N-0314-C	N-0314-L	N-0314-I

art. 312A



Bocchetta a 180° per art. 220/222/900
180° strike plate Art. 220/222/900

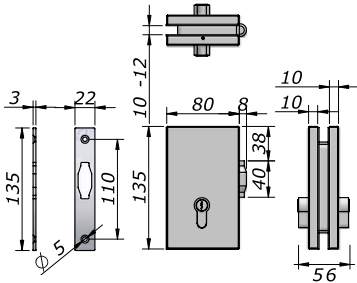
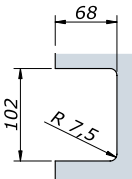
argento / silver	bronzo / bronze	oro / gold	nero / black	verniciato / powder	cromato / chrome	oro luc. / bright gold	crom. sat / chro. mat
N-312A-A	N-312A-B	N-312A-O	N-312A-N	N-312A-V	N-312A-C	N-312A-L	N-312A-I

Serrature con rullo

Locks with roller



art. 232

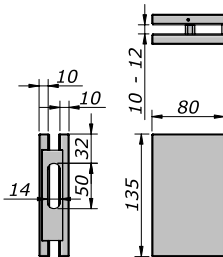
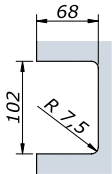


Serratura con rullo e cilindro

Lock with roller and cylinder

argento / silver	bronzo / bronze	oro / gold	nero / black	verniciato / powder	cromato / chrome	oro luc. / bright gold	crom. sat / chro. mat
N-0232-A	N-0232-B	N-0232-O	N-0232-N	N-0232-V	N-0232-C	N-0232-L	N-0232-I

art. 231

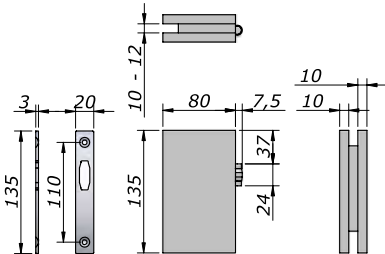
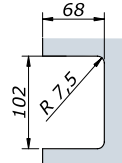


Contro per Art. 232

Lock keeper for Art. 232

argento / silver	bronzo / bronze	oro / gold	nero / black	verniciato / powder	cromato / chrome	oro luc. / bright gold	crom. sat / chro. mat
N-0231-A	N-0231-B	N-0231-O	N-0231-N	N-0231-V	N-0231-C	N-0231-L	N-0231-I

art. 230

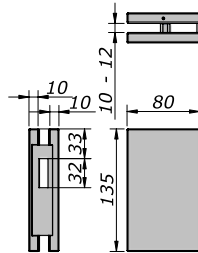
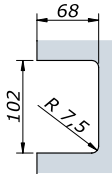


Serratura con rullo senza cilindro

Lock with roller without cylinder

argento / silver	bronzo / bronze	oro / gold	nero / black	verniciato / powder	cromato / chrome	oro luc. / bright gold	crom. sat / chro. mat
N-0230-A	N-0230-B	N-0230-O	N-0230-N	N-0230-V	N-0230-C	N-0230-L	N-0230-I

art. 233



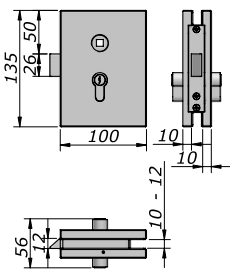
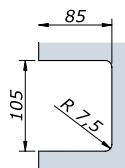
Contro per Art. 232A e Art. 230

Catch for Art. 232A e Art. 230

argento / silver	bronzo / bronze	oro / gold	nero / black	verniciato / powder	cromato / chrome	oro luc. / bright gold	crom. sat / chro. mat
N-0233-A	N-0233-B	N-0233-O	N-0233-N	N-0233-V	N-0233-C	N-0233-L	N-0233-I

Serrature a scrocco
Latch locks

art. 205

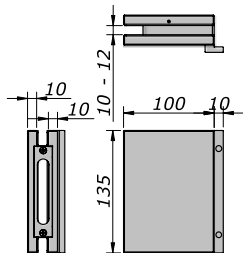
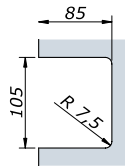


Serratura scrocco e foro maniglia
Spring latch lock with hole for handle



	argento/silver	bronzo/bronze	oro/gold	nero/black	verniciato/powder	cromato/chrome	oro luc./bright gold	crom. sat./chro. mat
destra/right	N-0205-A-DX	N-0205-B-DX	N-0205-O-DX	N-0205-N-DX	N-0205-V-DX	N-0205-C-DX	N-0205-L-DX	N-0205-I-DX
sinistra/left	N-0205-A-SX	N-0205-B-SX	N-0205-O-SX	N-0205-N-SX	N-0205-V-SX	N-0205-C-SX	N-0205-L-SX	N-0205-I-SX

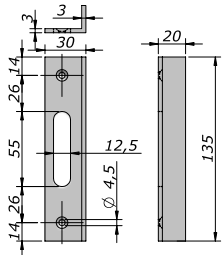
art. 206



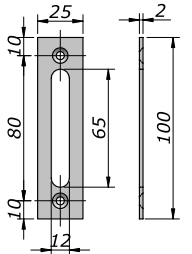
Contro per Art. 205
Lock keeper for Art. 205

	argento / silver	bronzo / bronze	oro / gold	nero / black	verniciato / powder	cromato / chrome	oro luc. / bright gold	crom. sat / chro. mat
N-0206-A	N-0206-B	N-0206-O	N-0206-N	N-0206-V	N-0206-C	N-0206-L	N-0206-I	

art. 313B



art. 315

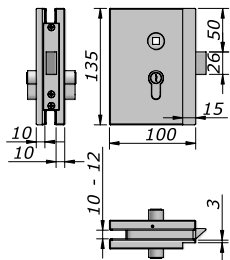
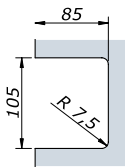


Battuta a 90° per Art. 205
90° strike plate for Art. 205

Bocchetta 180° per Art. 205
180° strike plate Art. 205

	argento / silver	bronzo / bronze	oro / gold	nero / black	verniciato / powder	cromato / chrome	oro luc. / bright gold	crom. sat / chro. mat
Art. 313B	N-313B-A	N-313B-B	N-313B-O	N-313B-N	N-313B-V	N-313B-C	N-313B-L	N-313B-I
Art. 315	N-0315-A	N-0315-B	N-0315-O	N-0315-N	N-0315-V	N-0315-C	N-0315-L	N-0315-I

art. 205A

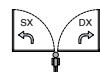
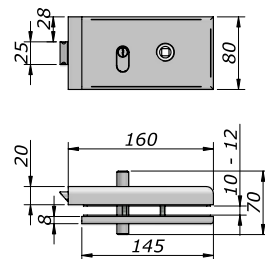
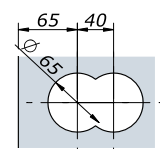


Serratura scrocco e foro maniglia con fresatura
Spring latch lock with milling and handle hole



	argento/silver	bronzo/bronze	oro/gold	nero/black	verniciato/powder	cromato/chrome	oro luc./bright gold	crom. sat./chro. mat
destra/right	N-205A-A-DX	N-205A-B-DX	N-205A-O-DX	N-205A-N-DX	N-205A-V-DX	N-205A-C-DX	N-205A-L-DX	N-205A-I-DX
sinistra/left	N-205A-A-SX	N-205A-B-SX	N-205A-O-SX	N-205A-N-SX	N-205A-V-SX	N-205A-C-SX	N-205A-L-SX	N-205A-I-SX

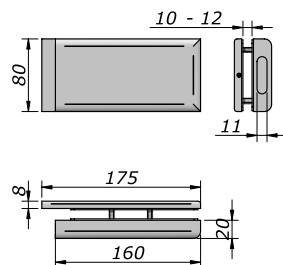
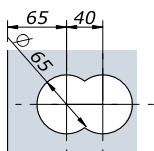
art. 207



Serratura scrocco e foro maniglia
Spring latch lock with hole for handle

	argento/silver	bronzo/bronze	oro/gold	nero/black	verniciato/powder	cromato/chrome	oro luc./bright gold	crom. sat./chro. mat
destra/right	N-0207-A-DX	N-0207-B-DX	N-0207-O-DX	N-0207-N-DX	N-0207-V-DX	N-0207-C-DX	N-0207-L-DX	N-0207-I-DX
sinistra/left	N-0207-A-SX	N-0207-B-SX	N-0207-O-SX	N-0207-N-SX	N-0207-V-SX	N-0207-C-SX	N-0207-L-SX	N-0207-I-SX

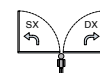
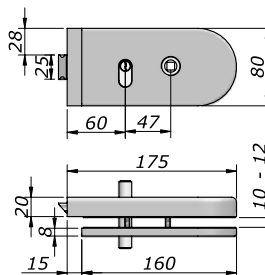
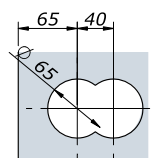
art. 208



Contro per Art. 207
Lock keeper for Art. 207

argento / silver	bronzo / bronze	oro / gold	nero / black	verniciato / powder	cromato / chrome	oro luc. / bright gold	crom. sat / chro. mat
N-0208-A	N-0208-B	N-0208-O	N-0208-N	N-0208-V	N-0208-C	N-0208-L	N-0208-I

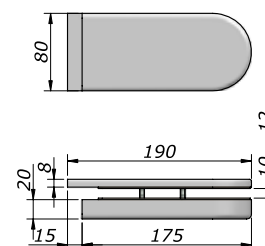
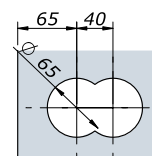
art. 209



Serratura scrocco e foro maniglia
Spring latch lock with hole for handle

	argento/silver	bronzo/bronze	oro/gold	nero/black	verniciato/powder	cromato/chrome	oro luc./bright gold	crom. sat./chro. mat
destra/right	N-0209-A-DX	N-0209-B-DX	N-0209-O-DX	N-0209-N-DX	N-0209-V-DX	N-0209-C-DX	N-0209-L-DX	N-0209-I-DX
sinistra/left	N-0209-A-SX	N-0209-B-SX	N-0209-O-SX	N-0209-N-SX	N-0209-V-SX	N-0209-C-SX	N-0209-L-SX	N-0209-I-SX

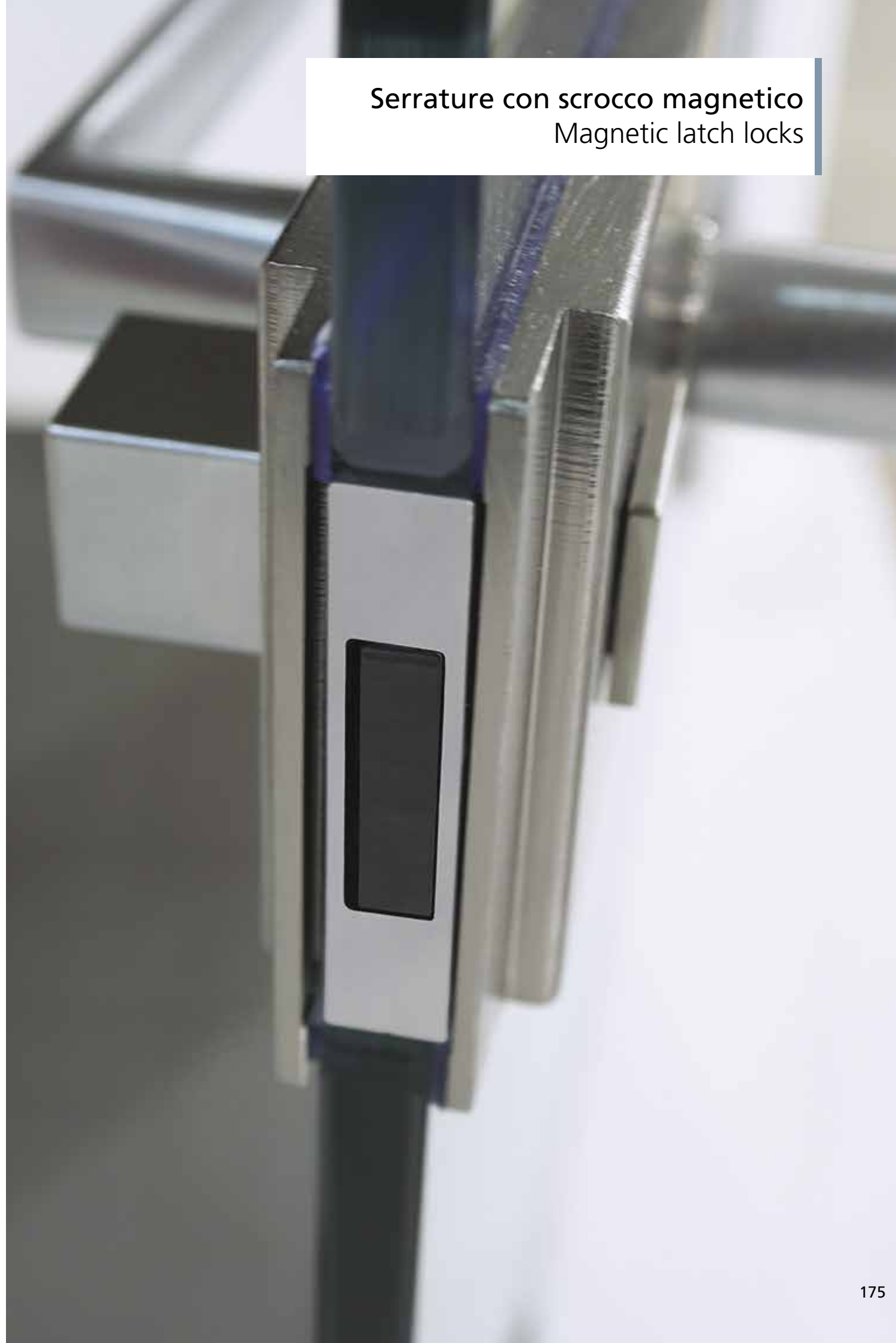
art. 210



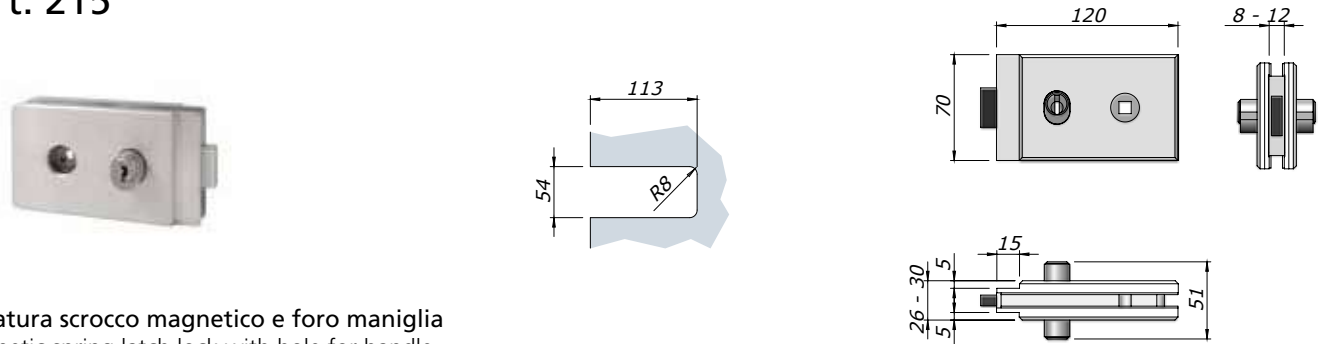
Contro per Art. 209
Lock keeper for Art. 209

argento / silver	bronzo / bronze	oro / gold	nero / black	verniciato / powder	cromato / chrome	oro luc. / bright gold	crom. sat / chro. mat
N-0210-A	N-0210-B	N-0210-O	N-0210-N	N-0210-V	N-0210-C	N-0210-L	N-0210-I

Serrature con scrocco magnetico
Magnetic latch locks



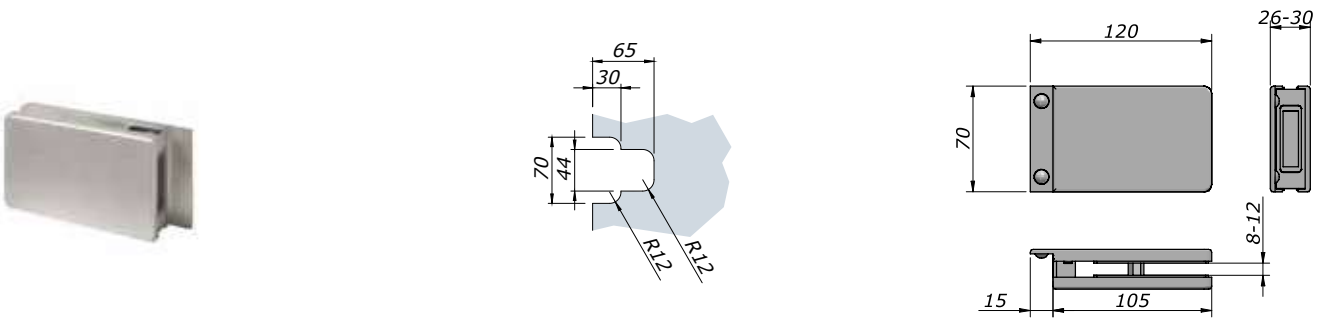
art. 215



Serratura scrocco magnetico e foro maniglia
Magnetic spring latch lock with hole for handle

argento / silver	bronzo / bronze	oro / gold	nero / black	verniciato / powder	cromato / chrome	oro luc. / bright gold	crom. sat / chro. mat
N-0215-A	N-0215-B	N-0215-O	N-0215-N	N-0215-V	N-0215-C	N-0215-L	N-0215-I

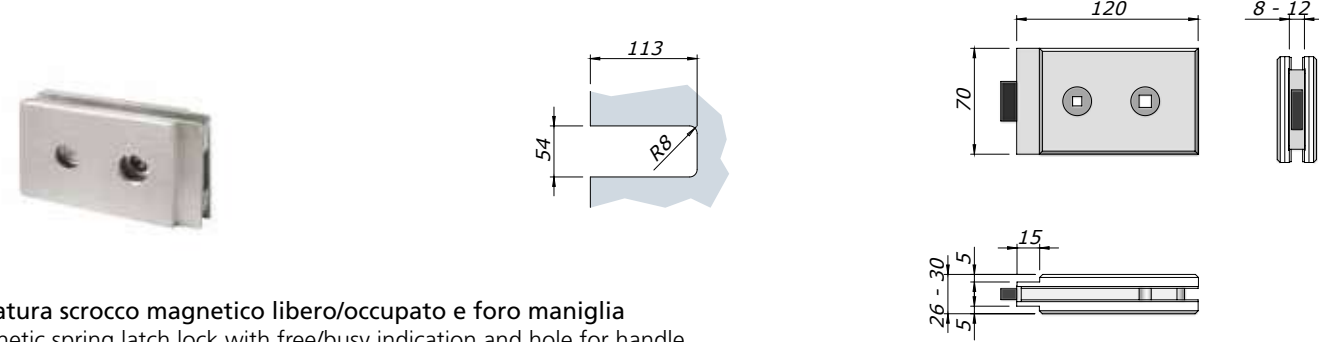
art. 216



Contro per Art. 215/217
Lock keeper for Art. 215/217

argento / silver	bronzo / bronze	oro / gold	nero / black	verniciato / powder	cromato / chrome	oro luc. / bright gold	crom. sat / chro. mat
N-0216-A	N-0216-B	N-0216-O	N-0216-N	N-0216-V	N-0216-C	N-0216-L	N-0216-I

art. 217



Serratura scrocco magnetico libero/occupato e foro maniglia
Magnetic spring latch lock with free/busy indication and hole for handle

argento / silver	bronzo / bronze	oro / gold	nero / black	verniciato / powder	cromato / chrome	oro luc. / bright gold	crom. sat / chro. mat
N-0217-A	N-0217-B	N-0217-O	N-0217-N	N-0217-V	N-0217-C	N-0217-L	N-0217-I

art. 218



Battuta a muro a 90° per Art. 215/217
90° wall strike plate for Art. 215/217

argento / silver	bronzo / bronze	oro / gold	nero / black	verniciato / powder	cromato / chrome	oro luc. / bright gold	crom. sat / chro. mat
N-0218-A	N-0218-B	N-0218-O	N-0218-N	N-0218-V	N-0218-C	N-0218-L	N-0218-I

Maniglie per serrature con scrocco e magnetiche
Handles for latch and magnetic locks



art. 50



Maniglia per serrature con scrocco
Spring latch lock handle

argento / silver	crom. sat / chro. mat	altre finiture / other finishes
N-0050-A	N-0050-I	a richiesta / on demand

art. 52



Bussola per installazione maniglia senza rosetta
Bush for latch lock handle without washer

crom. sat / chro. mat
N-0052-I

art. 54



Maniglia per serrature con scrocco
Spring latch lock handle

argento/silver	cromato/chrome	crom.sat chro.mat	altre finiture/other finishes
N-0054-A	N-0054-C	N-0054-I	a richiesta / on demand

art. 51



Maniglia per serrature con scrocco
Spring latch lock handle

argento / silver	crom. sat / chro. mat	altre finiture / other finishes
N-0051-A	N-0051-I	a richiesta / on demand

art. 53



Maniglia per serrature con scrocco
Spring latch lock handle

argento / silver	cromato / chrome	crom. sat / chro. mat
N-0053-A	N-0053-C	N-0053-I

art. 55



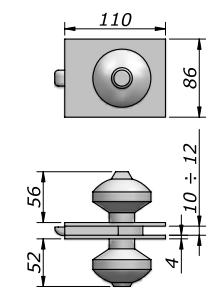
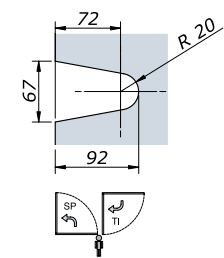
Nottolino per serratura con scrocco
Spring latch lock knob

argento/silver	cromato/chrome	crom.sat chro.mat	altre finiture/other finishes
N-0055-A	N-0055-C	N-0055-I	a richiesta / on demand

Serrature a scrocco con maniglia integrata
Latch locks with handles



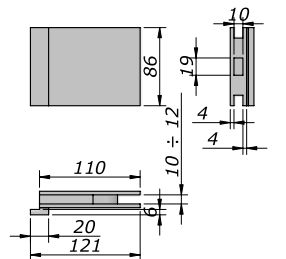
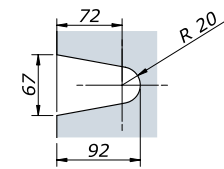
art. 510



Serratura con scrocco e pomoli
Spring latch lock with knobs

	argento/silver	bronzo/bronze	oro/gold	nero/black	verniciato/powder	cromato/chrome	oro luc./bright gold	crom. sat./chro. mat
spingere/push	N-0510-A-SP	N-0510-B-SP	N-0510-O-SP	N-0510-N-SP	N-0510-V-SP	N-0510-C-SP	N- 0510-L-SP	N-0510-I-SP
tirare/pull	N-0510-A-TI	N-0510-B-TI	N-0510-O-TI	N-0510-N-TI	N-0510-V-TI	N-0510-C-TI	N- 0510-L-TI	N-0510-I-TI

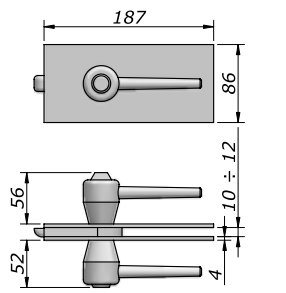
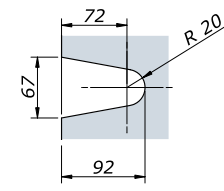
art. 511



Contro per Art. 510
Lock keeper for Art. 510

argento / silver	bronzo / bronze	oro / gold	nero / black	verniciato / powder	cromato / chrome	oro luc. / bright gold	crom. sat / chro. mat
N-0511-A	N-0511-B	N-0511-O	N-0511-N	N-0511-V	N-0511-C	N-0511-L	N-0511-I

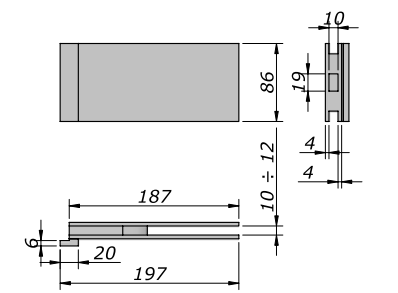
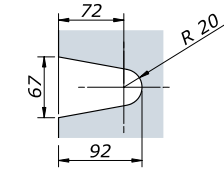
art. 512



Serratura con scrocco e maniglie
Spring latch lock with handles

	argento/silver	bronzo/bronze	oro/gold	nero/black	verniciato/powder	cromato/chrome	oro luc./bright gold	crom. sat./chro. mat
spingere/push	N-0512-A-SP	N-0512-B-SP	N-0512-O-SP	N-0512-N-SP	N-0512-V-SP	N-0512-C-SP	N- 0512-L-SP	N-0512-I-SP
tirare/pull	N-0512-A-TI	N-0512-B-TI	N-0512-O-TI	N-0512-N-TI	N-0512-V-TI	N-0512-C-TI	N- 0512-L-TI	N-0512-I-TI

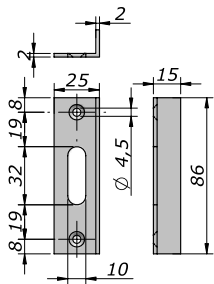
art. 513



Contro per Art. 512
Lock keeper for Art. 512

argento / silver	bronzo / bronze	oro / gold	nero / black	verniciato / powder	cromato / chrome	oro luc. / bright gold	crom. sat / chro. mat
N-0513-A	N-0513-B	N-0513-O	N-0513-N	N-0513-V	N-0513-C	N-0513-L	N-0513-I

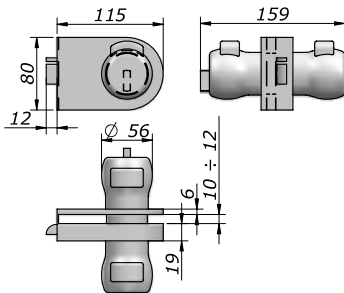
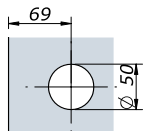
art. 313C



Battuta a 90° per Art. 510/512
90° strike plate for Art. 510/512

argento / silver	bronzo / bronze	oro / gold	nero / black	verniciato / powder	cromato / chrome	oro luc. / bright gold	crom. sat / chro. mat
N-313C-A	N-313C-B	N-313C-O	N-313C-N	N-313C-V	N-313C-C	N-313C-L	N-313C-I

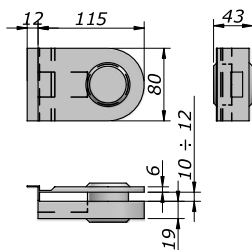
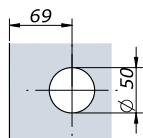
art. 20



Serratura premi apri Meroni
Lock “Premi apri Meroni”

argento / silver	nero / black	cromato / chrome	crom. sat / chro. mat
N-0020-A	N-0020-N	N-0020-C	N-0020-I

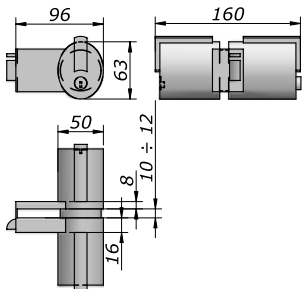
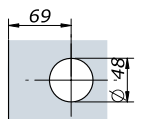
art. 21



Contro per Art. 20
Lock keeper for Art. 20

argento / silver	nero / black	cromato / chrome	crom. sat / chro. mat
N-0021-A	N-0021-N	N-0021-C	N-0021-I

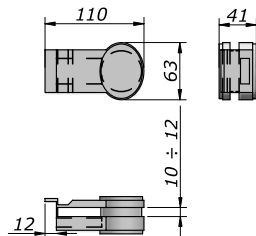
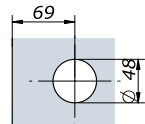
art. 213



Serratura “Forma Meroni”
Lock “Forma Meroni”

argento / silver	nero / black	cromato / chrome	crom. sat / chro. mat
N-0213-A	N-0213-N	N-0213-C	N-0213-I

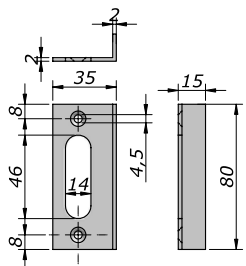
art. 214



Contro per Art. 213
Lock keeper for Art. 213

argento / silver	nero / black	cromato / chrome	crom. sat / chro. mat
N-0214-A	N-0214-N	N-0214-C	N-0214-I

art. 313D



Battuta a 90° per Art. 20 e Art. 213
90° strike plate for Art. 20/213

argento / silver	nero / black	cromato / chrome	crom. sat / chro. mat
N-313D-A	N-313D-N	N-313D-C	N-313D-I

Serrature elettriche
Electric locks



Esempi di composizione e consigli tecnici / Set composition examples and technical informations



Porta singola con
bocchetta elettrica a muro
Single door with wall
electric strike



Porta doppia con bocchetta elettrica
e fisso laterale
Double door with electric strike
and side fixed glass



Porta singola
con serratura elettrica
Single door
with electric lock



Porta doppia con bocchetta elettrica
e fisso laterale
Double door with electric strike
and side fixed glass

#1	#2	#3	#4
No. 01 Art. 280A (dx/sx)	No. 01 Art. 280 (dx/sx) L = Larghezza porta /door width width	No. 01 Art. 270 (dx/sx)	No. 01 Art. 270 (dx/sx) L = Larghezza porta /door width
No. 01 Art. 283	No. 01 Art. 281 L = Larghezza semi fisso/strike door width		No. 01 Art. 271 L = Larghezza semi fisso/strike door width
	No. 01 Art. 282 L = larghezza fisso / fixed glass width		No. 01 Art. 282 L = larghezza fisso / fixed glass width

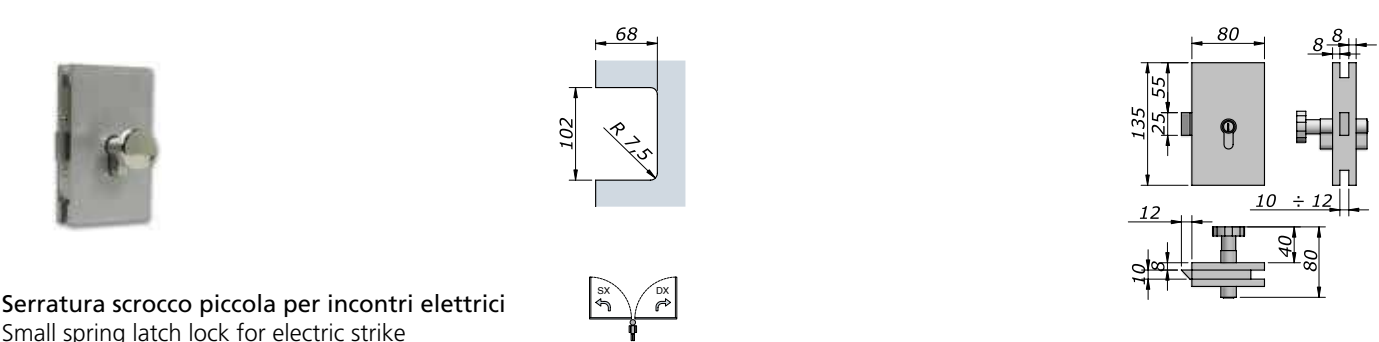
Informazioni tecniche

- Esistono due diverse soluzioni di meccanismi elettrici:
 - > Serrature elettriche dirette (Art. 270)
La parte elettrica è sulla serratura a scrocco, l'incontro è una semplice battuta (alimentazione elettrica dal lato serratura).
 - > Incontro elettrico (Art. 281/281A/283)
La parte elettrica è nell'incontro e occorre l'utilizzo di apposite serrature a scrocco (alimentazione elettrica dal lato incontro).
- È sempre consigliato l'utilizzo di incontri elettrici in quanto il collegamento elettrico, essendo sul fisso o semi fisso, subisce minori sollecitazioni e quindi si ha un minor rischio di malfunzionamento.
- Tutte le serrature e incontri elettrici funzionano con corrente alternata 12 V.
- Gli incontri elettrici forniti prevedono leva di sblocco a giorno e sganciamento permanente dopo l'impulso elettrico (senza antiripetitore).
- Le serrature elettriche fornite prevedono lo sganciamento permanente dopo l'impulso elettrico (senza antiripetitore) e non prevedono lo sblocco a giorno.
- La modalità di apertura (pulsante, codice, carte magnetiche ecc.) è stabilita in base ai dispositivi previsti nell'impianto elettrico ed alle necessità del cliente.
La modalità di apertura scelta non è influente sulla tipologia di meccanismo elettrico.
- Le serrature sono fornite di cilindro con pomolino che permette l'uscita dall'interno senza chiave ed in mancanza di elettricità.

Technical information

- There are two different solutions for electric mechanisms:
 - > Direct electric locks (Art. 270)
The electric part is in the latch lock, the lock keeper is a simple strike (electrical power supply from the lock side).
 - > Electric strikes (Art. 281/281A/283)
The electric part is in the lock keeper. It must be used an appropriate latch lock (electrical power supply from the lock keeper side).
- It is always advised to use electric strikes because being the electric connection on the fixed or semi-fixed glass, it will suffer minor stress and therefore has a lower risk of malfunction.
- All the electric locks and strikes work with alternate current 12 V.
- The electric strike supplied provide dailiy release lever and permanent release upon electrical contact (without anti-repeater).
- The electric locks supplied provide permanent release upon electrical contact (without anti-repeater) and do not provide daily release level.
- The opening mode (button, code, magnetic cards, etc.) is determined by the devices provided in the electrical system and customer demand.
The opening mode choice is not influential on the type of electric mechanism and accessories we supply.
- The locks are supplied with cylinder with knob that allow the exit from inside without key in absence of electricity.

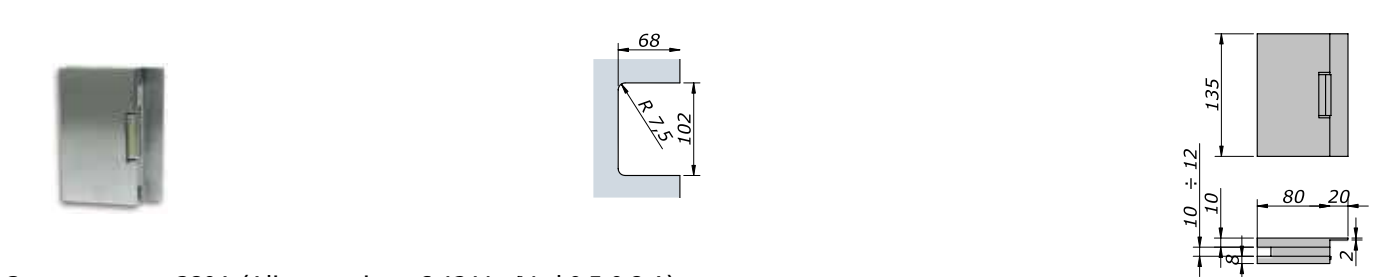
art. 280A



Serratura scrocco piccola per incontri elettrici
Small spring latch lock for electric strike

	argento/silver	bronzo/bronze	oro/gold	nero/black	verniciato/powder	crom./chrome	oro luc./bright gold	crom. sat./chro. mat
destra/right	N-280A-A-DX	N-280A-B-DX	N-280A-O-DX	N-280A-N-DX	N-280A-V-DX	N-280A-C-DX	N-280A-L-DX	N-280A-I-DX
sinistra/left	N-280A-A-SX	N-280A-B-SX	N-280A-O-SX	N-280A-N-SX	N-280A-V-SX	N-280A-C-SX	N-280A-L-SX	N-280A-I-SX

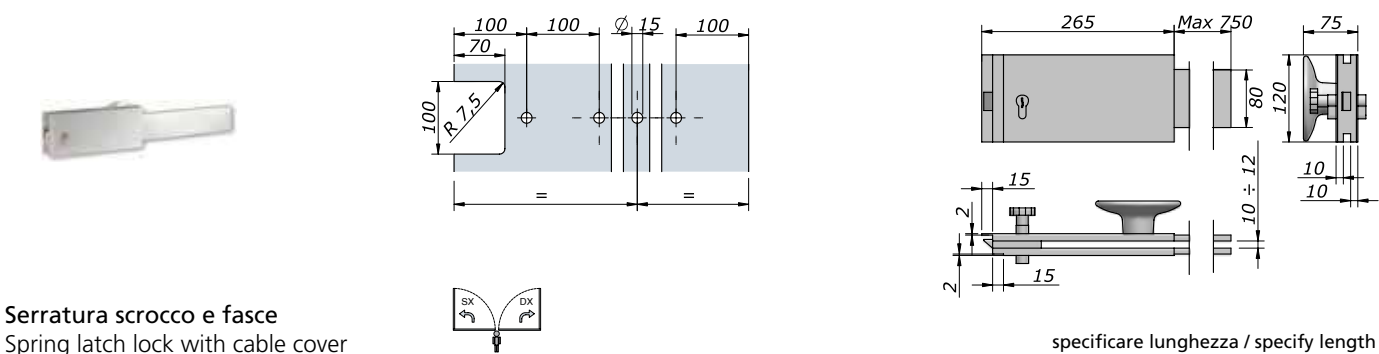
art. 281A



Contro per art. 280A (Alimentazione 6-12 Vac/Vad 0.5-0.8 A)
Electric lock keeper for art. 280A (Power supply 6-12 Vac/Vad 0.5-0.8 A)

argento / silver	bronzo / bronze	oro / gold	nero / black	verniciato / powder	cromato / chrome	oro luc. / bright gold	crom. sat. / chro. mat
N-281A-A	N-281A-B	N-281A-O	N-281A-N	N-281A-V	N-281A-C	N-281A-L	N-281A-I

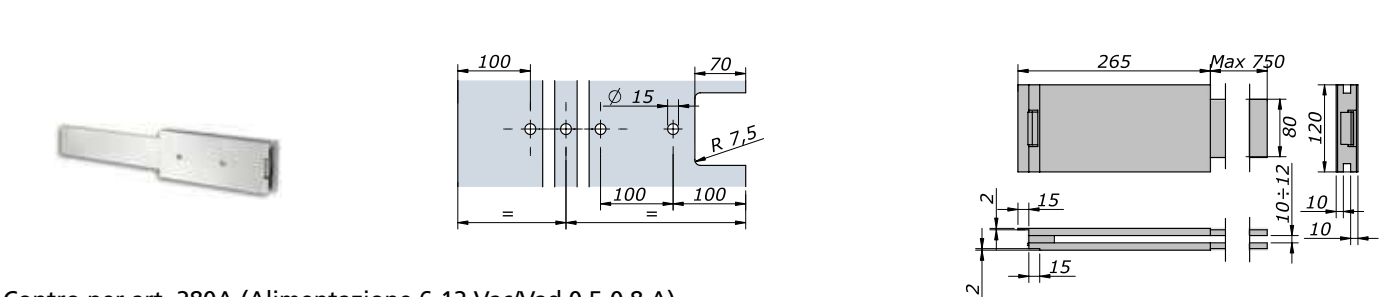
art. 280



Serratura scrocco e fasce
Spring latch lock with cable cover

argento/silver	bronzo/bronze	oro/gold	nero/black	verniciato/powder	crom./chrome	oro luc./bright gold	crom. sat./chro. mat
destra/right	N-0280-A-DX	N-0280-B-DX	N-0280-O-DX	N-0280-N-DX	N-0280-V-DX	N-0280-C-DX	N-0280-L-DX
sinistra/left	N-0280-A-SX	N-0280-B-SX	N-0280-O-SX	N-0280-N-SX	N-0280-V-SX	N-0280-C-SX	N-0280-L-SX

art. 281



Contro per art. 280A (Alimentazione 6-12 Vac/Vad 0.5-0.8 A)
Electric lock keeper for art. 280A (Power supply 6-12 Vac/Vad 0.5-0.8)

argento / silver	bronzo / bronze	oro / gold	nero / black	verniciato / powder	cromato / chrome	oro luc. / bright gold	crom. sat. / chro. mat
N-0281-A	N-0281-B	N-0281-O	N-0281-N	N-0281-V	N-0281-C	N-0281-L	N-0281-I

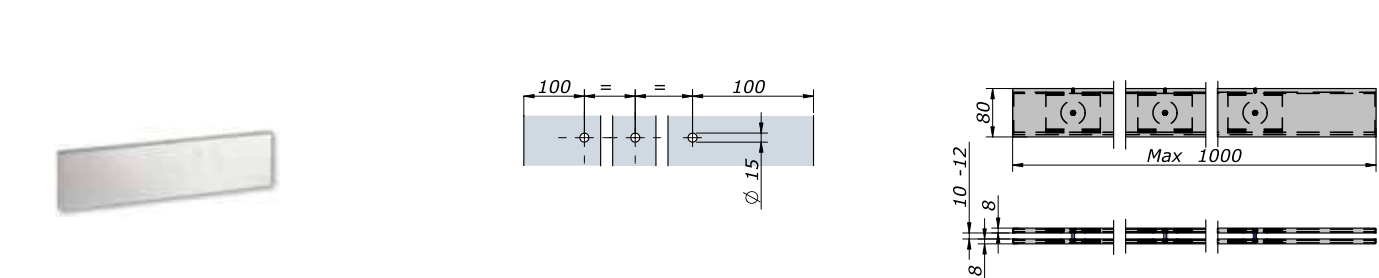
art. 283



Bocchetta elettrica a muro con battuta (Alimentazione 6-12 Vac/Vad 0.5-0.8 A)
Electric strike with stop (Power supply 6-12 Vac/Vad 0.5-0.8 A)

argento / silver	bronzo / bronze	oro / gold	nero / black	verniciato / powder	cromato / chrome	oro luc. / bright gold	crom. sat. / chro. mat
N-0283-A	N-0283-B	N-0283-O	N-0283-N	N-0283-V	N-0283-C	N-0283-L	N-0283-I

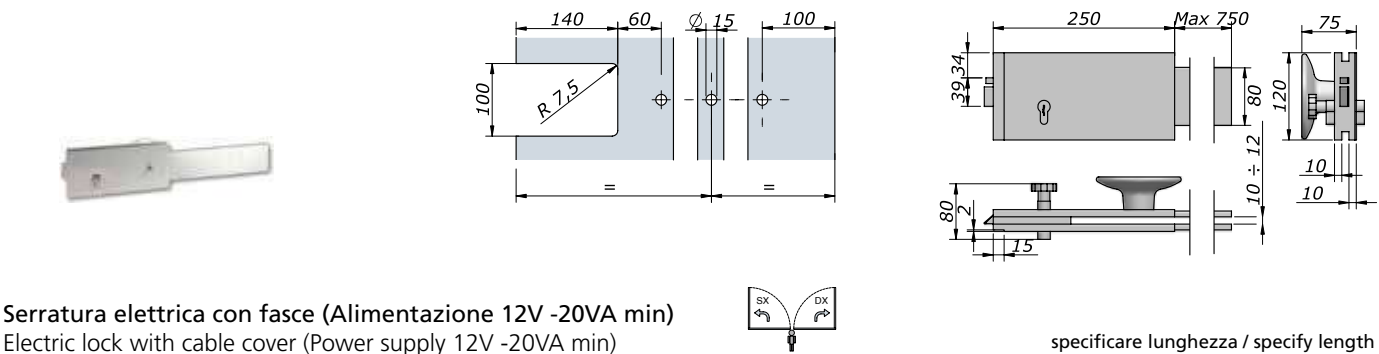
art. 282



Fasce fisse per serrature elettriche
Cable cover for electric lock

argento / silver	bronzo / bronze	oro / gold	nero / black	verniciato / powder	cromato / chrome	oro luc. / bright gold	crom. sat. / chro. mat
N-0282-A	N-0282-B	N-0282-O	N-0282-N	N-0282-V	N-0282-C	N-0282-L	N-0282-I

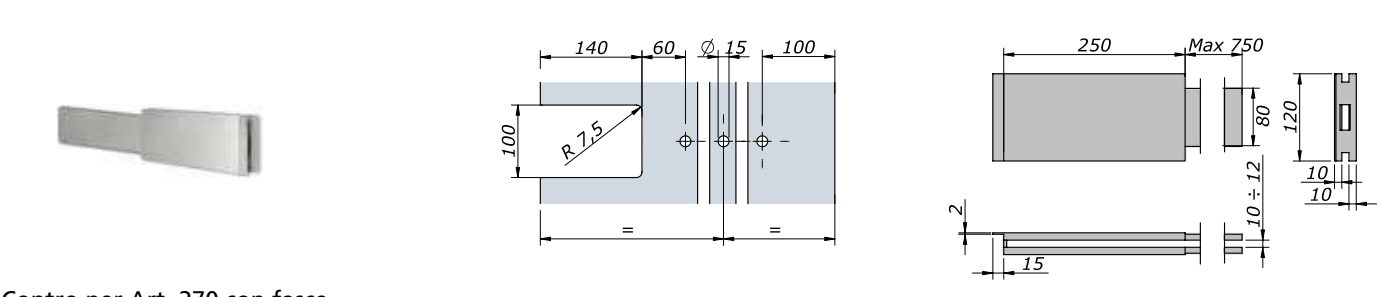
art. 270



Serratura elettrica con fasce (Alimentazione 12V -20VA min)
Electric lock with cable cover (Power supply 12V -20VA min)

argento/silver	bronzo/bronze	oro/gold	nero/black	verniciato/powder	crom./chrome	oro luc./bright gold	crom. sat./chro. mat
destra/right	N-0270-A-DX	N-0270-B-DX	N-0270-O-DX	N-0270-N-DX	N-0270-V-DX	N-0270-C-DX	N-0270-L-DX
sinistra/left	N-0270-A-SX	N-0270-B-SX	N-0270-O-SX	N-0270-N-SX	N-0270-V-SX	N-0270-C-SX	N-0270-L-SX

art. 271



Contro per Art. 270 con fasce
Lock keeper for Art. 270 with cable cover

argento / silver	bronzo / bronze	oro / gold	nero / black	verniciato / powder	cromato / chrome	oro luc. / bright gold	crom. sat. / chro. mat
N-0271-A	N-0271-B	N-0271-O	N-0271-N	N-0271-V	N-0271-C	N-0271-L	N-0271-I

Antipanico Panic Device



Antipanico

- Nelle porte doppie è sconsigliato l'utilizzo di maniglioni antipanico orizzontali salvo se con incontro elettrico.
- Non è possibile utilizzare bocchette o incontri elettrici con maniglioni antipanico verticali.

Panic Device

- It is suggested not to use horizontal panic device in double doors, unless with electric catch.
- It's not possible to use electric catch with vertical panic device.

Esempi di composizione e consigli tecnici / Set composition examples and technical informations

Antipanico orizzontale standard Standard horizontal panic device

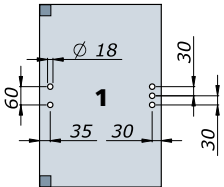


SENZA maniglia esterna
WITHOUT external handle

#1	#2	Lavorazioni sul vetro / Glass cut out
No. 01 Art. 800-ST	No. 01 Art. 800-MA	
	No. 01 Art. 802	



CON maniglia esterna
WITH external handle



Antipanico orizzontale standard con bocchetta elettrica a muro Horizontal standard panic device with wall electric strike

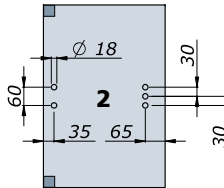


SENZA maniglia esterna
WITHOUT external handle

#3	#4	Lavorazioni sul vetro / Glass cut out
No. 01 Art. 800-ST	No. 01 Art. 800-MA	
No. 01 Art. 803	No. 01 Art. 802	
	No. 01 Art. 803	



CON maniglia esterna
WITH external handle



Antipanico orizzontale standard con contro a vetro Horizontal standard panic device with glass strike

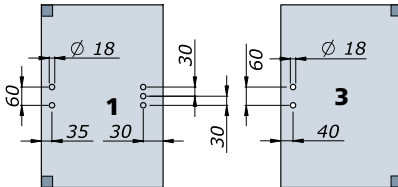


SENZA maniglia esterna
WITHOUT external handle

#5	#6	Lavorazioni sul vetro / Glass cut out
No. 01 Art. 800-ST	No. 01 Art. 800-MA	
No. 01 Art. 806 dx/sx	No. 01 Art. 802	
	No. 01 Art. 806 dx/sx	



CON maniglia esterna
WITH external handle



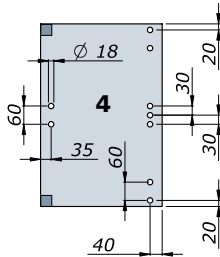
Antipanico verticale standard
Vertical standard panic device



SENZA maniglia esterna
WITHOUT external handle



CON maniglia esterna
WITH external handle



#7	#8	Lavorazioni sul vetro / Glass cut out
No. 01 Art. 801-ST	No. 01 Art. 801-MA	
	No. 01 Art. 802	

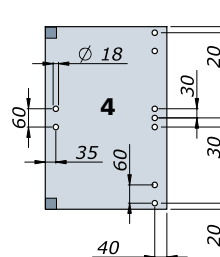
Antipanico verticale standard per doppia porta
Vertical standard panic device for double door



SENZA maniglia esterna
WITHOUT external handle

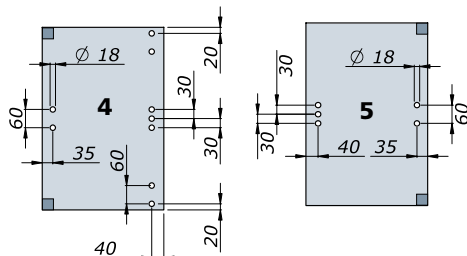


CON maniglia esterna
WITH external handle



#9	#10	Lavorazioni sul vetro / Glass cut out
No. 02 Art. 801-ST	No. 01 Art. 801-MA	
	No. 01 Art. 802	
	No. 01 Art. 801-ST	

Antipanico per porta doppia con bocchetta elettrica e maniglia esterna
Panic device for double door with electric strike and external handle



#11	Lavorazioni sul vetro / Glass cut out
No. 01 Art. 800-MA	
No. 01 Art. 802	
No. 01 Art. 801-BE (dx/sx)	
No. 01 Art. 803A	

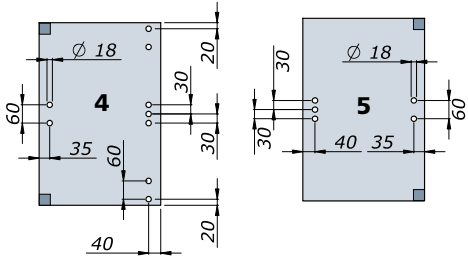
Antipanico per porta doppia orizzontale + verticale
Horizontal + Vertical panic device for double door



SENZA maniglia esterna
WITHOUT external handle



CON maniglia esterna
WITH external handle



#12	#13	Lavorazioni sul vetro / Glass cut out
No. 01 Art. 800-ST	No. 01 Art. 800-MA	
No. 01 Art. 801-CV (dx/sx)	No. 01 Art. 802	
	No. 01 Art. 801-CV (dx/sx)	

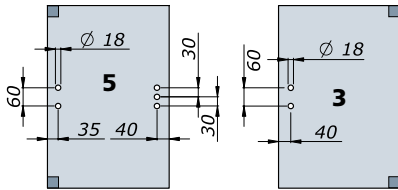
Antipanico orizzontale standard con bocchetta elettrica a vetro
Horizontal standard panic device with glass electric strike



SENZA maniglia esterna
WITHOUT external handle

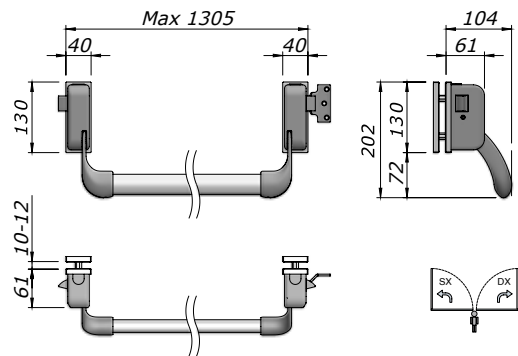


CON maniglia esterna
WITH external handle



#14	#15	Lavorazioni sul vetro / Glass cut out
No. 01 Art. 800-ST	No. 01 Art. 800-MA	
No. 01 Art. 805	No. 01 Art. 802	
	No. 01 Art. 805	

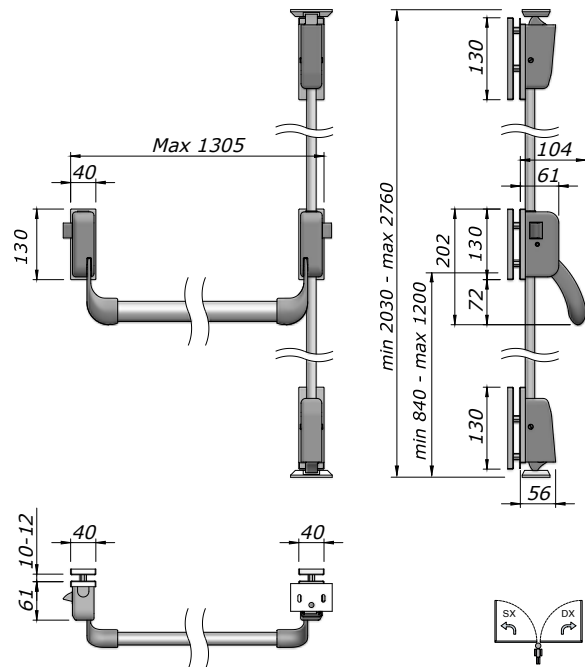
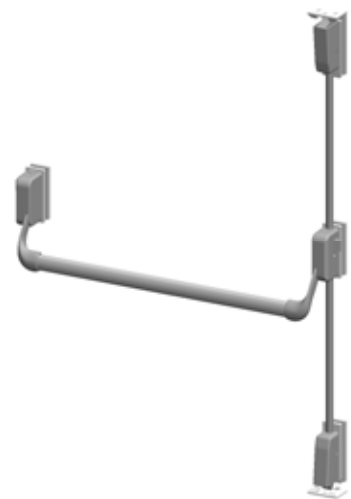
art. 800



Antipanico orizzontale
Horizontal panic device

	argento / silver	cromo / chrome	cromato satinato / chrome mat
ST piastre fissaggio standard / standard fixing plates	N-0800-A-ST	N-0800-C-ST	N-0800-I-ST
MA piastre per maniglia / fixing plates for handle	N-0800-A-MA	N-0800-C-MA	N-0800-I-MA

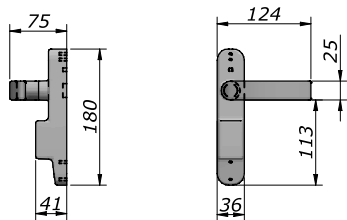
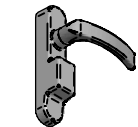
art. 801



Antipanico verticale
Vertical panic device

	argento / silver	cromo / chrome	cromato satinato / chrome mat
ST piastre fissaggio standard / standard fixing plates	N-0801-A-ST	N-0801-C-ST	N-0801-I-ST
MA piastre per maniglia / fixing plates for handle	N-0801-A-MA	N-0801-C-MA	N-0801-I-MA
BE piastre per bocchetta elettrica destro/sinistro fixing plates for electric strike right/left	N-0801-A-BE-DX/SX	N-0801-C-BE-DX/SX	N-0801-I-BE-DX/SX
CV piastre per contro a vetro destro/sinistro fixing plates for glass strike right/left	N-0801-A-CV-DX/SX	N-0801-C-CV-DX/SX	N-0801-I-CV-DX/SX

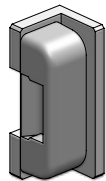
art. 802



Maniglia esterna
External handle

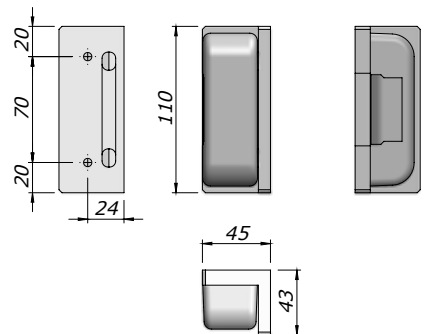
argento / silver	cromo / chrome	cromato satinato / chrome mat
N-0802-A	N-0802-C	N-0802-I

art. 803

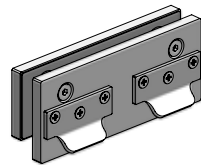


Bocchetta elettrica a muro
Wall electric strike

	argento / silver	cromo / chrome	cromato satinato / chrome mat
Incluso angolare di fissaggio / with corner fixing plate	N-0803-A	N-0803-C	N-0803-I
Solo bocchetta elettrica / Electric Strike only	N-803A-A	N-803A-C	N-803A-I

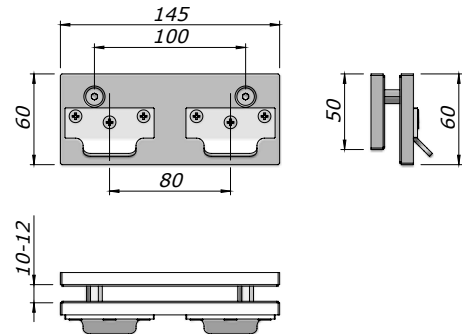


art. 804



Piastra per aggancio a sopraluce
Over panel strike plate

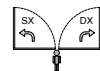
tutto argento / silver	cromo / chrome	cromato satinato / chrome mat
N-0804-A	N-0804-C	N-0804-I



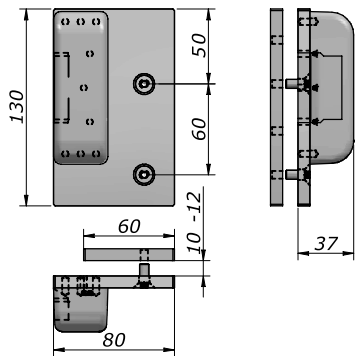
art. 805



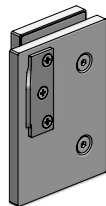
Contro elettrico a vetro
Glass electric strike



	argento / silver	cromo / chrome	cromato satinato / chrome mat
Destro / Right	N-0805-A-DX	N-0805-C-DX	N-0805-I-DX
Sinistro / Left	N-0805-A-SX	N-0805-C-SX	N-0805-I-SX



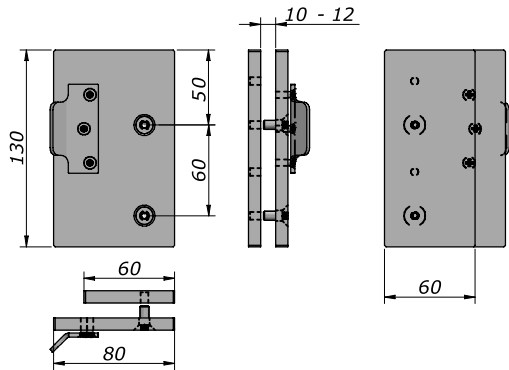
art. 806



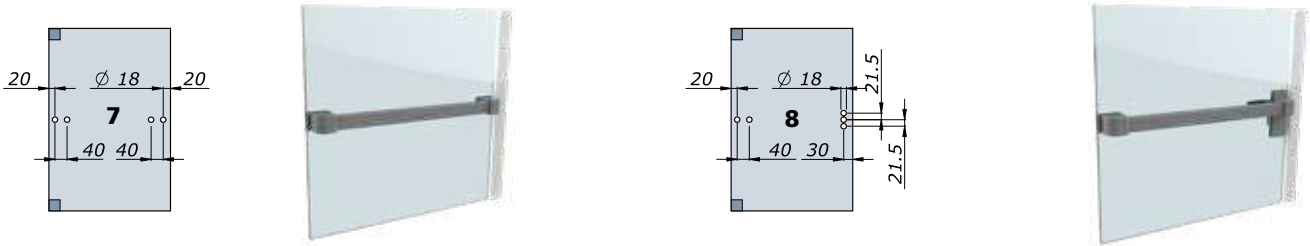
Conto a vetro per art. 800
Glass strike for art. 800



	argento / silver	cromo / chrome	cromato satinato / chrome mat
Destro / Right	N-0806-A-DX	N-0806-C-DX	N-0806-I-DX
Sinistro / Left	N-0806-A-SX	N-0806-C-SX	N-0806-I-SX



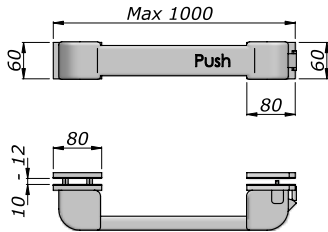
Antipanico orizzontale standard
Horizontal standard panic device



SENZA maniglia esterna
WITHOUT external handle

#1	#2
No. 01 Art. 810-ST	No. 01 Art. 810-MA
	No. 01 Art. 812

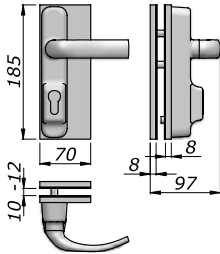
art. 810



Antipantico orizzontale Push-bar
Push-bar horizontal panic device

	tutto argento / silver	cromato satinato / chrome mat
ST piastre fissaggio standard / standard fixing plates	N-0810-A-ST	N-0810-I-ST
MA piastre per maniglia / fixing plates for handle	N-0810-A-MA	N-0810-I-MA

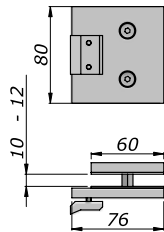
art. 812



Maniglia esterna per Art. 810
External handle for Art. 810

argento / silver	cromato satinato / chrome mat
N-0812-A	N-0812-I

art. 816



Contro a vetro per art. 810
Glass strike for art. 810

argento / silver	cromato satinato / chrome mat
N-0816-A	N-0816-I

Catenacci e guarnizioni
Dead bolt and gaskets

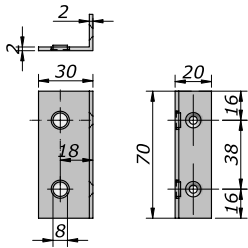


art. 313F



Battuta a 90° fermaporta
90° Door stop

argento / silver	bronzo / bronze	oro / gold	nero / black	verniciato / powder	cromato / chrome	oro luc. / bright gold	crom. sat / chro. mat
N-313F-A	N-313F-B	N-313F-O	N-313F-N	N-313F-V	N-313F-C	N-313F-L	N-313F-I

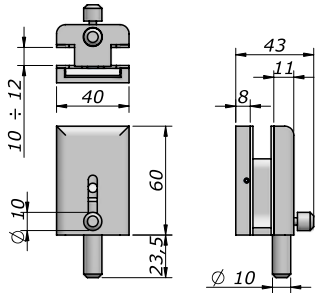
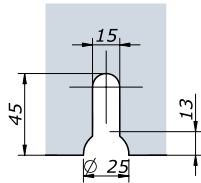


art. 290



Catenaccio
Small bolt

argento / silver	bronzo / bronze	oro / gold	nero / black	verniciato / powder	cromato / chrome	oro luc. / bright gold	crom. sat / chro. mat
N-0290-A	N-0290-B	N-0290-O	N-0290-N	N-0290-V	N-0290-C	N-0290-L	N-0290-I

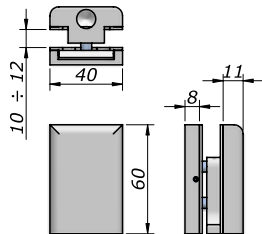
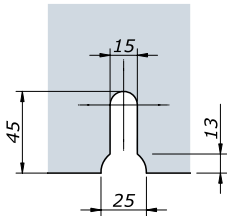


art. 291



Contro per Art. 290
Lock keeper for Art. 290

argento / silver	bronzo / bronze	oro / gold	nero / black	verniciato / powder	cromato / chrome	oro luc. / bright gold	crom. sat / chro. mat
N-0291-A	N-0291-B	N-0291-O	N-0291-N	N-0291-V	N-0291-C	N-0291-L	N-0291-I

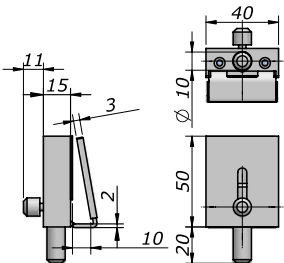


art. 292



Catenaccio a pressione
Small bolt without cut out

argento / silver	bronzo / bronze	oro / gold	nero / black	verniciato / powder	cromato / chrome	oro luc. / bright gold	crom. sat / chro. mat
N-0292-A	N-0292-B	N-0292-O	N-0292-N	N-0292-V	N-0292-C	N-0292-L	N-0292-I

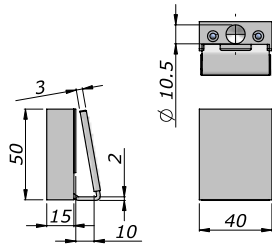


art. 293



Contro per Art. 292
Lock keeper for Art. 292

argento / silver	bronzo / bronze	oro / gold	nero / black	verniciato / powder	cromato / chrome	oro luc. / bright gold	crom. sat / chro. mat
N-0293-A	N-0293-B	N-0293-O	N-0293-N	N-0293-V	N-0293-C	N-0293-L	N-0293-I

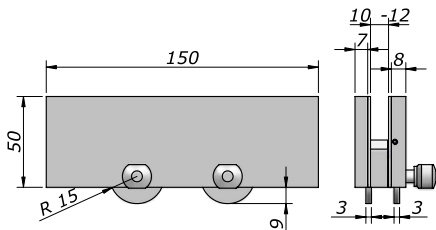
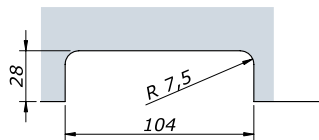


art. 321

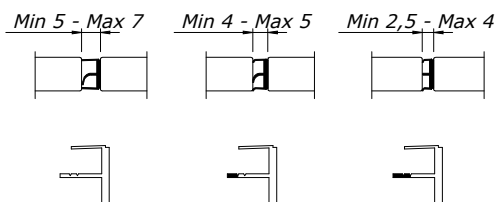


Battuta centrale
Over panel central patch with stop

argento / silver	bronzo / bronze	oro / gold	nero / black	verniciato / powder	cromato / chrome	oro luc. / bright gold	crom. sat / chro. mat
N-0321-A	N-0321-B	N-0321-O	N-0321-N	N-0321-V	N-0321-C	N-0321-L	N-0321-I



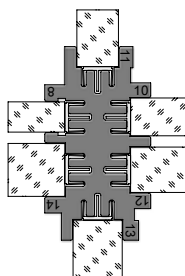
art. 335 glass lip



Guarnizione perimetrale per porte L. 3000 mm
Perimetric seal profile for doors length 3000 mm

contenuto confezione/kit content	
N-0335-T	singolo pezzo / single piece
N-0335-T-KIT	No. 10 Art. 335 (Glass Lip) + No. 2 Art. 335A (Glass Lip Acc) + No. 2 Art. 335B (Glass Lip Clean)

art. 335A glass lip acc



Dima per installazione Glass Lip
Template for Glass Lip installation

N-335A-T

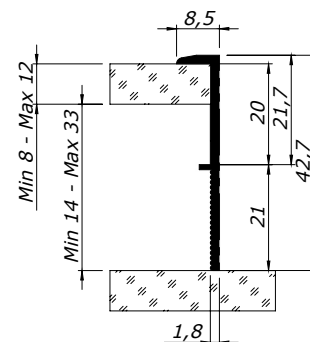
art. 335B glass lip clean



Salviettina sgrassante
Cleaning wipe

N-335B-T

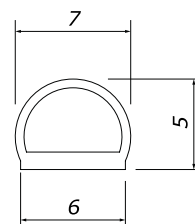
art. 336



Guarnizione per porte scorrevoli L. 3000 mm
Sliding doors seal profile length 3000

contenuto confezione/kit content	
N-0336-T	singolo pezzo / single piece
N-0336-T-KIT	No. 5 Art. 336 (Glass Lip Slide)

art. 755



Guarnizione palloncino adesiva
Self adhesive ball gasket

contenuto confezione/kit content	
N-0755-T	singolo pezzo lungh. 3000 mm / single piece length 3000 mm
N-0755-T-KIT	lungh. 12 m / length 12 m